

Appendix 1.0

Development Plans

FAITH BIBLE CHURCH

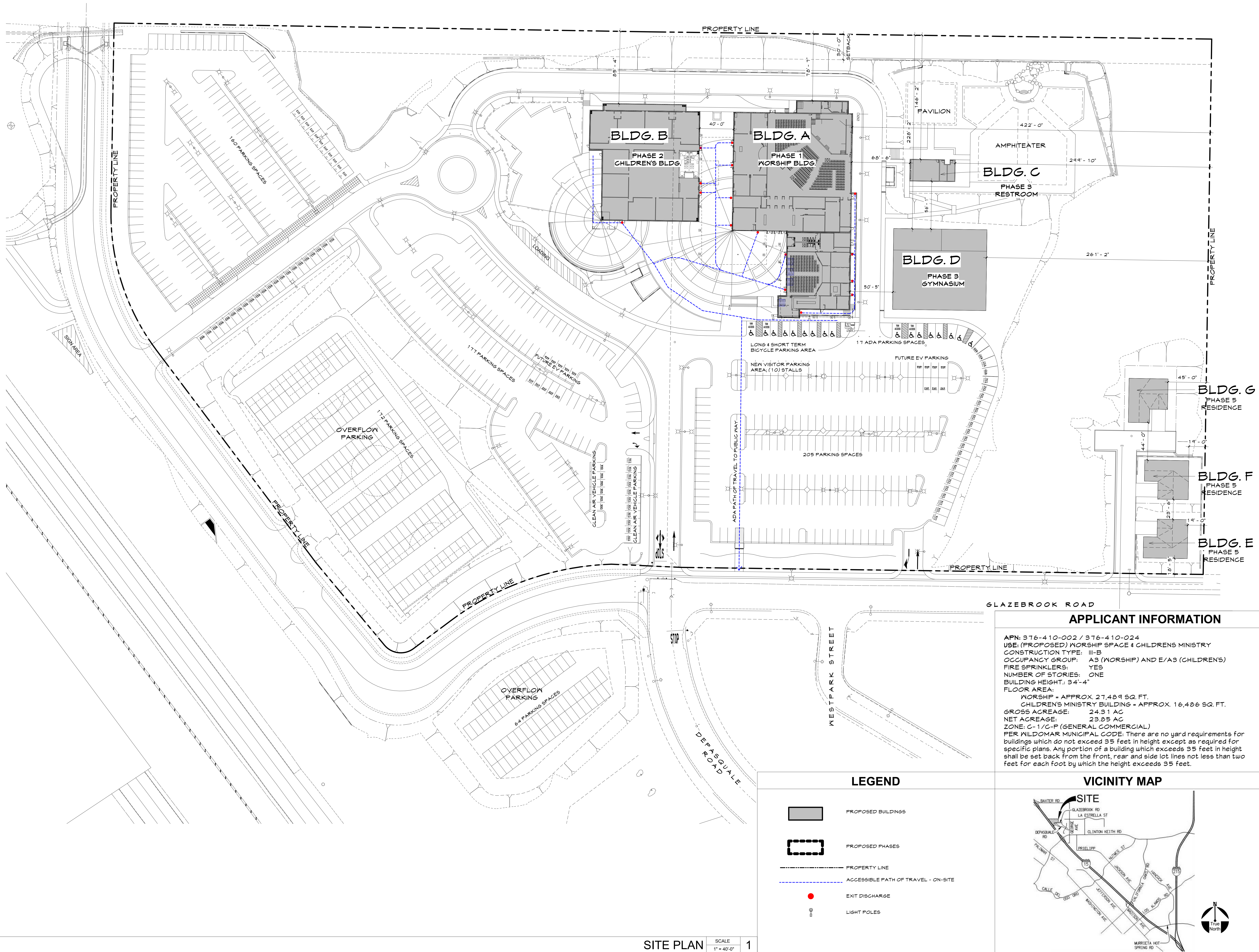
PROPOSED WORSHIP BUILDING AND SITE IMPROVEMENTS

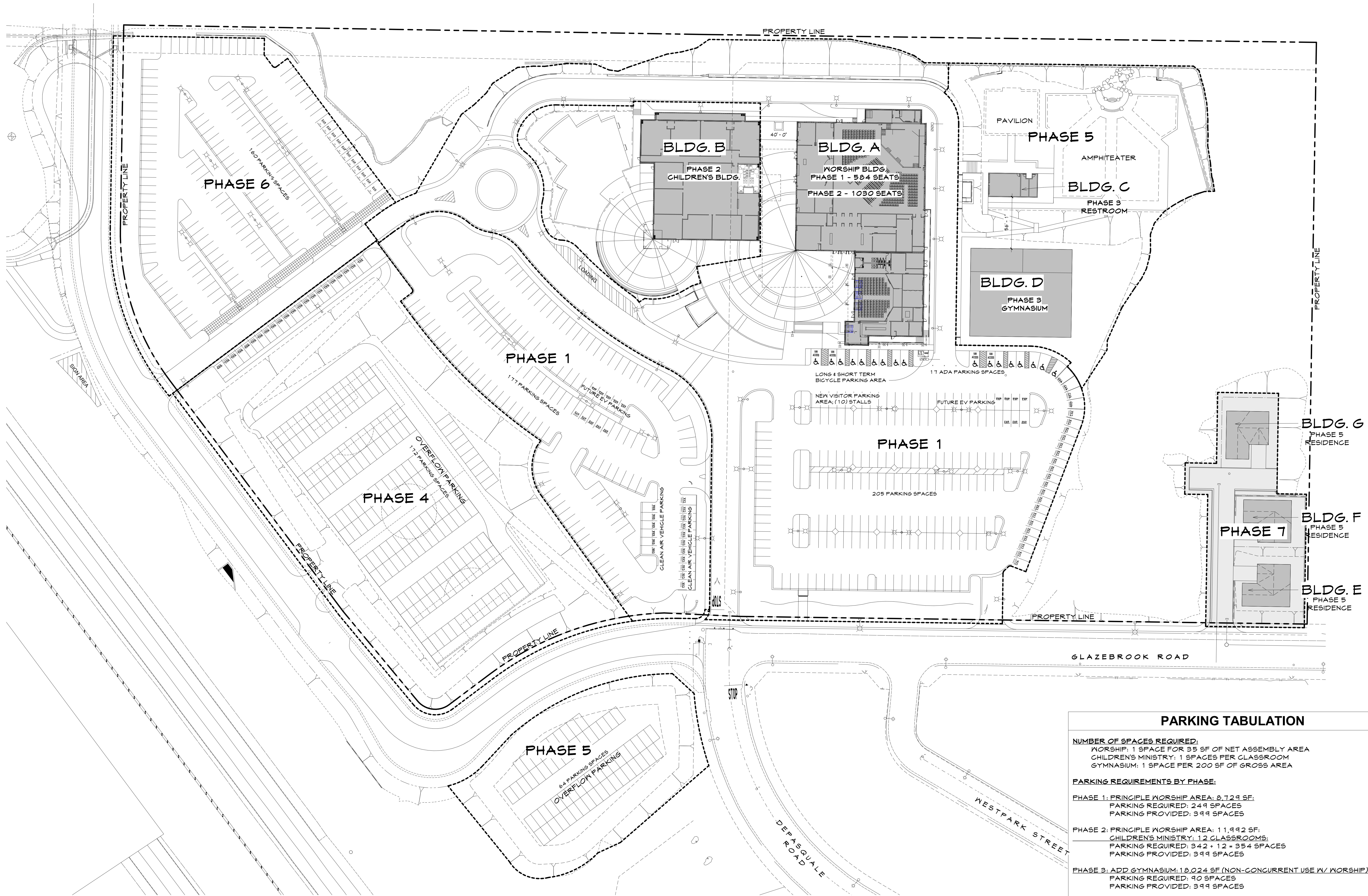
Wildomar, CA 92595



PLOT PLAN

01/23/2019



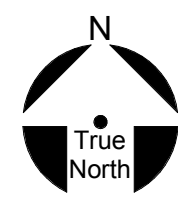
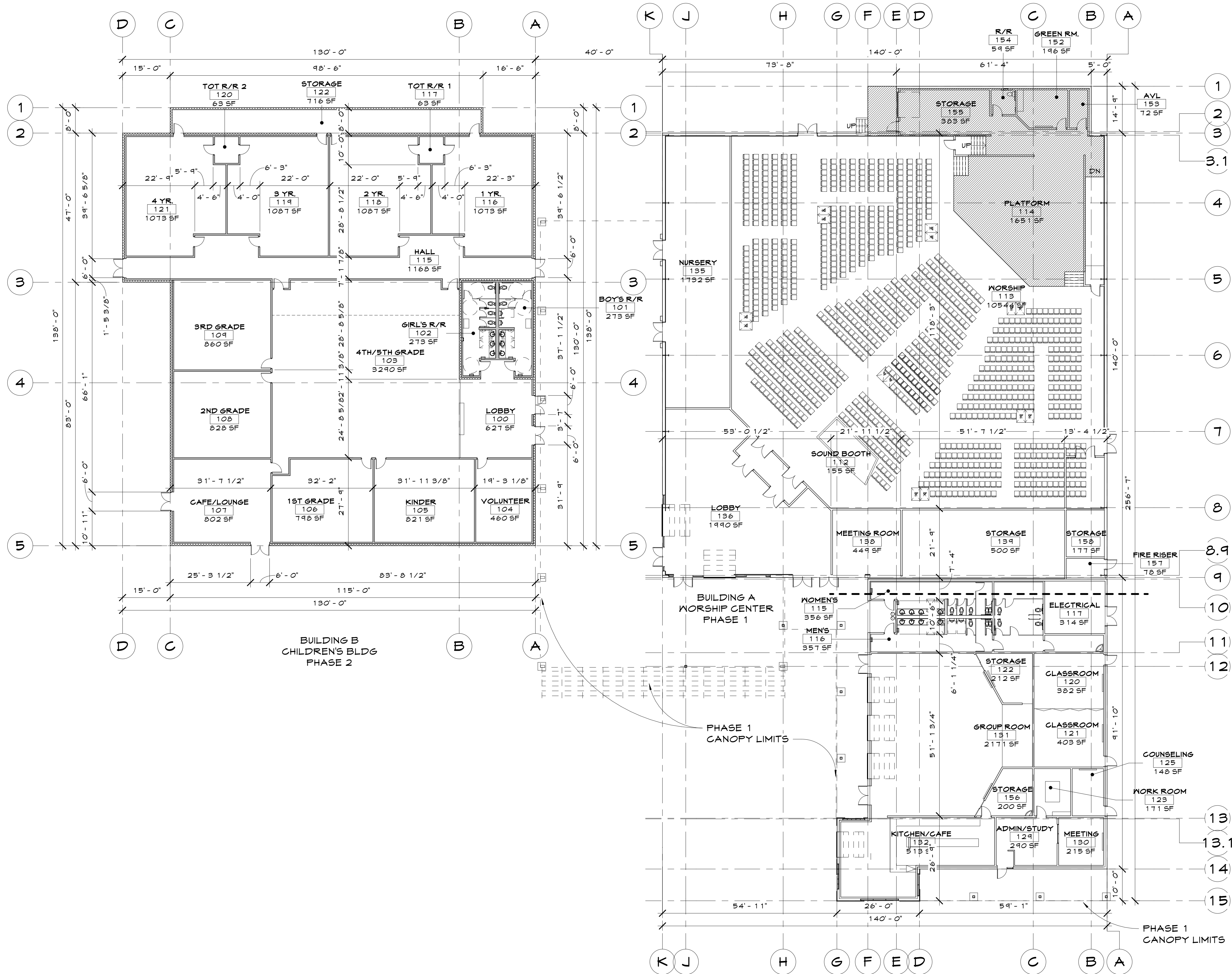


PARKING TABULATION	
NUMBER OF SPACES REQUIRED:	
WORSHIP: 1 SPACE FOR 35 SF OF NET ASSEMBLY AREA	
CHILDREN'S MINISTRY: 1 SPACES PER CLASSROOM	
GYMNASIUM: 1 SPACE PER 200 SF OF GROSS AREA	
PARKING REQUIREMENTS BY PHASE:	
PHASE 1: PRINCIPLE WORSHIP AREA: 8,729 SF;	
PARKING REQUIRED: 249 SPACES	
PARKING PROVIDED: 399 SPACES	
PHASE 2: PRINCIPLE WORSHIP AREA: 11,992 SF;	
CHILDREN'S MINISTRY: 12 CLASSROOMS;	
PARKING REQUIRED: 342 + 12 = 354 SPACES	
PARKING PROVIDED: 399 SPACES	
PHASE 3: ADD GYMNASIUM: 18,024 SF (NON-CONCURRENT USE W/ WORSHIP)	
PARKING REQUIRED: 90 SPACES	
PARKING PROVIDED: 399 SPACES	
PHASE 4: ADD PLAY FIELD OVERFLOW - NO IMPACT	
PARKING REQUIRED: 383 SPACES	
PARKING PROVIDED: 571 SPACES	
PHASE 5: ADD AMPHITHEATER (NON-CONCURRENT USE W/ WORSHIP)	
PARKING REQUIRED: 383 SPACES	
PARKING PROVIDED: 571 SPACES	
PHASE 6: ADD UPPER WEST PARKING - NO IMPACT	
PARKING REQUIRED: 383 SPACES	
PARKING PROVIDED: 731 SPACES	
PHASE 7: ADD RESIDENCES & OVERFLOW PARKING - NO IMPACT	
PARKING REQUIRED: 383 SPACES	
PARKING PROVIDED: 795 SPACES	

SITE PHASING PLAN

SCALE
1" = 40'-0"

1



OVERALL FLOOR PLAN - FULL BUILDOUT

SCALE
1/16" = 1'-0"

1

PROJECT SUMMARY

APN: 976-410-002 & 976-410-024
ZONE: C-1/G-P
SITE AREA: 24.31 ACRES
A-B WORSHIP CENTER & A-B/E CHILDREN'S MINISTRY BUILDING
CONSTRUCTION TYPE- TYPE II-B FULLY SPRINKLERED
TOTAL PROPOSED AREA FOR WORSHIP - APPROX. 27,489 SQ. FT.
TOTAL PROPOSED AREA FOR CHILDREN'S MINISTRY BUILDING - APPROX. 16,486 SQ. FT.

SEATING SCHEDULE

PHASE 1	
TYPE	COUNT
NON-FIXED	577
ADA	7
TOTAL: 584	

PHASE 2	
TYPE	COUNT
NON-FIXED	1018
ADA	12
TOTAL: 1030	

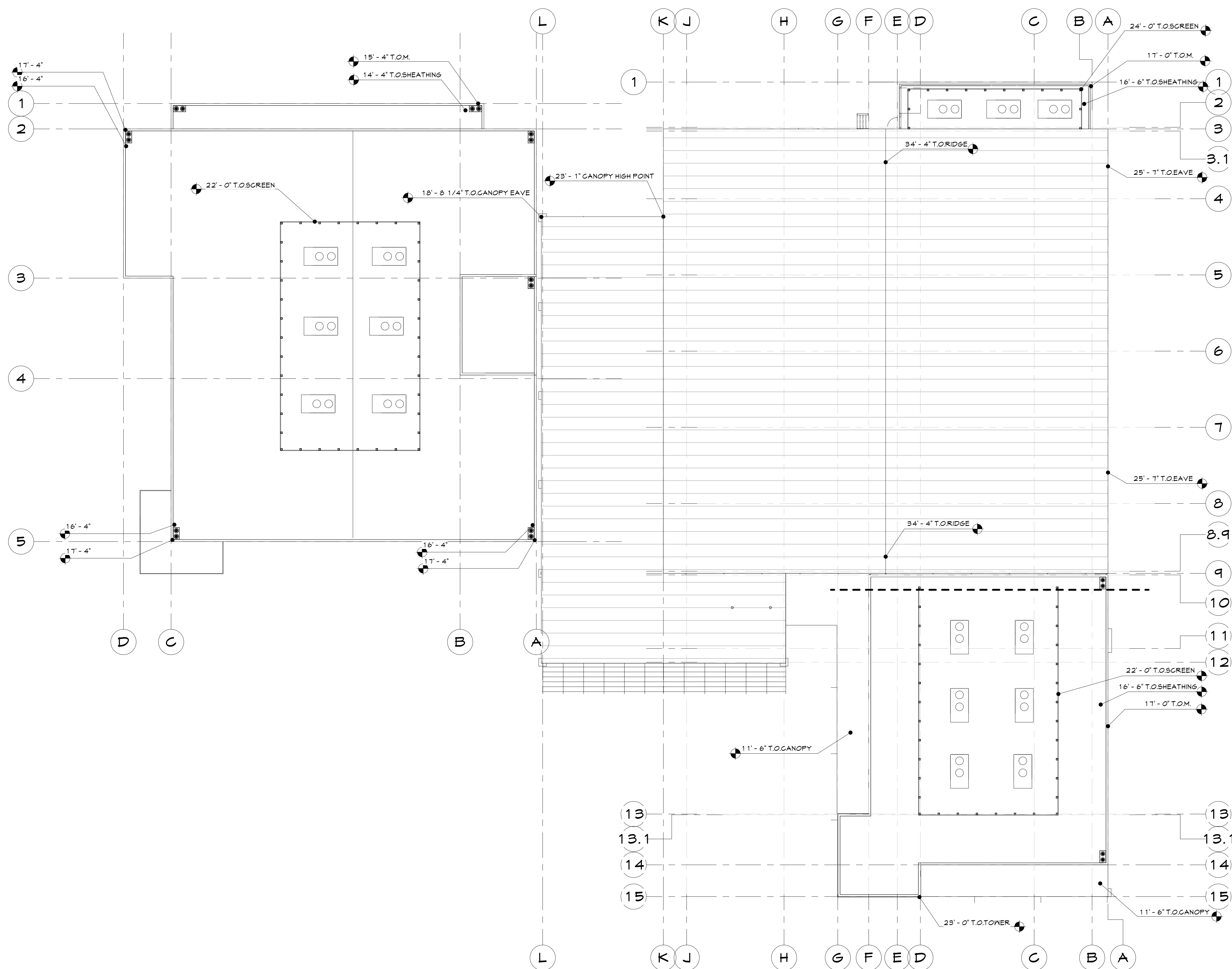
FAITH BIBLE CHURCH

Wildomar, CA 92595

FLOOR PLAN
3.

DATE
01/23/2019
PROJECT
CODE
18630

PLOT PLAN





ROOF PLAN


SCALE
1/16" = 1'-0"


1


LEGEND

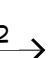

 TYP. ROOF DRAIN - REFER TO PLUMBING DRAWINGS

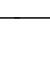

 "CLASS A" 60 MIL THK. SINGLE-PLY ROOF
MEMBRANE ADHESIVE APPLIED OV. CONCRETE
SLAB OV. STRUCTURE



 SPOT ELEVATION HEIGHT

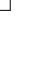

 "CLASS A" 1" 6" PANEL, STANDING SEAM METAL
ROOF.
KYMAR 500 - COLOR AS SEL


 CRICKET - TAPERED RIGID INSULATION, ADHESIVE
APPLIED OV. CONCRETE ROOF TOP DECK


 ROOF SLOPE MINIMUM


 OUTSIDE AIR CONDITIONER UNIT


 DOWNSPOUT


 RESTROOM VENTS

ABBREVIATIONS:
B.O.M.D. BOTTOM OF METAL DECK
T.O. TOP OF
T.O.B. TOP OF BEAM
T.O.C.C. TOP OF CONCRETE CURB
T.O.C.S. TOP OF CONCRETE SLAB
T.O.C.P. TOP OF CONCRETE PAVEMENT
T.O.F.D. TOP OF FLOOR DRAIN
T.O.F.S. TOP OF COMPOSITE FINISHED SURFACE
T.O.G.R. TOP OF GUARD RAIL
T.O.L.W. TOP OF LOW WALL
T.O.P. TOP OF PARAPET
T.O.S.S. TOP OF STRUCTURAL SLAB
T.O.T.S. TOP OF TOPPING SLAB

Wildomar, CA 92595

PLOT PLAN

DATE
01/23/2019

PROJECT
CODE
18630

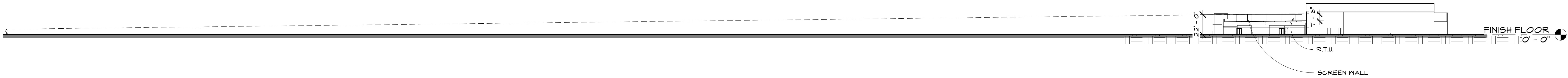
FAITH BIBLE CHURCH

ROOF PLAN

Sheet No.

4.

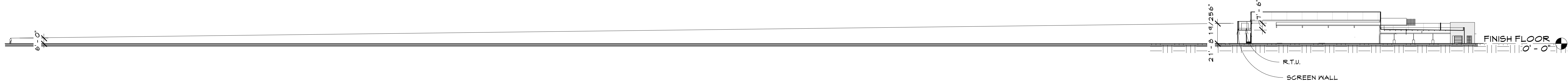
1/23/2019 11:30:03 AM C:\Users\llores\Documents\Wildomar - FBC_Worship_Center_Central_llores@visioneeringstudios.com.rvt



EAST SIGHT LINE STUDY

SCALE
1" = 50'-0"

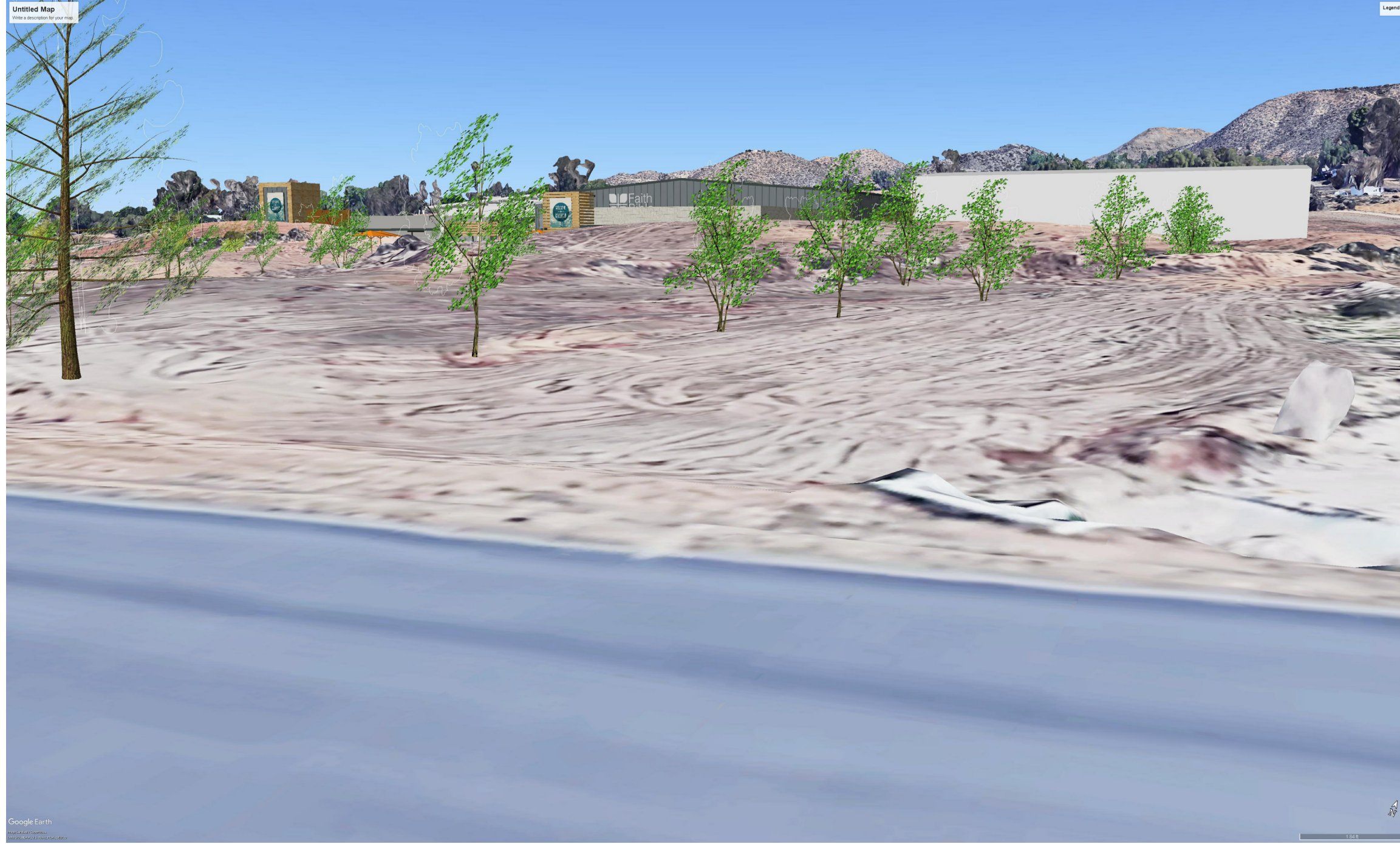
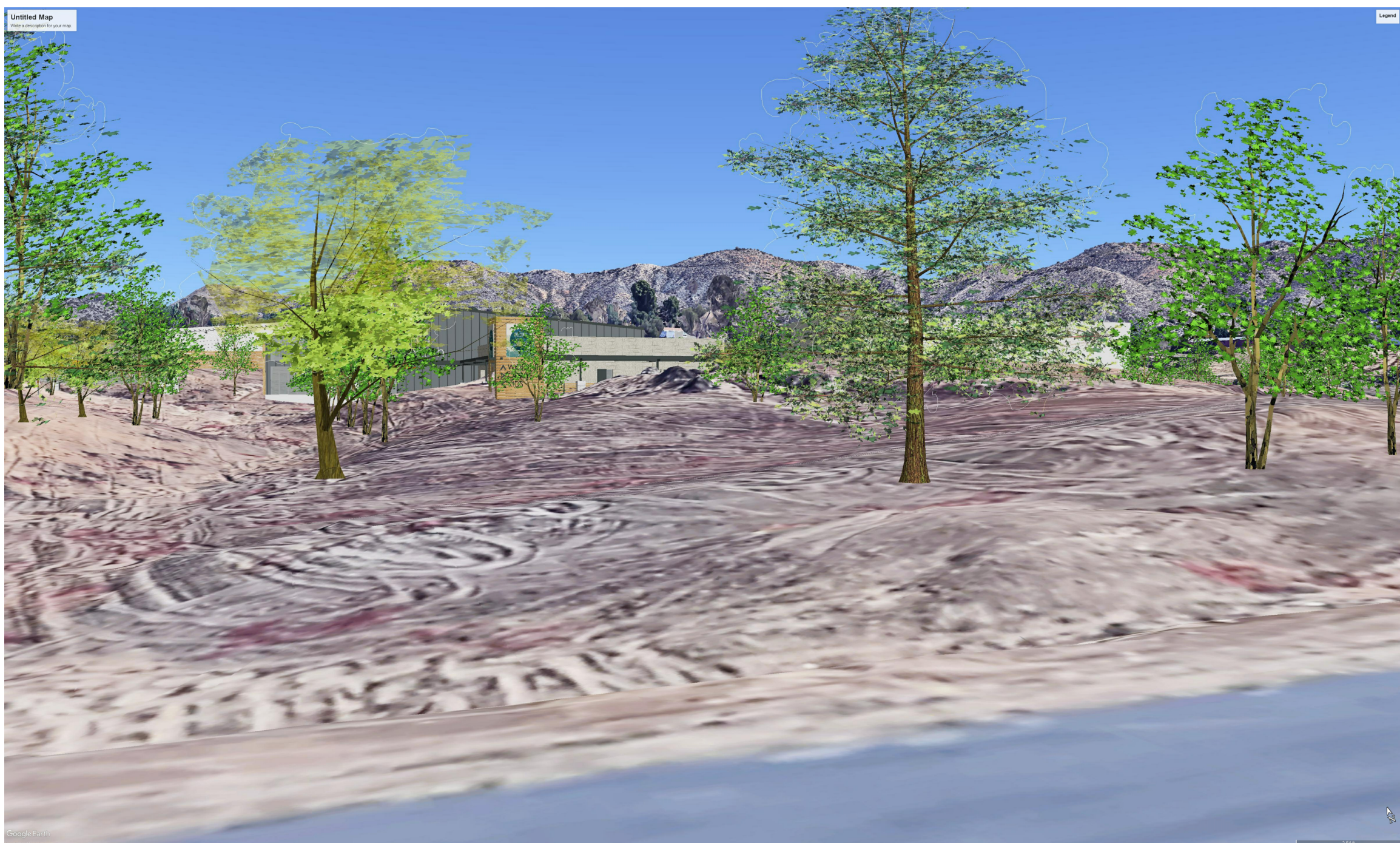
1



WEST SIGHTLINE STUDY

SCALE
1" = 50'-0"

2



3D ROOF VIEWS

SCALE
NONE

3

FAITH BIBLE CHURCH

Wildomar, CA 92595

SIGHT LINE STUDY

5.

Sheet No.

PLOT PLAN

DATE
01/23/2019

PROJECT
CODE
18630

1/23/2019 4:47:04 AM C:\Users\llores\Documents\Wildomar - FBC_Worship_Center_Central_tlores@visioneeringstudios.com.rvt



NORTH COLOR ELEVATION

SCALE
3/32" = 1'-0"

1



EAST COLOR ELEVATION

SCALE
3/32" = 1'-0"

2

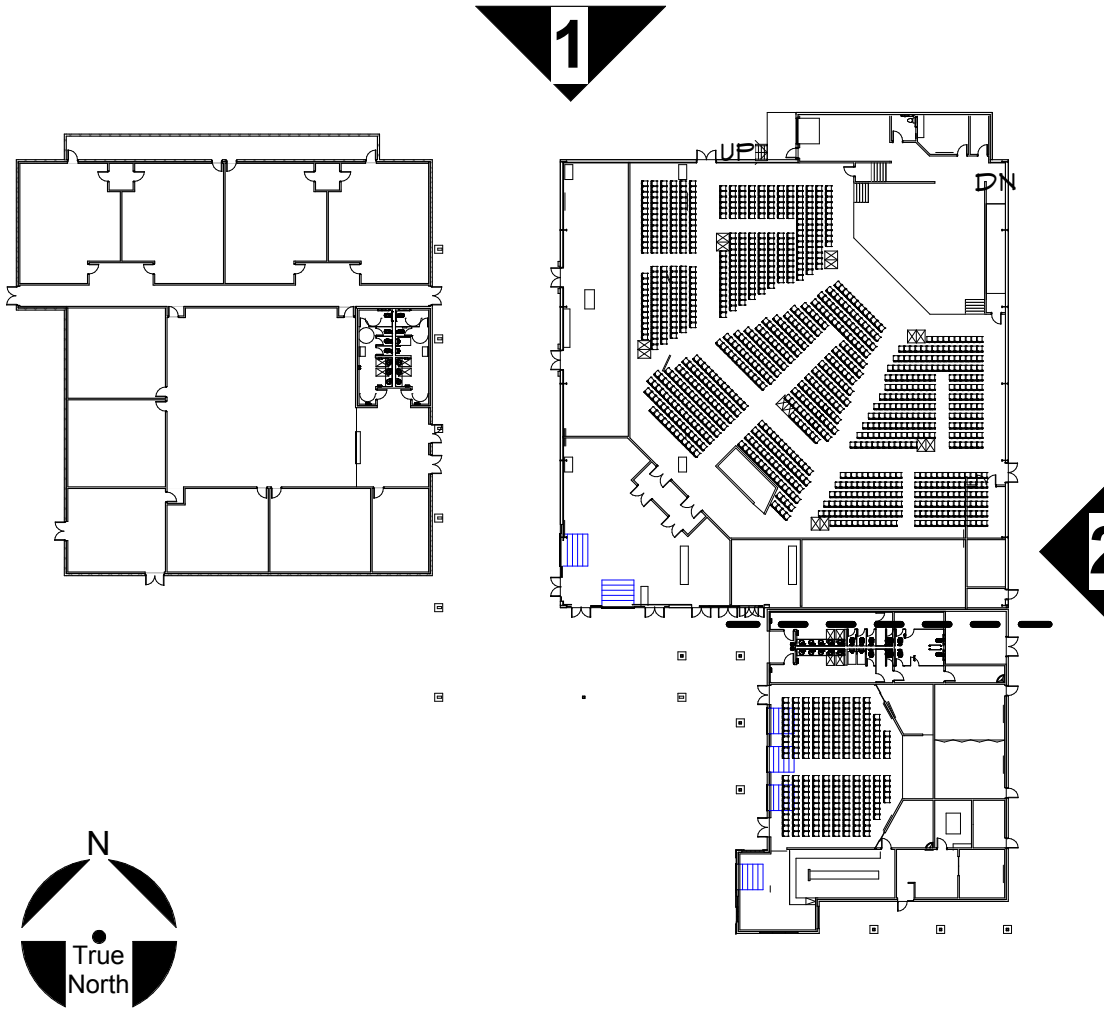
EXTERIOR FINISH SCHEDULE

- A PREFAB ROOF PANEL SYSTEM, R-30 COMPOSITE RIGID INSULATION
B ALUMINUM STOREFRONT SYSTEM - BRONZE ALUMINUM WITH PFG - SOLARCOOL (DUAL PANEL ASSEMBLY) GRAY GLASS, ONE INCH ASSEMBLY
C FIBER CEMENT LAP SIDING OV. WEATHER BARRIER OV. 2X RUNNERS
D HOLLOW METAL DOOR
E ACOUSTICALLY INSULATED MOTORIZED COILING DOOR
F MECHANICAL SCREEN, TYPICAL FOR ROOF TOP UNITS
G METAL COPING FACTORY PRE-FINISH
H PRE-ENGINEERED BUILDING SYSTEM WITH R-19 INSULATED WALL PANELS AND FACTORY SIMULATED MASONRY FINISH, COLOR SHALL BE SURREY BEIGE
J CMU WALL - ANGELUS - SHORELINE BURNISHED, FINISHED WITH APPROVED WATER REPELLENT AT ALL EXTERIOR EXPOSED SIDES
K MANUFACTURED STONE VENEER - CORONADO STONE - FINISHED WITH APPROVED WATER REPELLENT AT ALL EXTERIOR EXPOSED SIDES
L WOOD SLATS 1X6 CEDAR STAINED AND SEALED ALL SIDES FASTENED WITH GALVANIZED METAL FATENERS - SHERWIN WILLIAMS - SW9 110-B FRUITWOOD
M PROPOSED BUILDING GRAPHIC AREA UNDER SEPARATE PERMIT
N CEDAR WOOD SLATS FENCE, 6'-0" HIGH STAINED AND SEALED ALL SIDES, FASTENED WITH GALVANIZED FATENERS ON PAINTED STEEL TUBE FRAME WITH GATE
O 2-COAT PLASTER SYSTEM, DIRECT APPLIED TO CMU SUBSTRATE
P SHEET METAL CORNICE AND COPING FACTORY PRE-FINISH
Q 3X3 HORIZONTAL CEDAR WOOD SLATS AT 10' ON CENTER WITH 9 INTERMEDIATE VERTICAL MEMBERS, ONE AT EACH END, STAIN AND SEAL ALL SIDES
R EXTERIOR LIGHTING
S PRE-ENGINEERED BUILDING SYSTEM WITH R-19 INSULATED WALL PANELS
T PRE-ENGINEERED CANOPY WITH BACK BRACE AND GUTTER WITH DOWN SPOUTS
U ALUMINUM HANDRAIL
V 6X10 T/S DOUBLE MEMBERS WITH TAPERED END AS SHOWN, FINISH WITH (2) COATS OF ENAMEL PAINT OVER PRIMER
W TUBE STEEL CANOPY STRUCTURE MEMBERS, PAINT FINISH WITH (2) COATS OF ENAMEL PAINT OVER APPROVED PRIMER
X 4X6 T/S BACK BRACE AS SHOWN, FINISH WITH TYP. PAINT FINISH
Y STEEL COLUMN

LEGEND

- T.O. TOP OF
T.O.B. TOP OF BEAM
T.O.C.C. TOP OF CONCRETE CURB
T.O.C.S. TOP OF CONCRETE SLAB
T.O.G.R. TOP OF GUARD RAIL
T.O.L.N. TOP OF LOW WALL
T.O.P. TOP OF PARAPET
T.O.M. TOP OF MASONRY
T.O.T.S. TOP OF TOPPING SLAB

KEY PLAN



FAITH BIBLE CHURCH

Wildomar, CA 92595

PLOT PLAN

DATE
01/23/2019

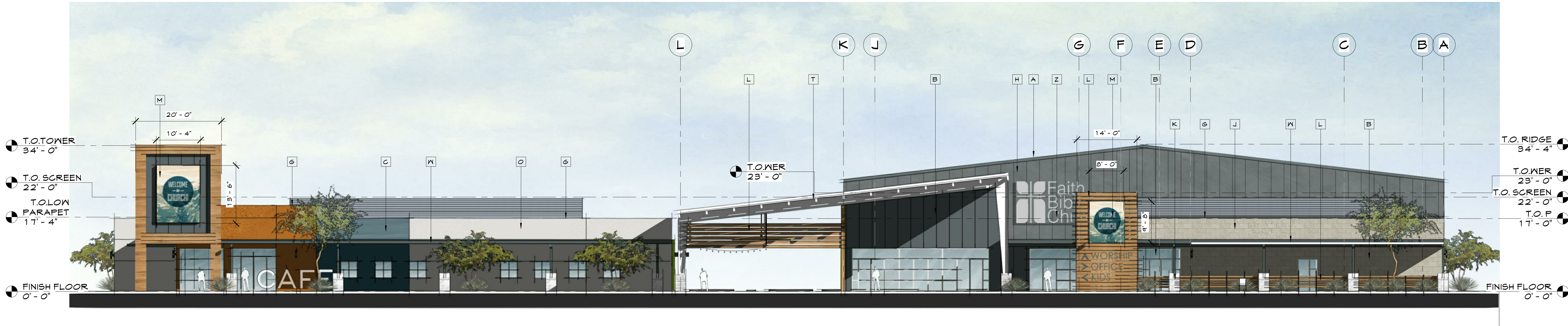
PROJECT
CODE
18630

EXTERIOR ELEVATIONS - NORTH AND
EAST

Sheet No.

7.

1/23/2019 5:22:49 AM C:\Users\llores\Documents\Wildomar - FBC_Worship_Center_Central_tlores@visioneeringstudios.com.rvt



SOUTH COLOR ELEVATION SCALE 3/32" = 1'-0" 3



WEST COLOR ELEVATION SCALE 3/32" = 1'-0" 4

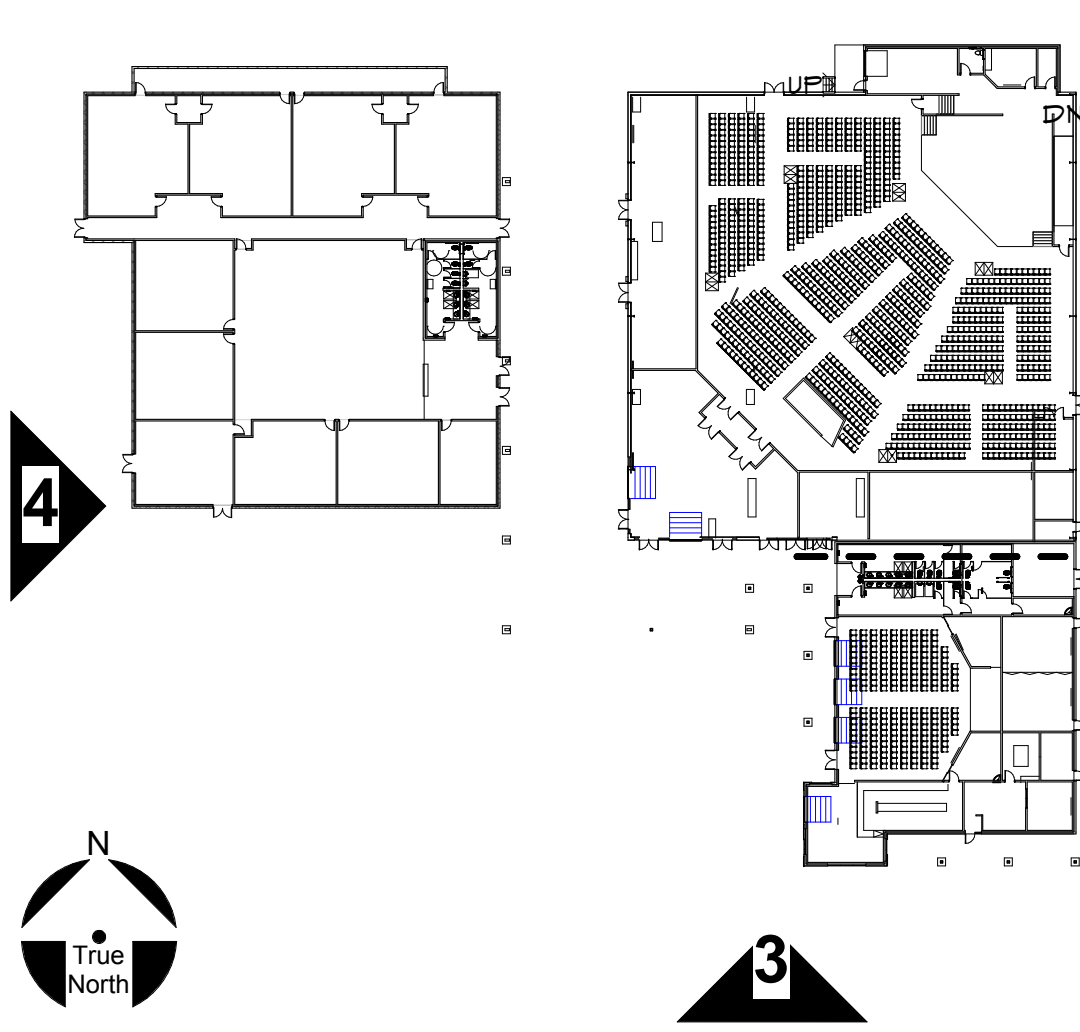
EXTERIOR FINISH SCHEDULE

A	PREFAB ROOF PANEL SYSTEM, R-30 COMPOSITE RIGID INSULATION
B	ALUMINUM STOREFRONT SYSTEM - BRONZE ALUMINUM WITH PFG - SOLARCOOL (DUAL PANEL ASSEMBLY) GRAY GLASS, ONE INCH ASSEMBLY
C	FIBER CEMENT LAP SIDING OV. WEATHER BARRIER OV. 2X RUNNERS
D	HOLLOW METAL DOOR
E	ACOUSTICALLY INSULATED MOTORIZED COILING DOOR
F	MECHANICAL SCREEN, TYPICAL FOR ROOF TOP UNITS
G	METAL COPING FACTORY PRE-FINISH
H	PRE-ENGINEERED BUILDING SYSTEM WITH R-19 INSULATED WALL PANELS AND FACTORY SIMULATED MASONRY FINISH; COLOR SHALL BE SURREY BEIGE
J	CMU WALL - ANGELUS - SHORELINE BURNISHED, FINISHED WITH APPROVED WATER REPELLENT AT ALL EXTERIOR EXPOSED SIDES
K	MANUFACTURED STONE VENEER - CORONADO STONE - FINISHED WITH APPROVED WATER REPELLENT AT ALL EXTERIOR EXPOSED SIDES
L	WOOD SLATS 1X6 CEDAR STAINED AND SEALED ALL SIDES FASTENED WITH GALVANIZED METAL FATENERS - SHERWIN WILLIAMS - SW9 110-B FRUITWOOD
M	PROPOSED STRETCHED BANNER GRAPHIC AREA UNDER SEPARATE PERMIT
N	CEDAR WOOD SLATS FENCE, 6'-0" HIGH STAINED AND SEALED ALL SIDES, FASTENED WITH GALVANIZED FATENERS ON PAINTED STEEL TUBE FRAME WITH GATE
O	2-COAT PLASTER SYSTEM, DIRECT APPLIED TO CMU SUBSTRATE
P	SHEET METAL CORNICE AND COPING FACTORY PRE-FINISH
Q	3X3 HORIZONTAL CEDAR WOOD SLATS AT 10' ON CENTER WITH 9 INTERMEDIATE VERTICAL MEMBERS, ONE AT EACH END, STAIN AND SEAL ALL SIDES
R	EXTERIOR LIGHTING
S	PRE-ENGINEERED BUILDING SYSTEM WITH R-19 INSULATED WALL PANELS
T	PRE-ENGINEERED CANOPY WITH BACK BRACE AND GUTTER WITH DOWN SPOUTS
U	ALUMINUM HANDRAIL
V	6X10 T/S DOUBLE MEMBERS WITH TAPERED END AS SHOWN, FINISH WITH (2) COATS OF ENAMEL PAINT OVER PRIMER
W	TUBE STEEL CANOPY STRUCTURE MEMBERS, PAINT FINISH WITH (2) COATS OF ENAMEL PAINT OVER APPROVED PRIMER
X	4X6 T/S BACK BRACE AS SHOWN, FINISH WITH TYP. PAINT FINISH
Y	STEEL COLUMN
Z	BUILDING SIGNAGE UNDER SEPARATE PERMIT

LEGEND

T.O.	TOP OF
T.O.B.	TOP OF BEAM
T.O.G.G.	TOP OF CONCRETE CURB
T.O.G.S.	TOP OF CONCRETE SLAB
T.O.G.P.	TOP OF CONCRETE PAVEMENT
T.O.F.D.	TOP OF FLOOR DRAIN
T.O.F.S.	TOP OF COMPOSITE FINISHED SURFACE
T.O.G.R.	TOP OF GUARD RAIL
T.O.L.W.	TOP OF LOW WALL
T.O.P.	TOP OF PARAPET
T.O.M.	TOP OF MASONRY
T.O.S.S.	TOP OF STRUCTURAL SLAB
T.O.T.S.	TOP OF TOPPING SLAB

KEY PLAN



FAITH BIBLE CHURCH

Sheet No. 8.

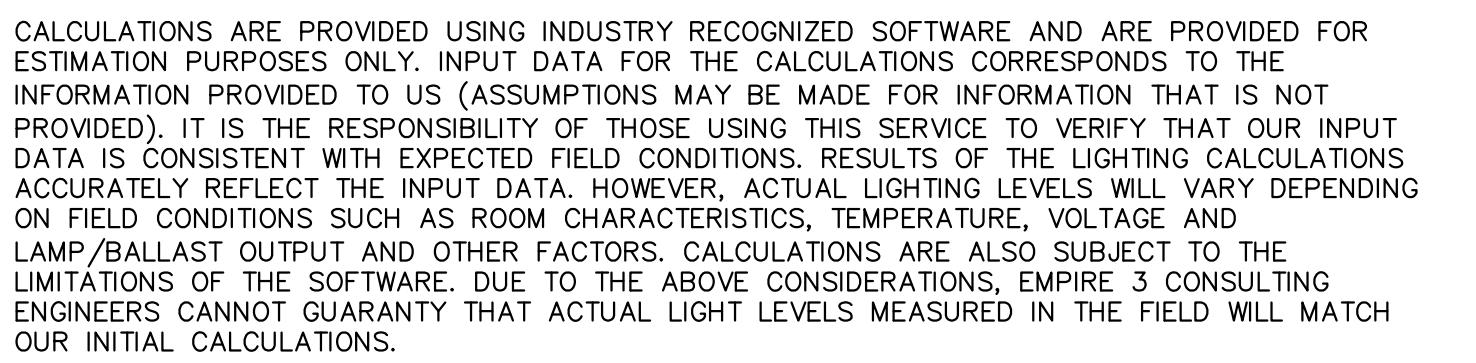
EXTERIOR ELEVATIONS - SOUTH AND WEST

DATE
01/23/2019

PROJECT
CODE
18630

PLOT PLAN

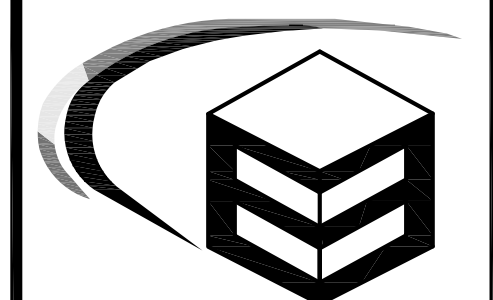
Wildomar, CA 92595



NOTE:

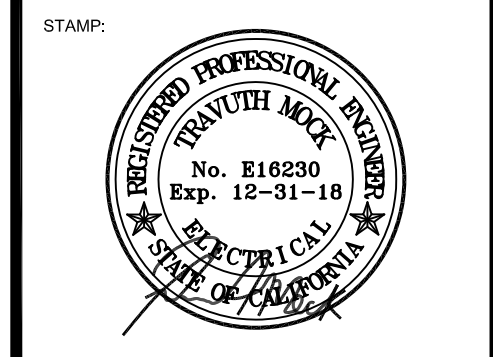
1. VERIFY ALL LIGHT FIXTURE FINISH COLORS WITH ARCHITECTS AND/OR OWNER'S REPRESENTATIVE.

Statistics						
Description	Symbol	Avg	Max	Min	Max/Min	Avg/Min
PARKING LOT HARDSCAPE	+	1.6 fc	5.0 fc	0.2 fc	25.0:1	8.0:1



Empire3 Consulting Engineers Inc.
Mechanical - Electrical - Plumbing
 7010 Arlington Ave., Suite 205
 Riverside, CA. 92503
 Telephone: (951) 509-1900
 Fax: (951) 509-1911
 Website: www.empire3.net

The data in this document incorporate proprietary rights of Empire 3 Consulting Engineers Inc. any party accepting this document does so in confidence and agrees that it shall not be duplicated in whole or in part, nor disclose to others without the written consent of Empire 3 Consulting Engineers Inc.



VISIONEERING
STUDIOS
CONSTRUCTION
2050 Main St., Suite 400
Irvine, CA 92614

FAITH BIBLE CHURCH

WILDOMAR, CA

KEY PERSON(S) AND APPROVALS	
PROJECT MGR. :	DRAWN BY:
TRAVUTH MOCK	E3
CHECKED:	APPROVED BY:
TM	TM
E3 PROJECT NO. :	

18082-00-228

DISTRIBUTION:	DATE:
Plan Check Submittal	10/08/18

[illegible]

DRAWING TITLE:

OUTDOOR
TITLE 24

SHEET:

E-300

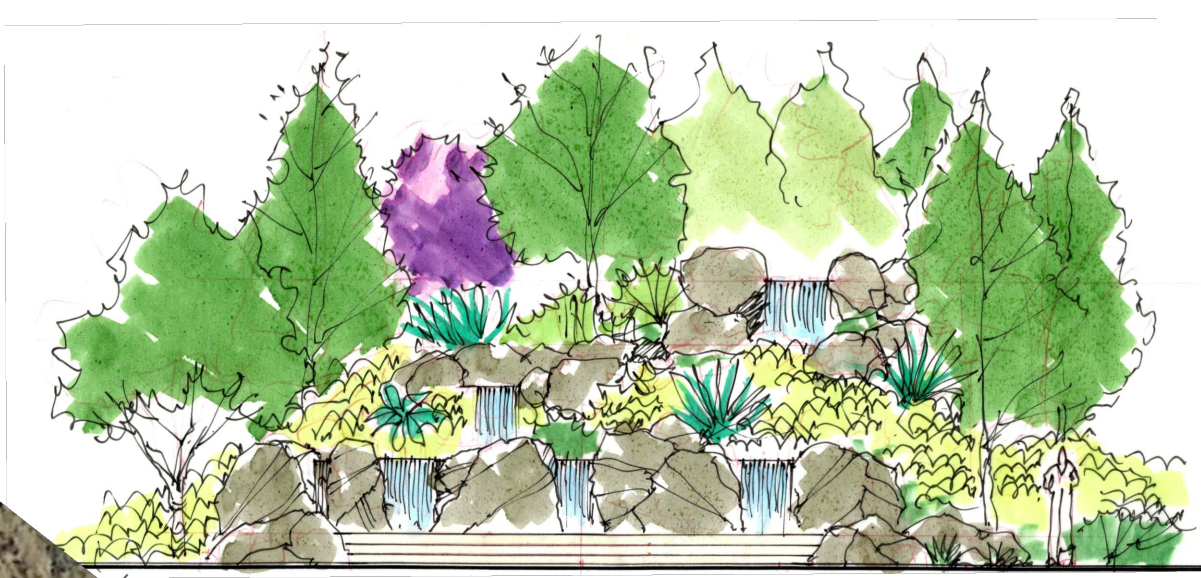


ENTRY MONUMENT

LANDSCAPE DESIGN NOTES

- 50% OF THE TREES PROPOSED FOR THIS PROJECT ARE LOW WATER USE.
- 50% OF THE SHRUBS, GROUND COVERS AND VINES PROPOSED FOR THIS PROJECT ARE LOW WATER USE.
- TREES SHALL BE LOCATED 10' MIN. FROM SEWER, GAS, AND WATER LINES, 10' FROM FIRE HYDRANTS, 15' FROM STREET LIGHTS.
- 3" MIN. DEPTH SHREDDED BARK MULCH TO BE USED IN ALL PLANTING AREAS EXCEPT TURF AND HYDROSEED AREAS.
- PLANT SELECTION TO ENSURE FULL SLOPE COVERAGE WITHIN 12 MONTHS OF PLANTING.
- AGRONOMIC SOIL TEST SHALL BE PERFORMED DURING GRADING.

WATER USE CLASSIFICATION :
POTABLE WATER



WATER FEATURE AT FUTURE WEDDING AREA

CONCEPTUAL PLANT LEGEND

BOTANICAL NAME	COMMON NAME	SIZE	SPACING	PLANT FACTOR
LANDSCAPE TREES				
SCHINUS MOLLE GLEDITSIA T. 'SHADE MASTER' PINUS ELDARICA PLATANUS ACERIFOLIA OLEA EUROPAEA	CALIFORNIA PEPPER HONEY LOCUST AFGHAN PINE LONDON PLANE TREE FRUITLESS OLIVE	MIN. 15 GALLON	AS SHOWN	LOW LOW LOW LOW LOW
ACCENT TREES				
ACACIA BAILLYANA CERCIDILUM FOLRIBUNDUM JACARANDA MIMOSIFOLIA LIQUIDAMBER STYRACIFLUA LAGERSTROEMIA INDICA BAUHINIA VARIEGATA PRUNUS C. 'THUNDERCLOUD' PYRUS CALLERYANA QUERCUS AGRIFOLIA SCHINUS MOLLE	BAILEYS ACACIA PALO VERDE TREE JACARANDA SWEET GUM CRAPE MYRTLE ORCHID TREE PURPLE LEAF PLUM CALLERY PEAR COAST LIVE OAK CALIFORNIA PEPPER	MIN. 24" BOX	AS SHOWN	LOW LOW MEDIUM MEDIUM MEDIUM MEDIUM MEDIUM LOW LOW
PARKING TREES				
PLATANUS ACERIFOLIA PISTACIA CHINENSIS QUERCUS VIRGINIANA SCHINUS MOLLE TIPUANIA TIPU ULMUS PARVIFOLIA	LONDON PLANE TREE CHINESE PISTACHE SOUTHERN LIVE OAK CALIFORNIA PEPPER TIPU TREE EVERGREEN ELM	MIN. 24" BOX	AS SHOWN	MEDIUM MEDIUM MEDIUM LOW MEDIUM MEDIUM
SCREEN SHRUBS				
PRUNUS ILLICIFOLUS LYONII GREVILLEA NOELII DODONAEA VISCOSA LIGUSTRUM TEXANUM RHAPHIOLEPIS 'MAJESTIC BEAUTY'	CATALINA CHERRY GREVILLEA HOP SEED BUSH TEXAS PISTACHE INDIA HAWTHORN	5 GALLON 5 GALLON 5 GALLON 5 GALLON 5 GALLON	4' O.C. 4' O.C. 4' O.C. 4' O.C. 4' O.C.	LOW LOW MEDIUM MEDIUM MEDIUM
FOUNDATION / LANDSCAPE SHRUBS				
ABELIA GRANDIFLORA ALYOGYNE HUEGELII BUXUS JAPONICA CISTUS PURPUREUS DIETES VEGETA GREVILLEA NOELII MYRTUS COMMUNIS 'COMPACTA' NANDINA DOMESTICA LANTANA CAMARA LEUCOPHYLLUM 'F. GREEN CLOUD' PHOTINIA FRASER PENNESETUM SETACEUM RHAPHIOLEPIS INDICA ROSA SPECIES ROSMARINUS OFFICINALIS SALVIA LEUCANTHIA MUEHLENBERGIA SP.	GLOSSY ABELIA BLUE HIBISCUS JAPANESE BOXWOOD ROCKROSE FORTNIGHT LILY GREVILLEA COMPACT MYRTLE HEAVENLY BAMBOO LANTANA TEXAS RANGER PHOTINIA FOUNTAIN GRASS INDIA HAWTHORN ROSE ROSEMARY MEXICAN SAGE DEER GRASS	5 GALLON 5 GALLON 5 GALLON 5 GALLON 5 GALLON 5 GALLON 5 GALLON 5 GALLON 5 GALLON 5 GALLON 5 GALLON 5 GALLON 5 GALLON 5 GALLON 5 GALLON 5 GALLON 5 GALLON	4' O.C. 6' O.C. 4' O.C. 4' O.C. 4' O.C. 4' O.C. 4' O.C. 4' O.C. 6' O.C. 4' O.C. 4' O.C. 18" O.C. 4' O.C. 4' O.C. 2' O.C. 4' O.C. 18" O.C.	MEDIUM LOW MEDIUM LOW MEDIUM LOW MEDIUM LOW LOW MEDIUM MEDIUM LOW MEDIUM MEDIUM LOW LOW LOW
ACCENT SHRUBS / PERENNIALS				
AGAPANTHUS AFRICANUS ANIGOSANTHOS FLAVIDUS CISTUS PURPUREUS DIETES BICOLOR HELIOTRICHON SEMPERVIRENS HEMEROCALLIS HYBRID ROSA SPECIES	LILY-OF-THE-NILE KANGAROO PAW ROCKROSE FORTNIGHT LILY BLUE DAT GRASS DAYLILY SHRUB ROSE	1 GALLON 1 GALLON 1 GALLON 1 GALLON 1 GALLON 1 GALLON 1 GALLON	2' O.C. 2' O.C. 2' O.C. 2' O.C. 2' O.C. 2' O.C. 2' O.C.	MEDIUM LOW LOW MEDIUM MEDIUM MEDIUM MEDIUM
GROUNDCOVERS				
BACCHARIS P. 'PIGEON POINT' CEANOETHUS G. HORIZONTALIS CISTUS SALVIFOLIUS GAZANIA SP. LANTANA MONTEVIDENSIS LONICERA JAPONICA 'HALLIANA' MYOPORUM PARVIFOLIA PELARGONIUM PELTATUM ROSMARINUS O. 'PROSTRATUS' ROSA 'SEA FOAM'	DWARF COYOTE BRUSH CARMEL CREEPER SAGELEAF ROCKROSE GAZANIA TRAILING LANTANA HALL'S HONEYSUCKLE MYOPORUM IVY GERANIUM PROSTRATE ROSEMARY GROUNDCOVER ROSE	1 GALLON @ 24" O.C. 1 GALLON @ 24" O.C. 1 GALLON @ 24" O.C. FLATS @ 12" O.C. FLATS @ 12" O.C. FLATS @ 12" O.C. FLATS @ 12" O.C. 1 GALLON @ 24" O.C. 1 GALLON @ 24" O.C. 5 GALLON @ 24" O.C.		LOW LOW LOW MEDIUM LOW LOW LOW MEDIUM LOW MEDIUM
VINES				
DISTICTUS BUCCINATORIA BOUGAINVILLEA SPECIES JASMINUM POLYANTHEMUM PARTHENOSSISUS TRICUSPIDATA ROSA BANKSIAE WISTERIA FLORIBUNDA	RED TRUMPET VINE BOUGAINVILLEA PINK JASMINE BOSTON IVY CLIMBING ROSE WISTERIA	5 GALLON 5 GALLON 5 GALLON 5 GALLON 5 GALLON 5 GALLON	10' O.C. 10' O.C. 10' O.C. 10' O.C. 10' O.C. 10' O.C.	MEDIUM MEDIUM MEDIUM MEDIUM MEDIUM MEDIUM
NON-IRRIGATED HYDROSEED MIX				
HYDROSEED MIX: CALANDRINIA CILIATA ESCHSCHOLZIA CALIFORNICA LATHRAEA CALIFORNICA LUPINUS ALBIFRONS NASSELLA PULCHRA	RED MAIDS CALIFORNIA POPPY GOLDFIELDS SILVER BUSH LUPINE PURPLE NEEDLE GRASS	1 LBS / 1,000 S.F. 4 LBS / 1,000 S.F. 3 LBS / 1,000 S.F. 3 LBS / 1,000 S.F. 8 LBS / 1,000 S.F.		

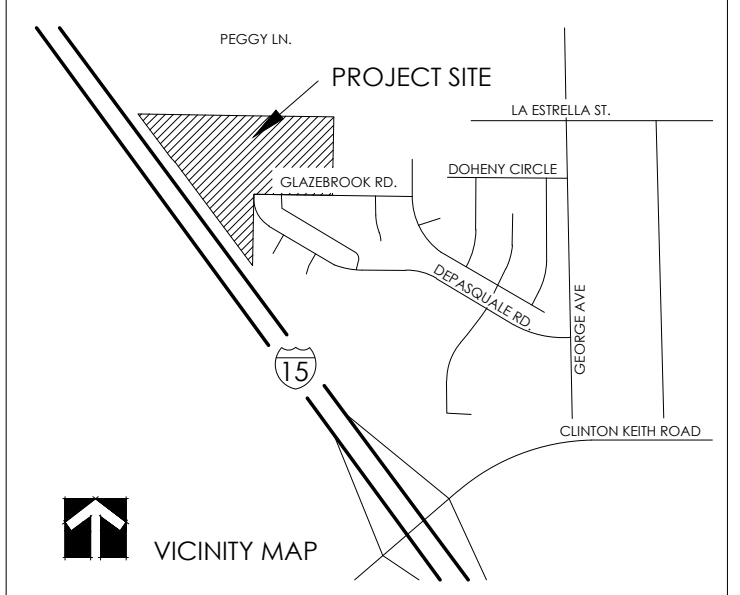
PROJECT TYPE: "NEW"

Total Project Acreage: 24.31 Acres
Total Landscape Area: 592,237 s.f.
Percentage of Turf: 79,228 s.f. /13%

ASSESSOR'S PARCEL NUMBER(S)
APN 376-410-002
APN 376-410-024

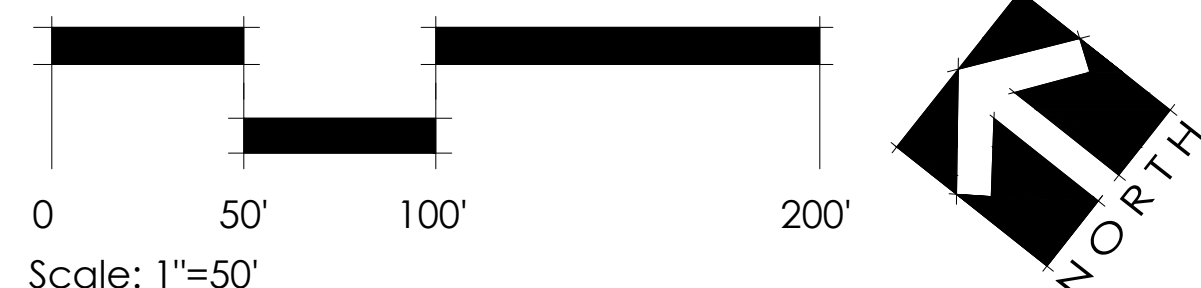
DESIGN TEAM

ARCHITECT: VISIONEERING STUDIOS ARCHITECTURE
CIVIL ENGINEER: FM CIVIL ENGINEERS, INC.
CONTRACTOR: PACIFIC CONSTRUCTION GROUP
LANDSCAPE ARCHITECT: DAVID NEAULT ASSOCIATES, INC.



LANDSCAPE MASTER PLAN
SHEET 1 OF 3

LANDSCAPE CONCEPT FOR:
Faith Bible Church
WILDOMAR, CALIFORNIA



TOT LOT

- * 2-5 YEAR PLAY AREA WITH PLAY STRUCTURE AND MISC. FEATURES
- * 5-12 YEAR PLAY AREA WITH LARGE PLAY STRUCTURE, SHADE STRUCTURE, SWINGS AND MISC. FEATURES
- * SECURITY FENCING
- * SEAT WALLS AND BENCHES WITH BACKS
- * SHADE TREES

WATER USE CLASSIFICATION : POTABLE WATER

Riverside County Ordinance 859 Landscape Water Use Calculations

Project Type Commercial

Faith Bible Church

0.45 ETo allowance

Applicant to use drop down menus in cells that indicate a selection to describe each hydrozone. Where "INPUT" is shown, applicant to enter project specific information. Please note that embedded formulas will reflect as 'false' or as an error until selections are completed.

1 Maximum Annual Water Allowance (MAWA)

INPUT the total square footage of landscape = 592,237.00 S.F.

INPUT the Hist. ETo for the area = 49.54

MAWA = 1,191,944 cu ft / yr

2 Estimated Annual Water Use (EAWU)

Hydrozone # 1

INPUT Square Foot Area of Hydrozone = 63,761

Hydrozone Irrigation Efficiency = 0.75

EAWU = 279,274 cu ft / yr

Plant Factor = 0.8

Rotor

Plant Type

Turf - Recreational

Water Use

High SLA

Hydrozone # 2

INPUT square footage of hydrozone = 140,803

Hydrozone Irrigation Efficiency = 0.85

EAWU = 136,041 cu ft / yr

Plant Factor = 0.2

In-line Drip-Densely Planted

Plant Type

Shrubs / Groundcover

Water Use

Low

Hydrozone # 3

INPUT square footage of hydrozone = 15,467

Hydrozone Irrigation Efficiency = 0.60

EAWU = 84,682 cu ft / yr

Plant Factor = 0.8

Spray

Plant Type

Turf - Recreational

Water Use

High SLA

Hydrozone # 4

INPUT square footage of hydrozone = 100,715

Hydrozone Irrigation Efficiency = 0.90

EAWU = 229,756 cu ft / yr

Plant Factor = 0.5

Point Source Drip

Plant Type

Shrubs / Groundcover

Water Use

Moderate

Hydrozone # 5

INPUT square footage of hydrozone = 28,402

Hydrozone Irrigation Efficiency = 0.90

EAWU = 0 cu ft / yr

Plant Factor = 0

Point Source Drip

Plant Type

Trees / Mulch

Water Use

n/a Class II Base

Hydrozone # 6

INPUT square footage of hydrozone = 243,089

Hydrozone Irrigation Efficiency = 0.75

EAWU = 0 cu ft / yr

Plant Factor = 0

Rotor

Plant Type

Trees / Mulch

Water Use

n/a Naturalized

SubTotal EAWU = 729,753 cu ft / yr

Input Irrigation System Operation Factor = 0.85

Total EAWU = 858,533

MAWA - EAWU = 333,411 cu ft / yr (this number must be positive)

PERCENTAGE OF WATER SAVED RELATIVE TO MAX. ALLOWED = 28%

* Trees are not required to be listed as a separate hydrozone if understory is planted with plants of an equal or higher plant factor, and foot area is already included in calculations.

LANDSCAPE DESIGN CONCEPT

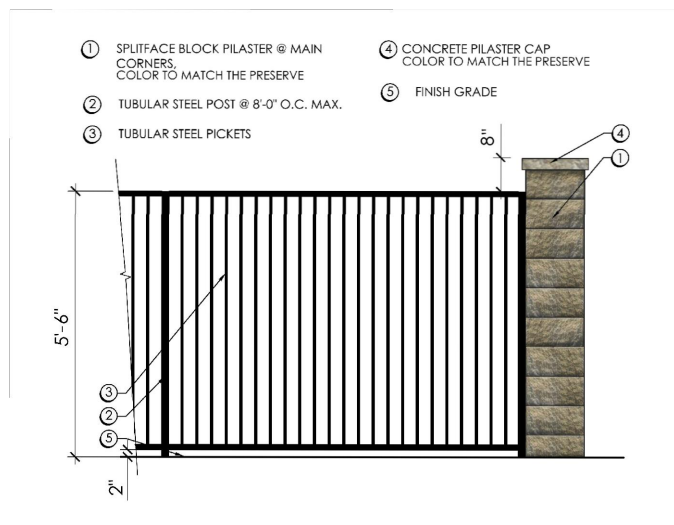
- Campus-style design for large with intimate outdoor gatherings.
- Efficient pedestrian circulation through parking areas.
- Landscape design with an Agrarian theme.
- Garden and play spaces for families and children.
- Consideration for mountain views.
- Drought tolerant, low maintenance plants.
- Natural shade with canopy trees.
- Blending with surrounding neighborhood landscape.
- Integration with City Streetscape.
- Compliance with City of Wildomar Landscape Standards.

LANDSCAPE DESIGN GUIDELINES

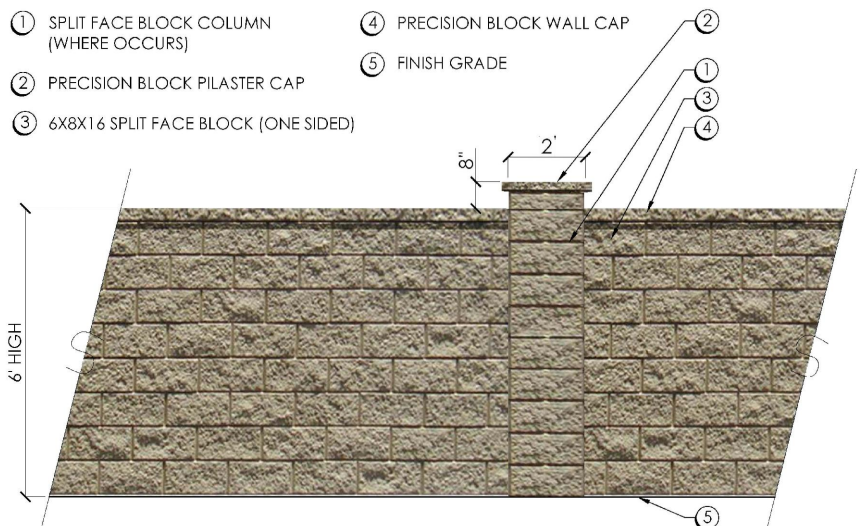
- ALL LANDSCAPE SHALL CONFORM TO ORDINANCE NO. 859 AND COUNTY OF RIVERSIDE GUIDE TO CALIFORNIA FRIENDLY LANDSCAPING.
- ALL PLANTING AREAS SHALL BE IRRIGATED WITH AN AUTOMATIC IRRIGATION SYSTEM AND AN ET BASED CONTROLLER, PER ORDINANCE NO. 859.
- ALL PLANTING AREAS SHALL RECEIVE 3" OF SHREDDED BARK MULCH AND 1 1/2" ON GROUND COVER FROM FLATS.
- ALL TREES WITHIN 6' OF ANY HARDSCAPE SHALL RECEIVE 36" DEEP, BY 20' LONG (CENTERED ON TREE) LINEAR ROOT BARRIER.
- ALL SLOPES 3' IN VERTICAL HEIGHT OR GREATER SHALL BE PLANTED WITH SHRUBS AND TREES AND IRRIGATED PER THE RIVERSIDE COUNTY REQUIREMENTS FOR SLOPE EROSION CONTROL LANDSCAPING FOR SLOPES SHALL MEET BUILDING AND SAFETY REQUIREMENTS.
- LANDSCAPING SHALL CONSIST OF A COMBINATION OF TREES, SHRUBS AND GROUND COVERS AS LISTED IN THE CALIFORNIA FRIENDLY PLANT LIST PROVIDED BY THE COUNTY.

LANDSCAPE ACREAGE

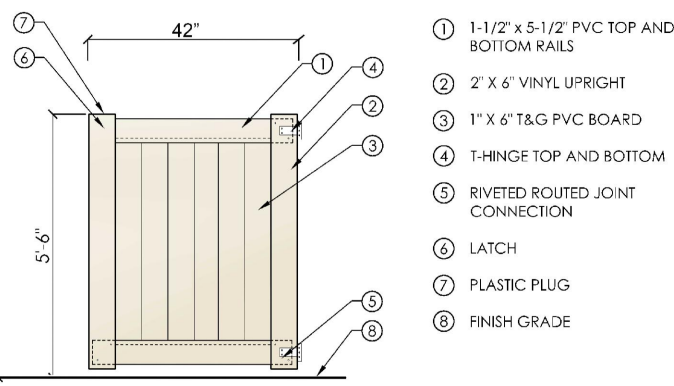
- TOTAL LANDSCAPE AREA - 14.7 ACRES



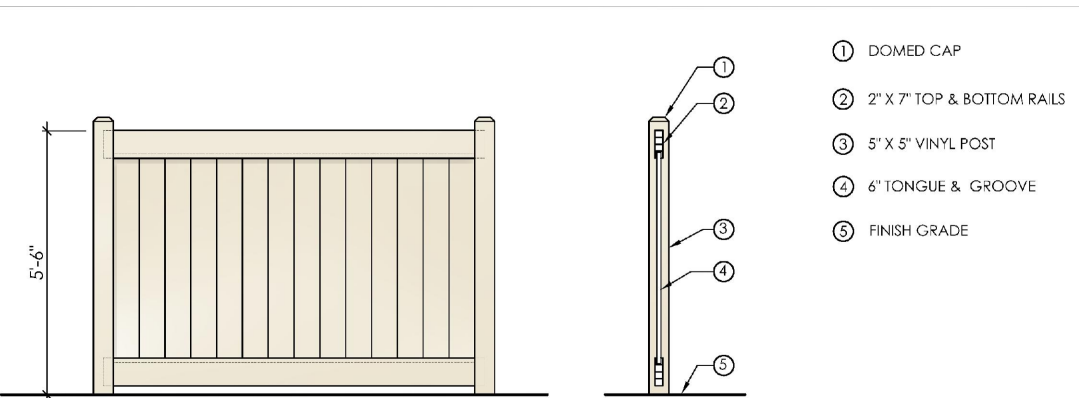
6' TUBULAR STEEL FENCE - 1/4"=1'-0"



6' TAN SPLIT-FACE BLOCK WALL - 1/4"=1'-0"



VINYL GATE - "WHITE" - 1/4"=1'-0"



VINYL FENCE - "WHITE" - 1/4"=1'-0"

ENLARGEMENTS
SHEET 2 OF 3

DESIGN TEAM

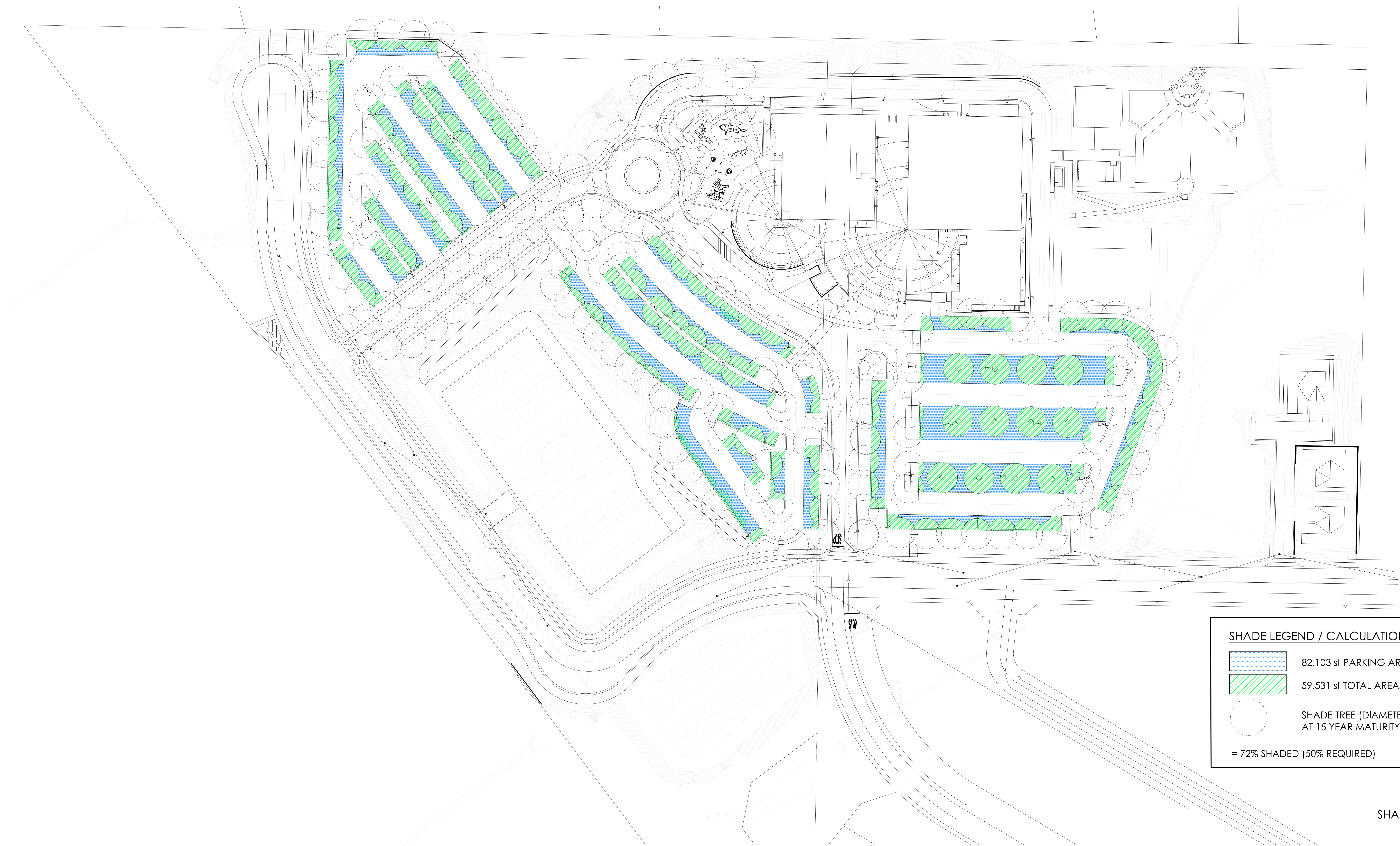
ARCHITECT:
CIVIL ENGINEER:
CONTRACTOR:
LANDSCAPE ARCHITECT:

VISIONEERING STUDIOS ARCHITECTURE
FM CIVIL ENGINEERS, INC.
PACIFIC CONSTRUCTION GROUP
DAVID NEAULT ASSOCIATES, INC.

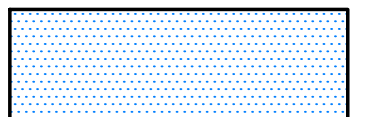
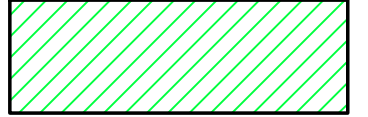
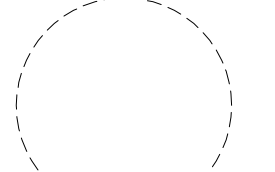


LANDSCAPE CONCEPT FOR:





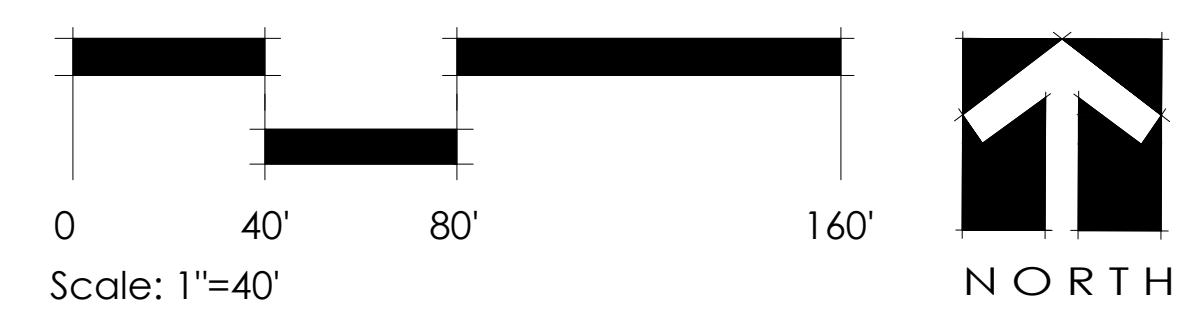
SHADE LEGEND / CALCULATIONS

	82,103 sf PARKING AREA
	59,531 sf TOTAL AREA OF SHADE
	SHADE TREE (DIAMETER SHOWN AT 15 YEAR MATURITY)
= 72% SHADED (50% REQUIRED)	


SHADE CALCULATIONS
SHEET 3 OF 3

LANDSCAPE CONCEPT FOR:

 WILDOMAR, CALIFORNIA



DESIGN TEAM
 ARCHITECT: VISIONEERING STUDIOS ARCHITECTURE
 CIVIL ENGINEER: FM CIVIL ENGINEERS, INC.
 CONTRACTOR: PACIFIC CONSTRUCTION GROUP
 LANDSCAPE ARCHITECT: DAVID NEAULT ASSOCIATES, INC.



David NEAULT
ASSOCIATES Inc.
951 | 296 | 3430
www.dneault.com
01.22.19