

## Memorandum

**To:** Cristin Hallissy, Branch Chief, Environmental Analysis Branch

**From:** Carie Montero, Environmental Lead, Parsons

**Date:** November 30, 2018

**Re:** Interstate 80/Gilman Street Interchange Improvement Project  
– Addendum to the Technical Reports  
District 04 - ALA - 80 - PostMiles 6.38 / 6.95  
EA 04-0A7700 / Project ID# 0400020155

---

### 1.1 ADDENDUM OF FIGURE REVISIONS

This addendum updates the project footprint and study area boundary depicted in various figures in the technical reports prepared for the Interstate 80 (I-80)/Gilman Street Interchange Improvement Project. This revision to the project footprint and study area boundary does not result in any change in the affected environment or potential impacts, and the findings presented in the previously approved technical reports remain valid. The technical reports, figure number, and figure name included in this addendum are identified below. The revised figures are attached at the end of this memorandum.

#### **Air Quality Report, June 2018**

Figure 1-2. Map of the Project and Nearby Roadways

Figure 3-2. Map of Air Quality Monitoring Station Nearest to the Project

Figure 3-3. Sensitive Receptors Located Near the Proposed Project

#### **Community Impact Assessment, August 2018**

Figure 1-2: Project Location

Figure 1-3: Roundabout Alternative

Figure 2-1: Existing Land Use

Figure 2-2: BCDC Jurisdiction and Designations

Figure 2-3: Parks and Recreational Facilities

Figure 4-1: Socioeconomic Study Area

Figure 4-2: Community Facilities and Services

Figure 4-3: Proposed Property Acquisitions

Figure 5-1: Bicycle Routes and Pedestrian Facilities

#### **Initial Site Assessment, May 2018**

Figure 2: Project Location

Figure 3: Roundabout Alternative

Figure 4: Site Identifier Map

**Noise Abatement Decision Report, August 2018**

Figure 2. Project Location Map

Appendix A Figure 1

**Noise Study Report, July 2018**

Figure 2-2. Project Location Map

Appendix A Figure 1

**Paleontological Identification/Evaluation Report, June 2018**

Figure 2. Project Location

Figure 3. Roundabout Alternative

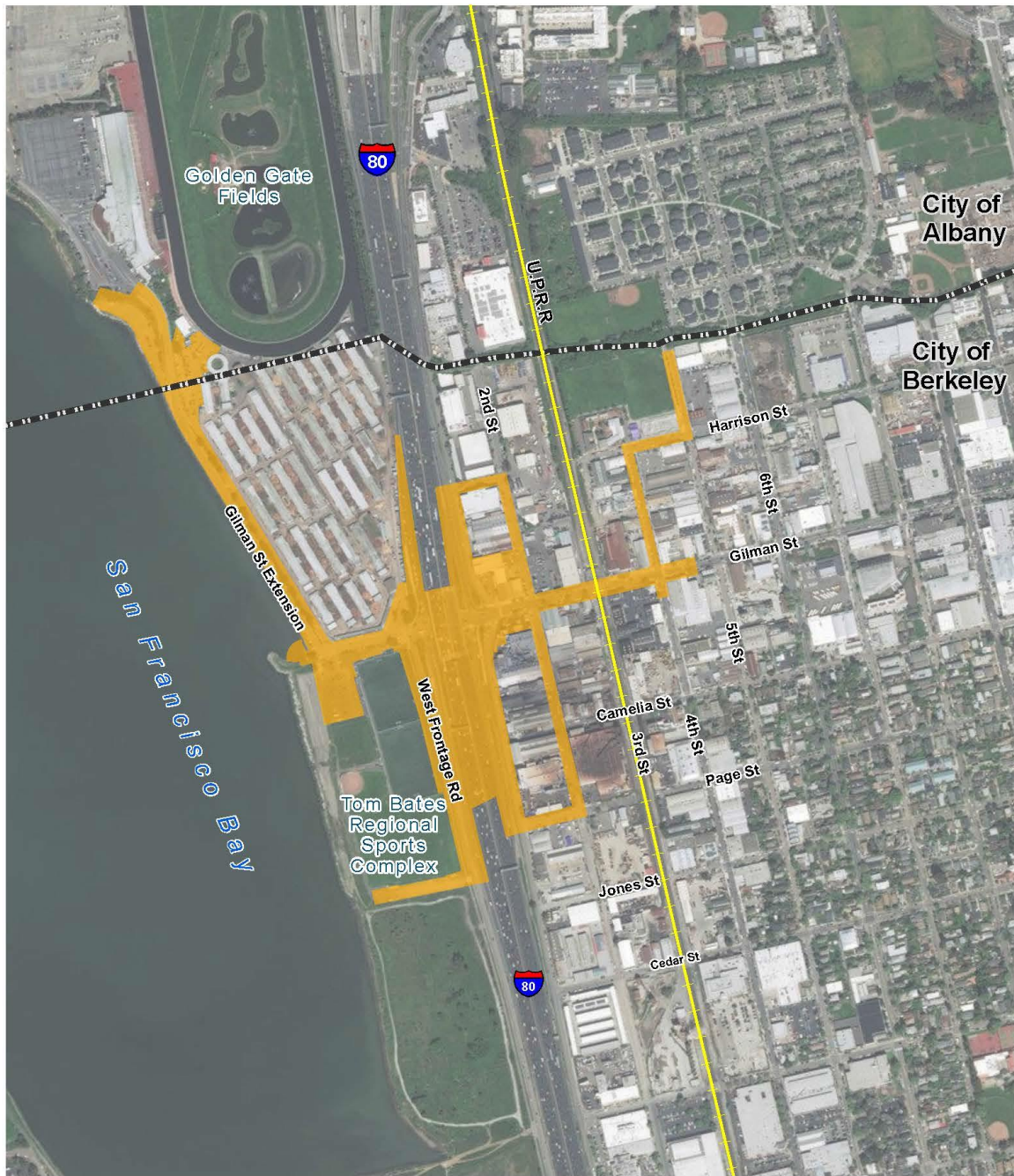
Figure 4. Geologic Map

**Visual Impact Assessment**

Figure 2: Project Location

Figure 3: Visual Assessment Units

Air Quality Report, June 2018



-  Project Limits
-  City Limits
-  Rail

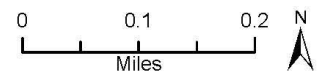


Figure 1-2. Map of the Project and Nearby Roadways



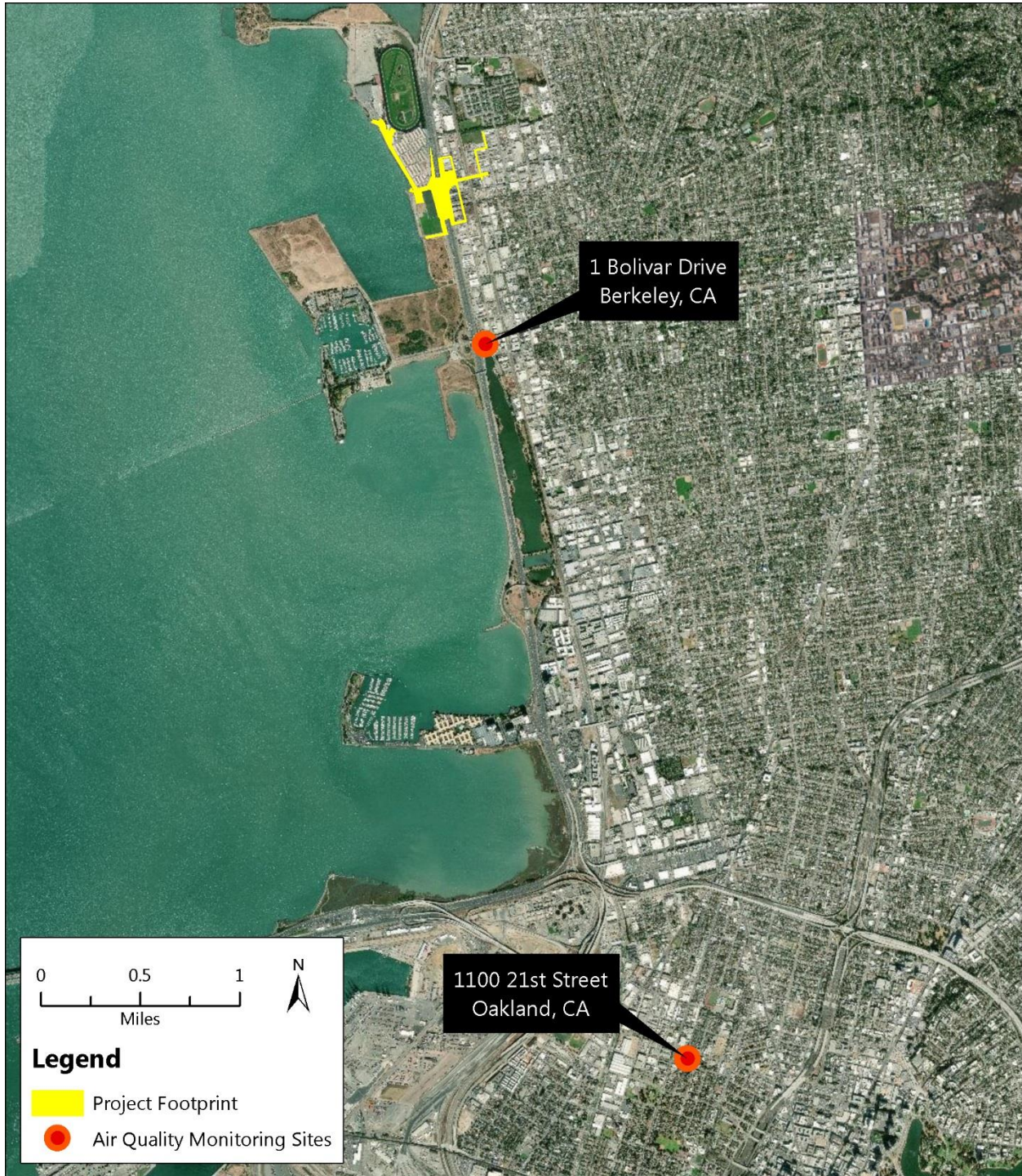


Figure 3-2. Map of Air Quality Monitoring Station Nearest to the Project



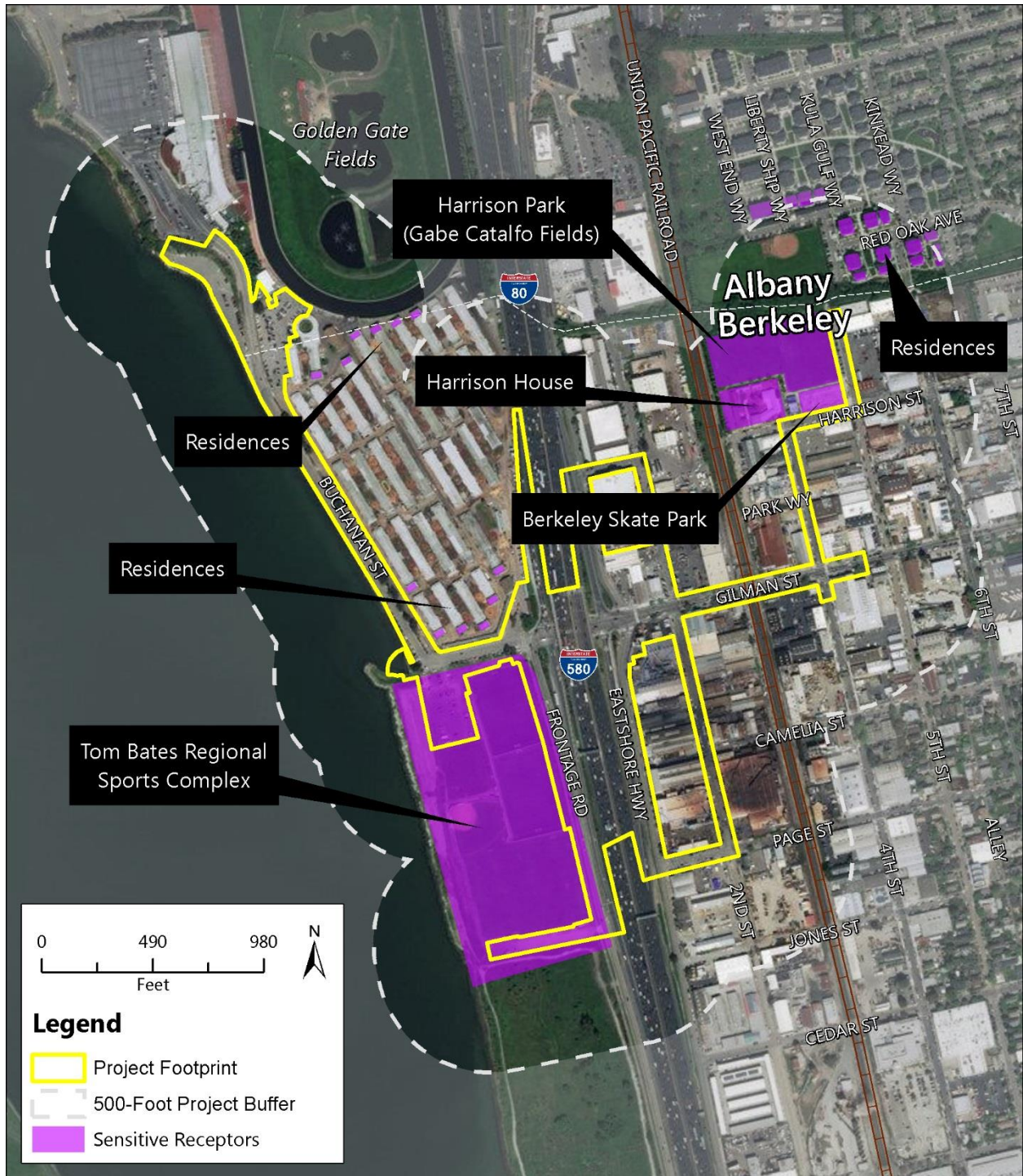
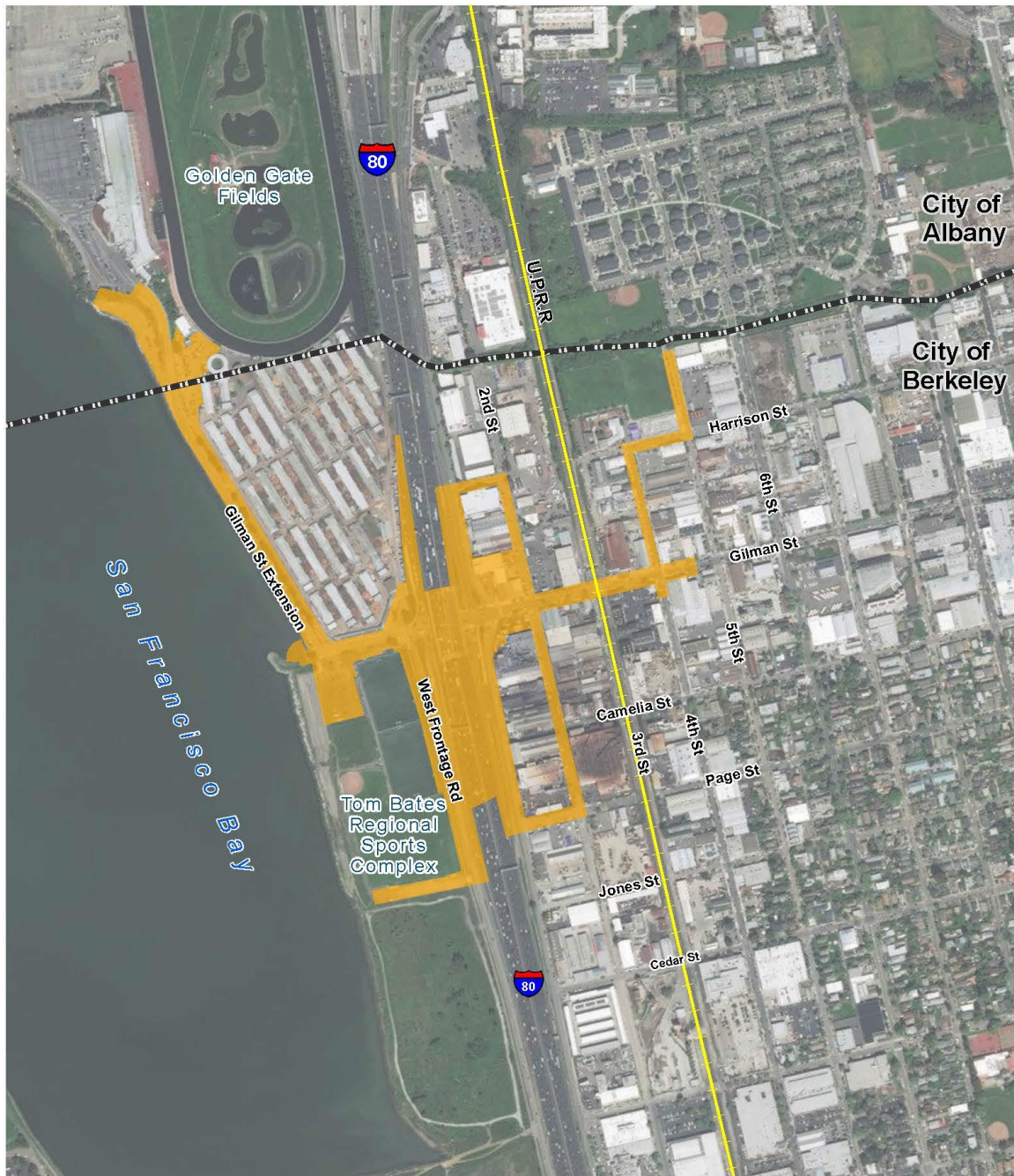


Figure 3-3. Sensitive Receptors Located Near the Proposed Project



Community Impact Assessment, August 2018



- Project Limits
- City Limits
- Rail

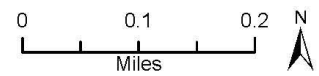


Figure 1-2: Project Location





Figure 1-3: Roundabout Alternative



The Page Intentionally Left Blank



Community Impact Assessment, August 2018

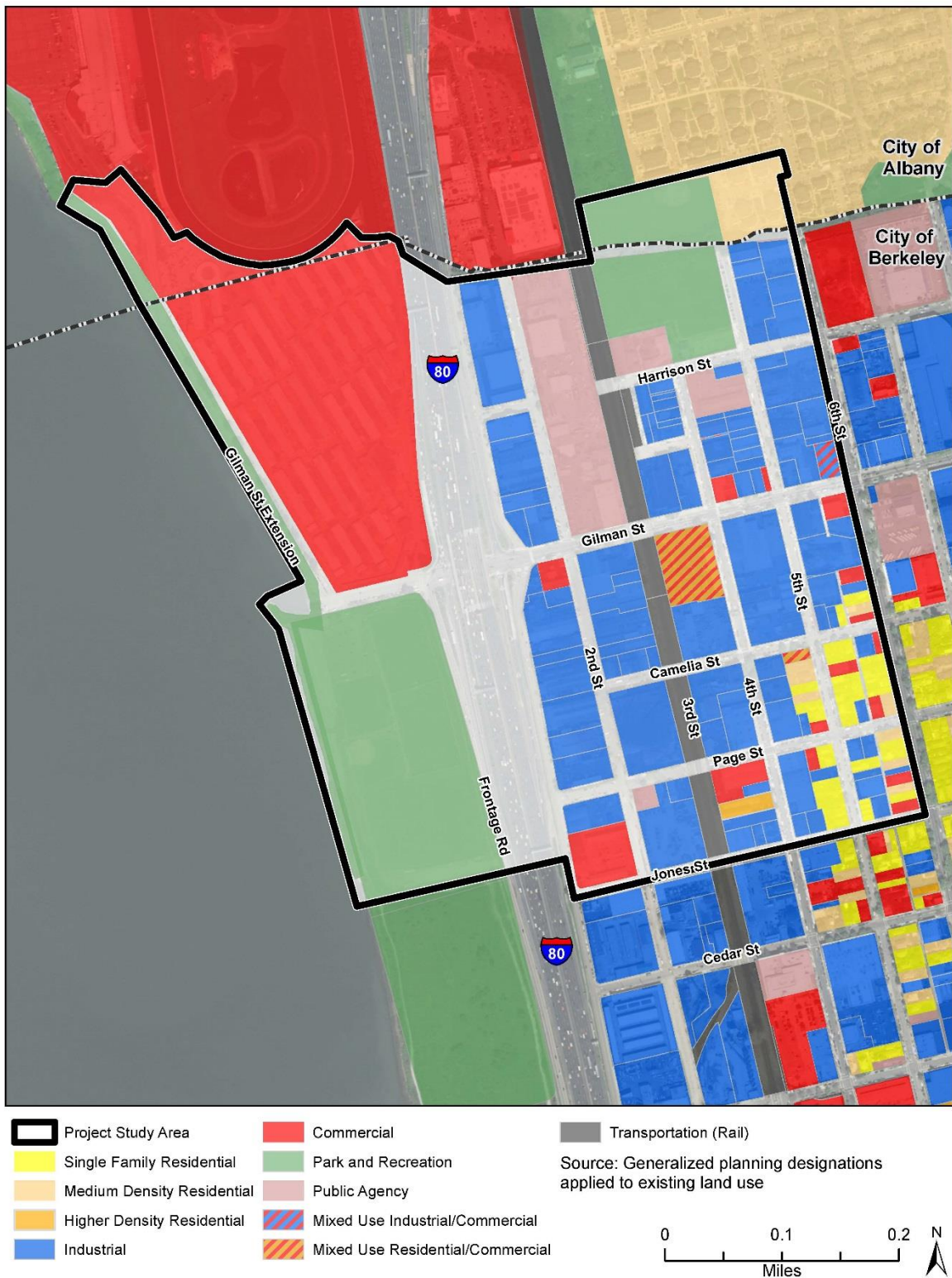


Figure 2-1: Existing Land Use

# Community Impact Assessment, August 2018



Figure 2-2: BCDC Jurisdiction and Designations



# Community Impact Assessment, August 2018

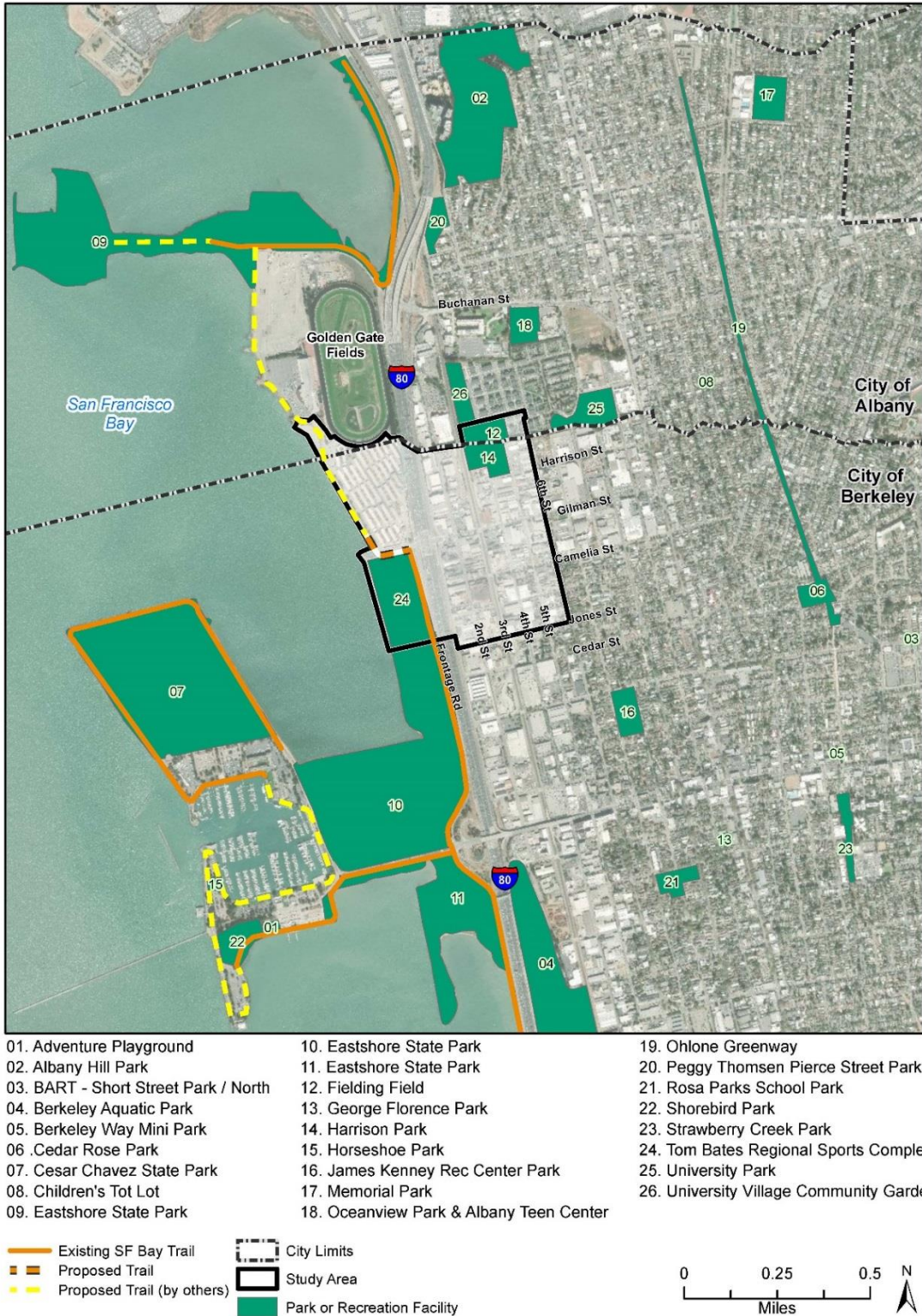


Figure 2-3: Parks and Recreational Facilities



Community Impact Assessment, August 2018

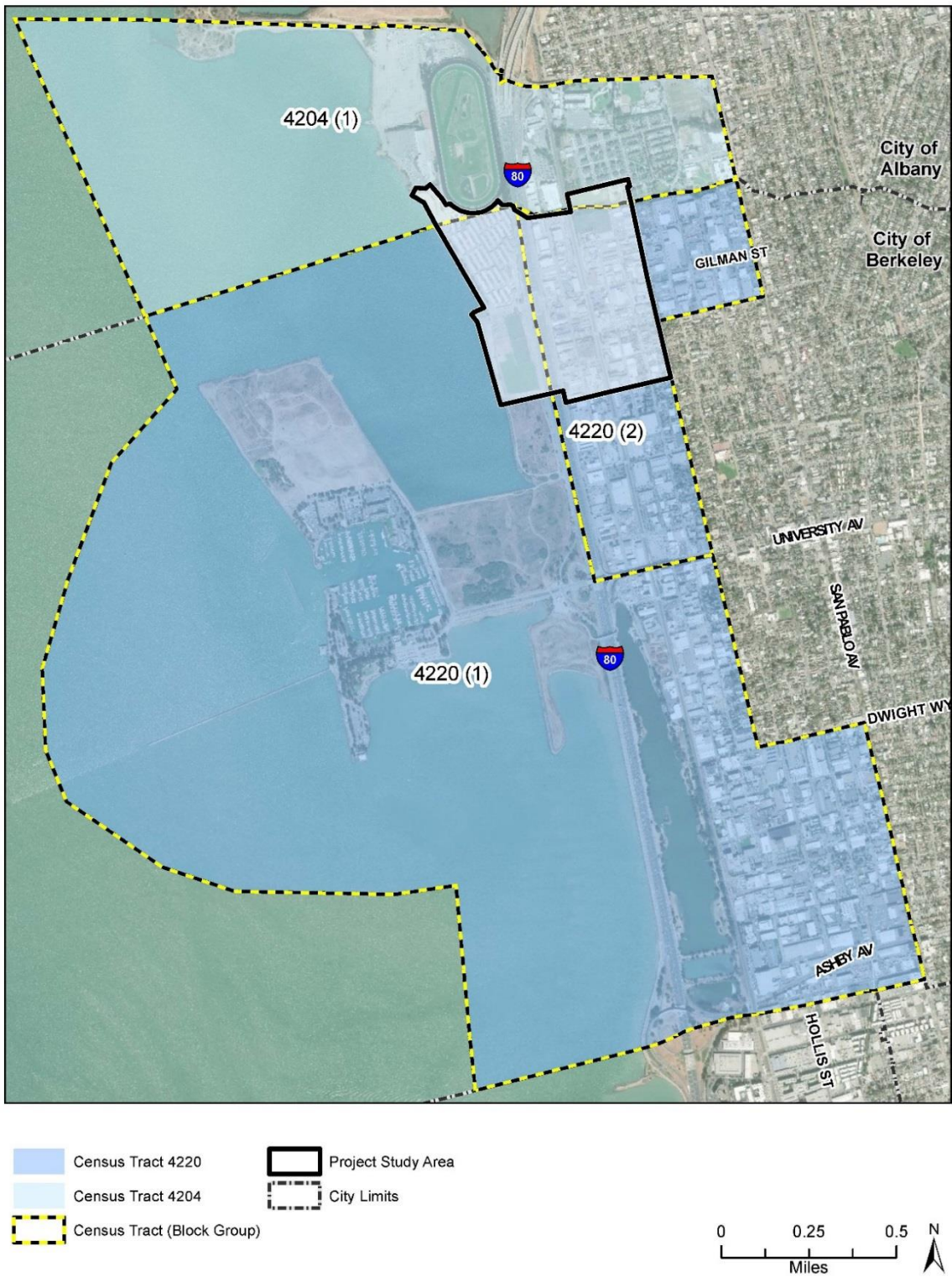


Figure 4-1: Socioeconomic Study Area



# Community Impact Assessment, August 2018

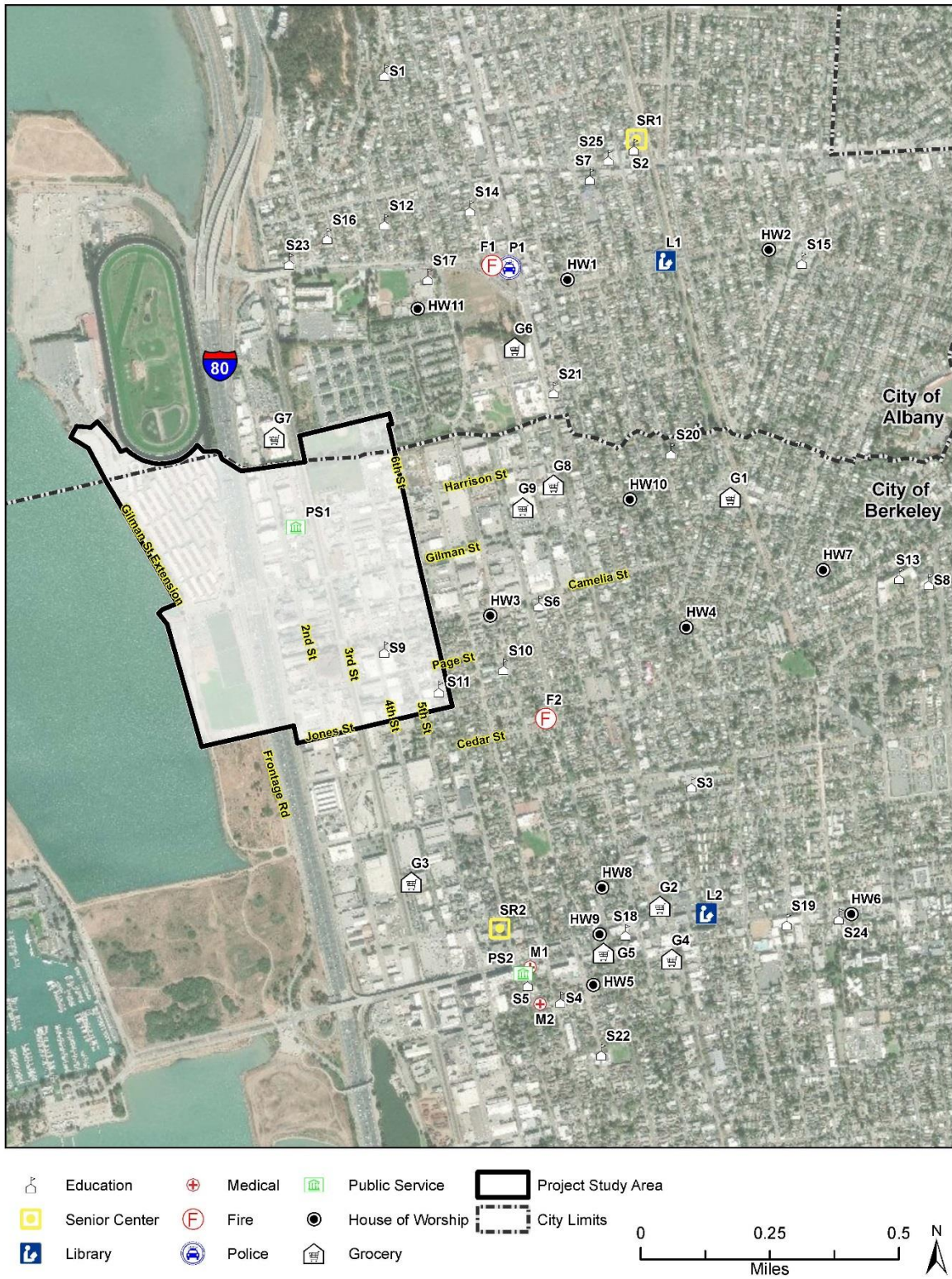


Figure 4-2: Community



# Community Impact Assessment, August 2018

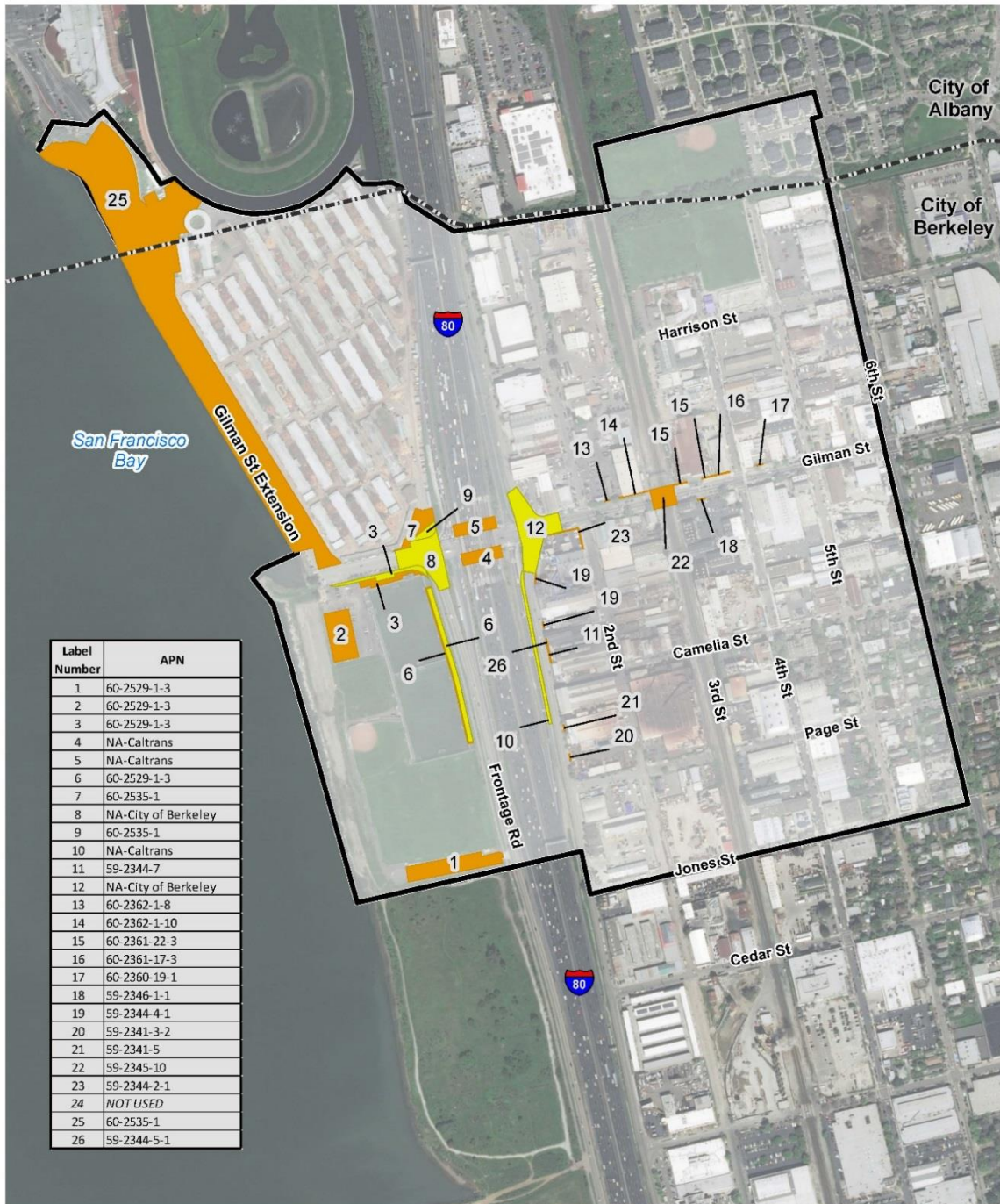


Figure 4-3: Proposed Property Acquisitions



Community Impact Assessment, August 2018

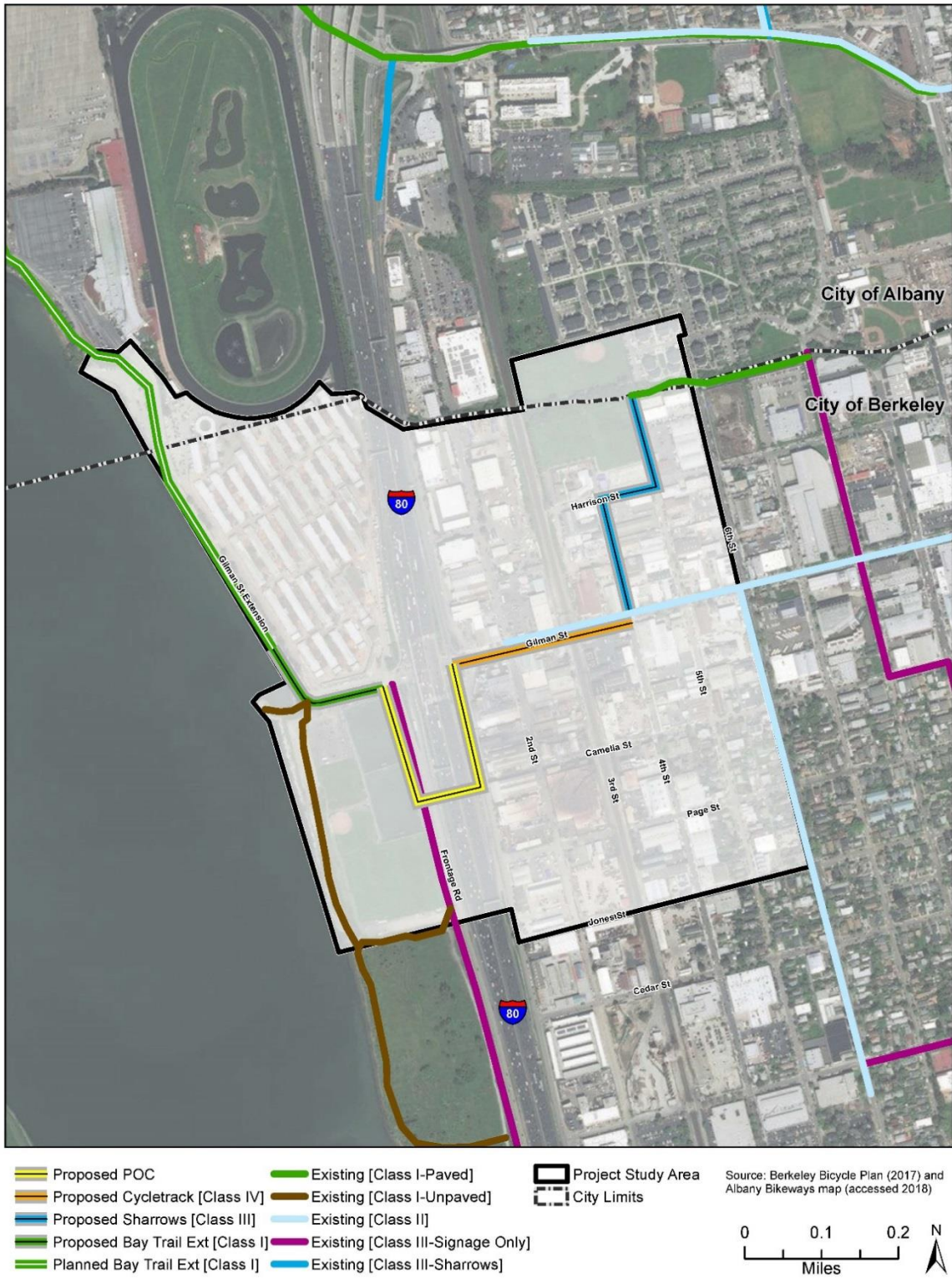
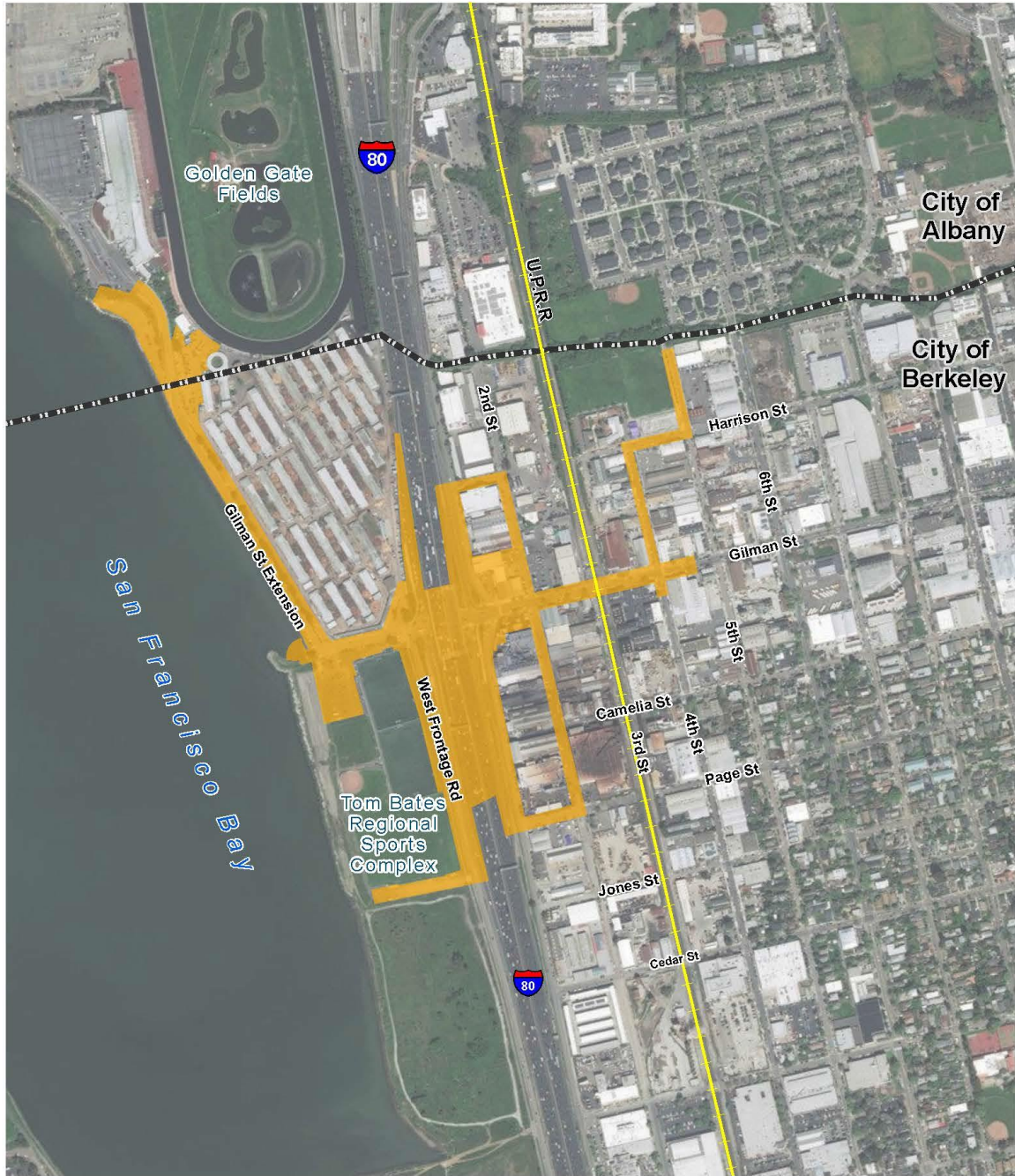


Figure 5-1: Bicycle Routes and Pedestrian Facilities

Initial Site Assessment, May 2018



-  Project Limits
-  City Limits
-  Rail

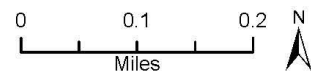


Figure 2: Project Location





Figure 3: Roundabout Alternative



The Page Intentionally Left Blank



Initial Site Assessment, May 2018

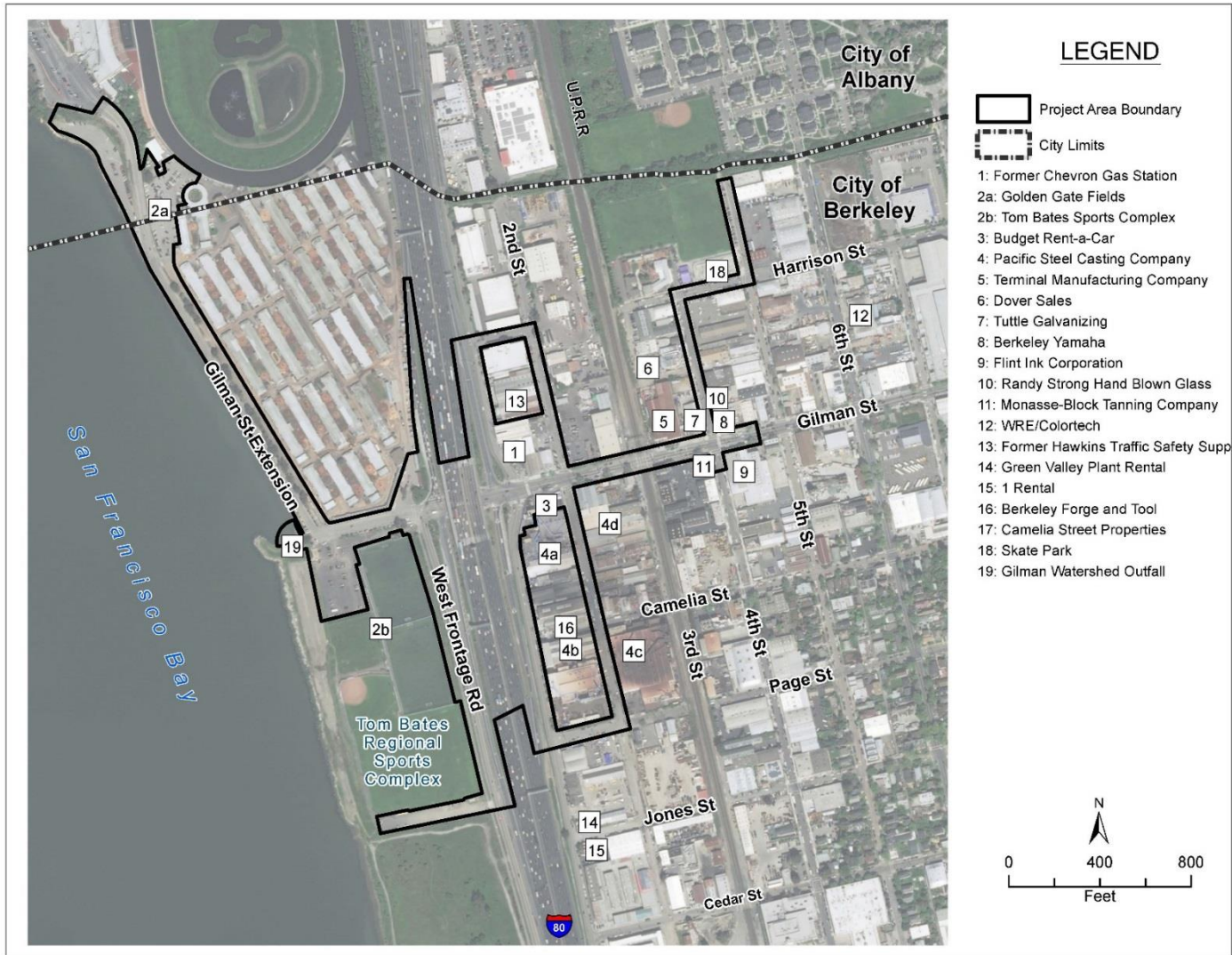


Figure 4: Site Identifier Map

Noise Abatement Decision Report, August 2018

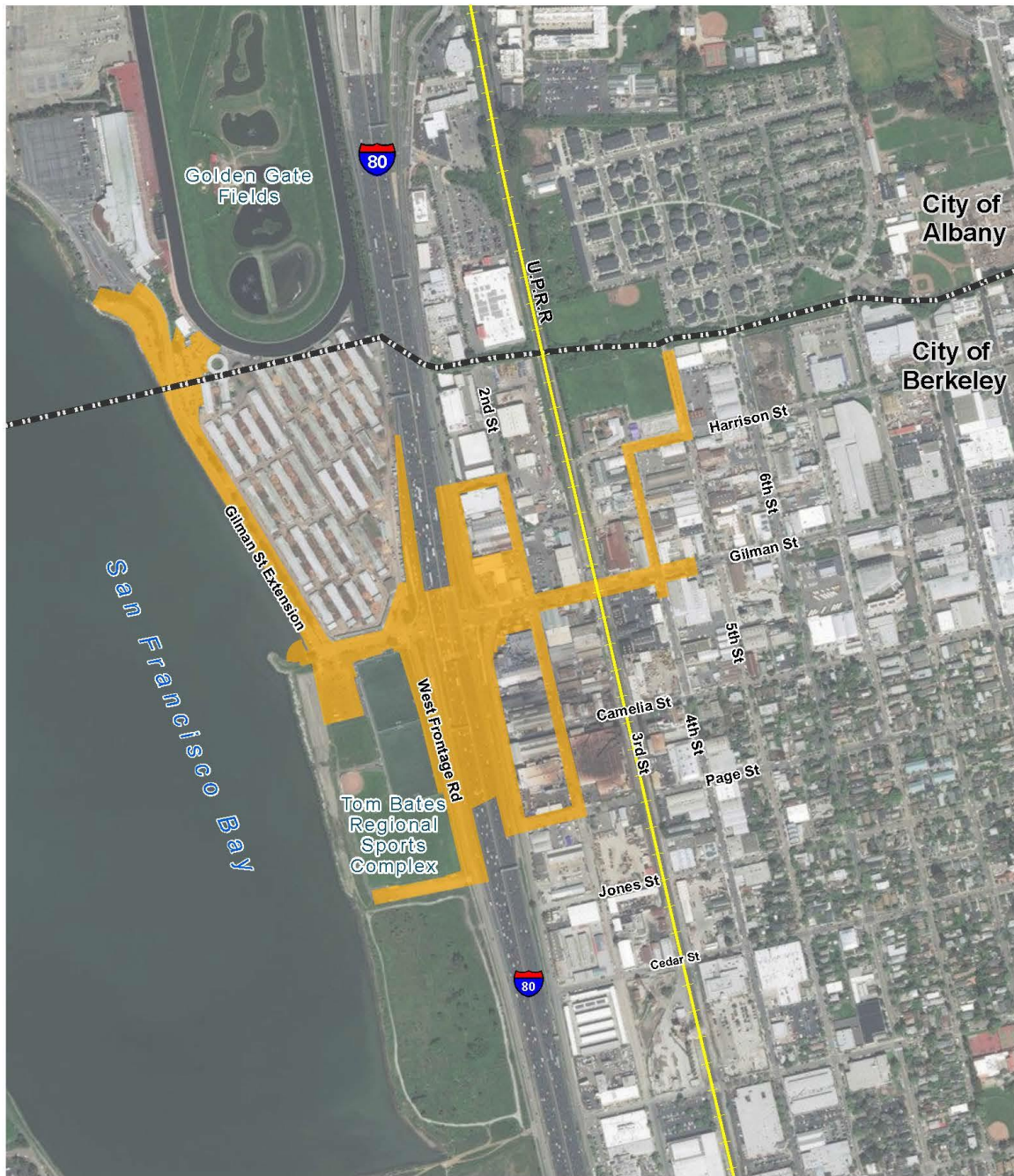
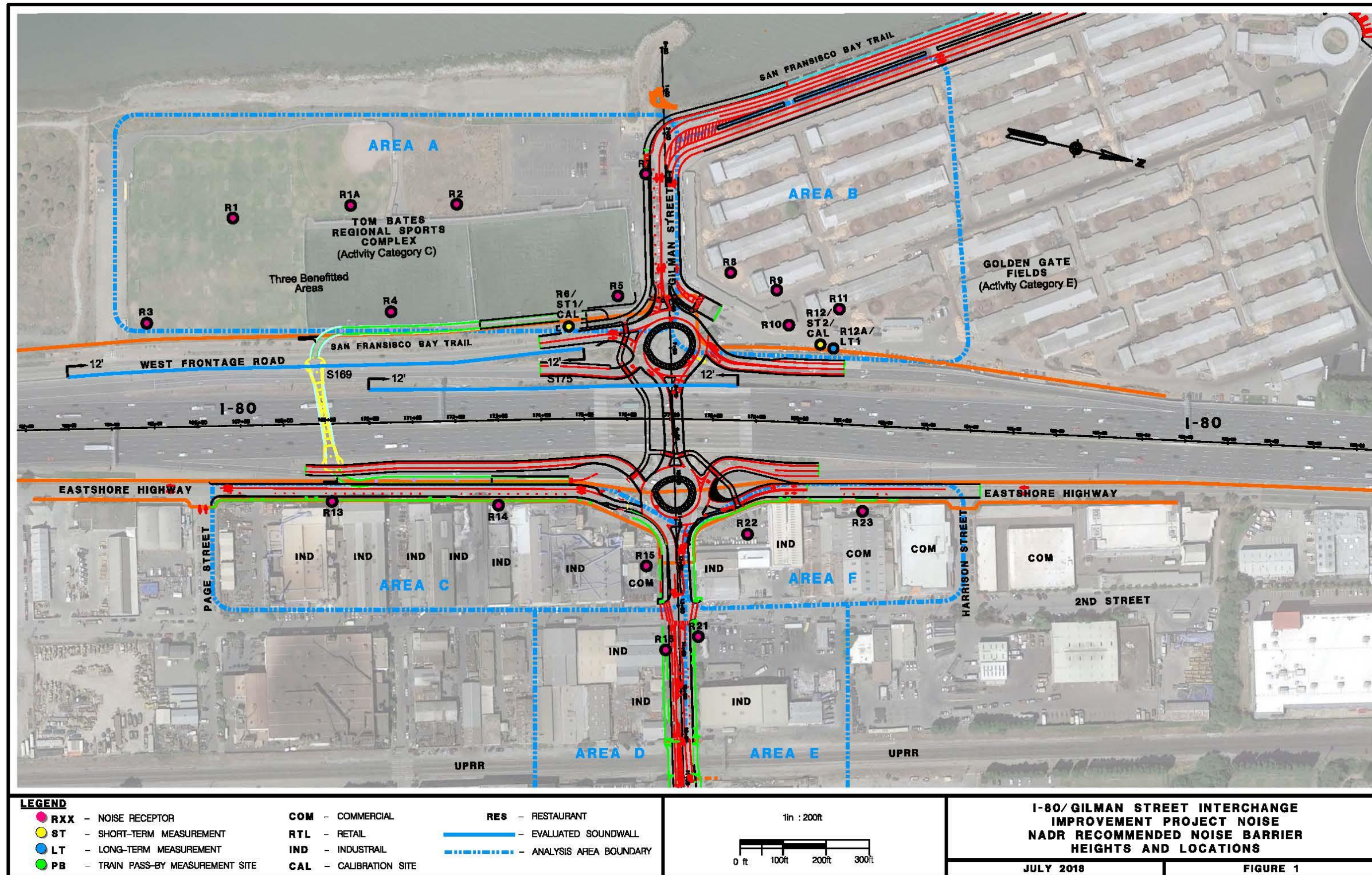


Figure 2. Project Location Map



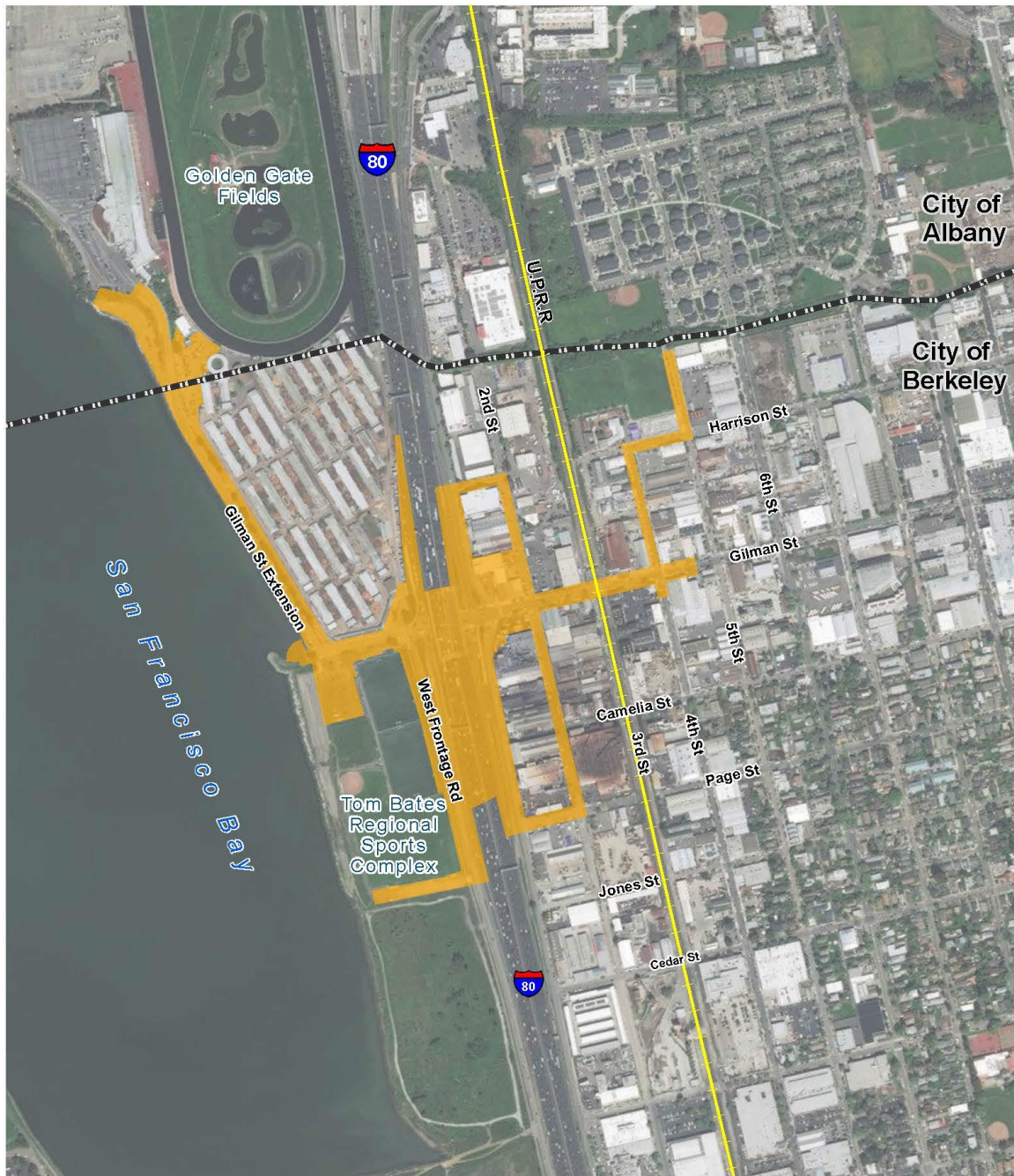


Appendix A Figure 1

The Page Intentionally Left Blank



Noise Study Report, July 2018



- Project Limits
- City Limits
- Rail

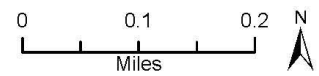
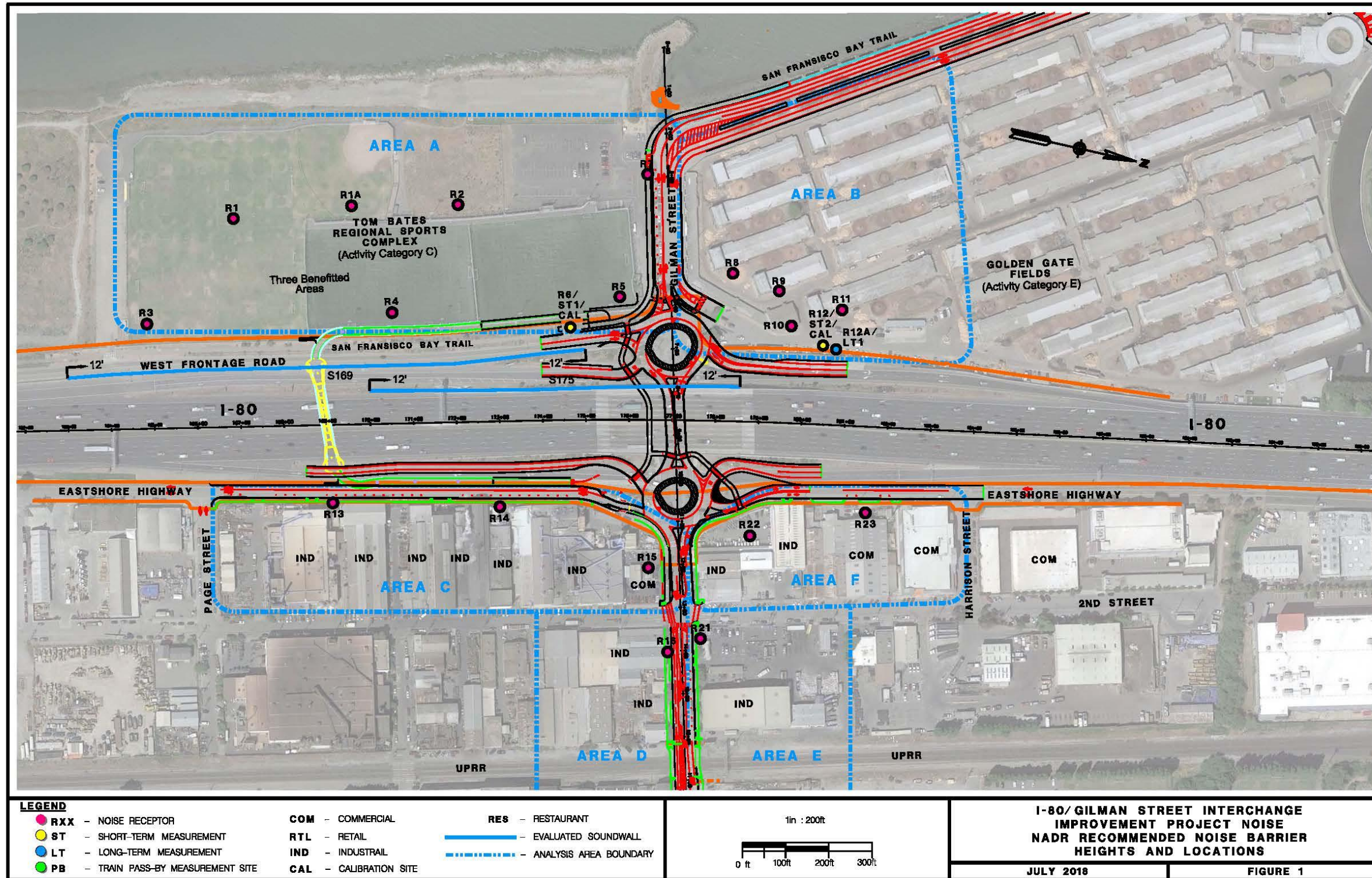


Figure 2-2. Project Location Map

The Page Intentionally Left Blank



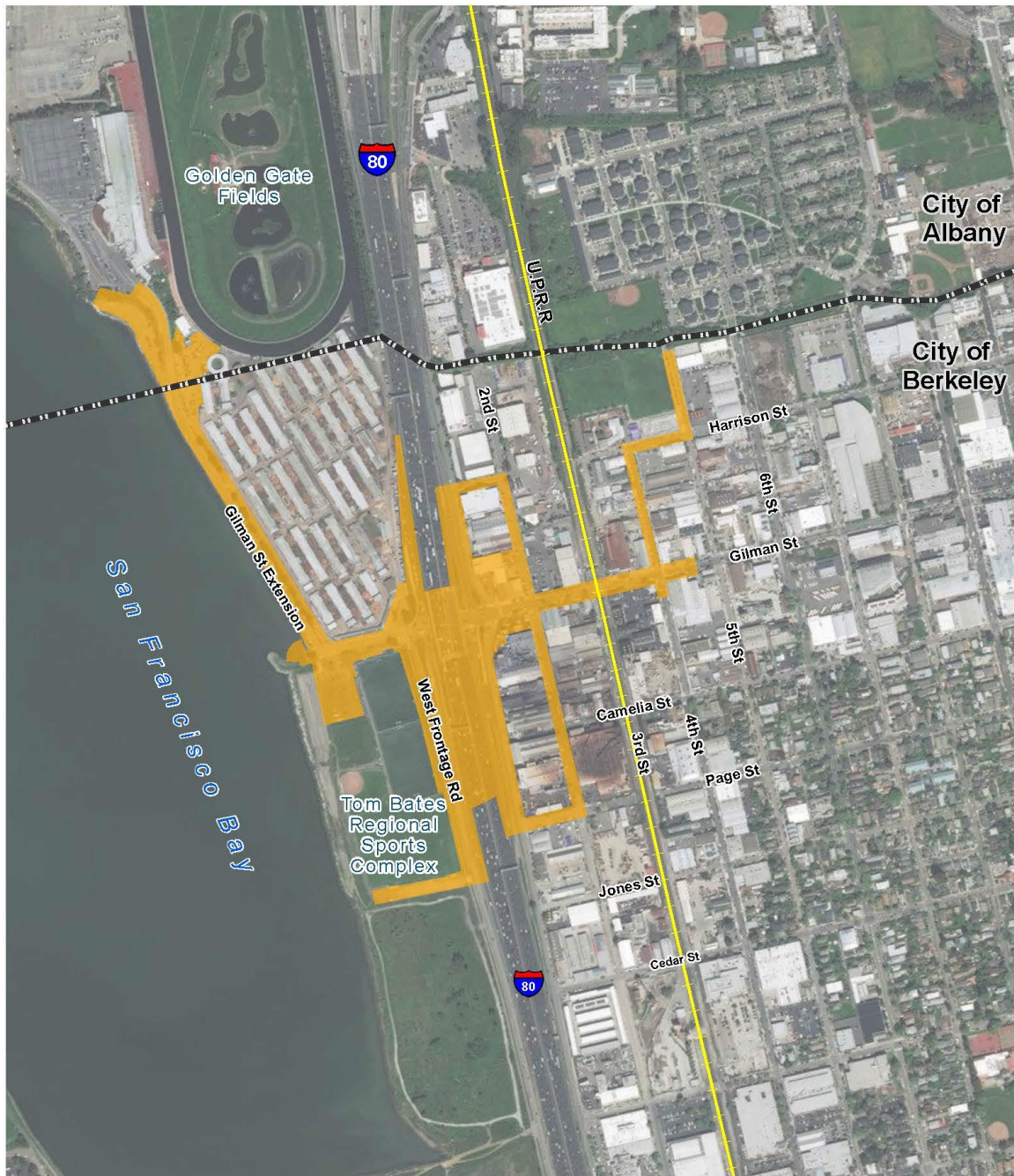


Appendix A Figure 1

The Page Intentionally Left Blank



Paleontological Identification/Evaluation Report, June 2018



-  Project Limits
-  City Limits
-  Rail

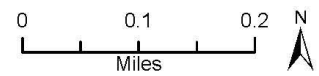


Figure 2. Project Location

The Page Intentionally Left Blank



Paleontological Identification/Evaluation Report, June 2018



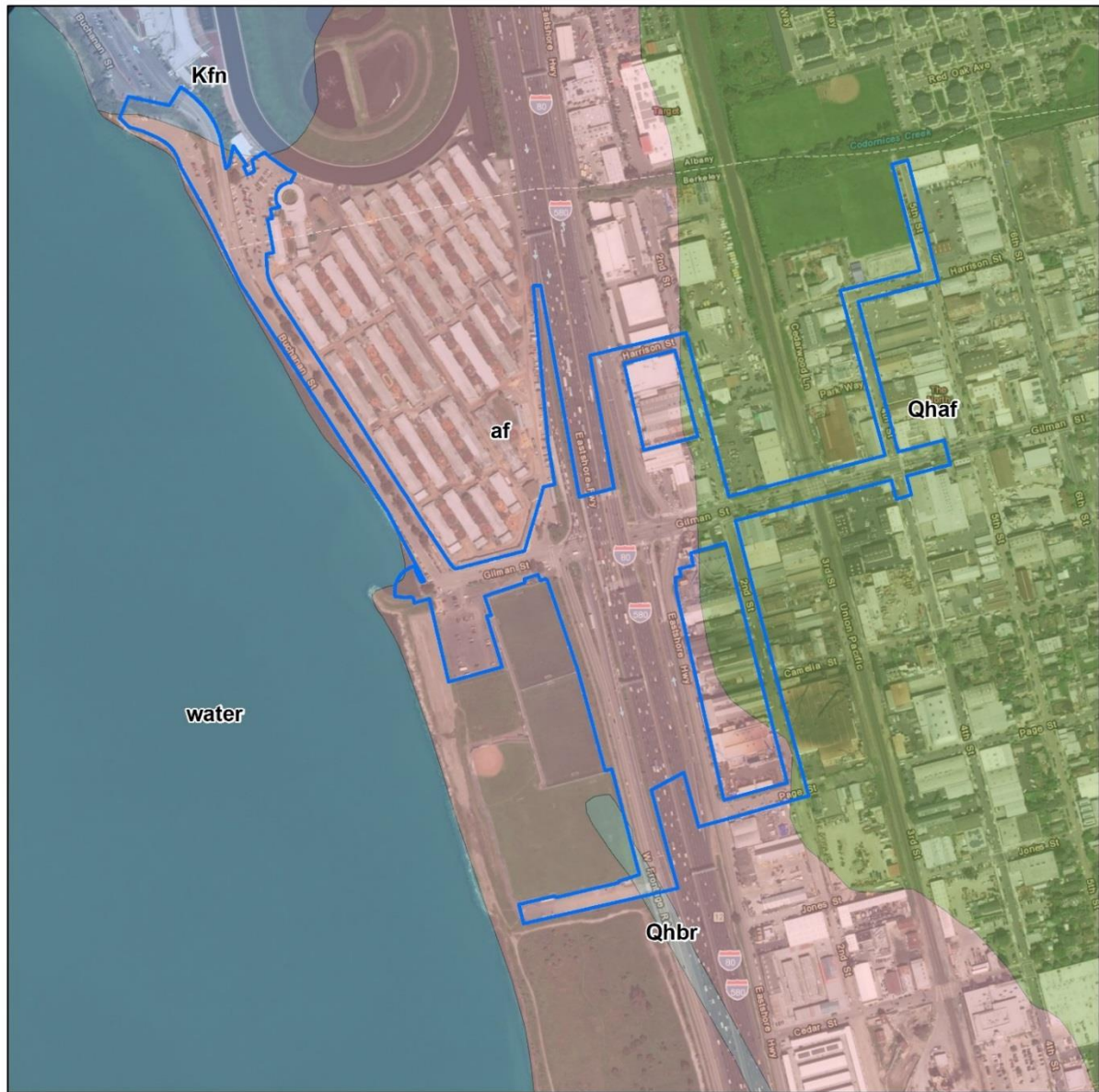
Figure 3. Roundabout Alternative



The Page Intentionally Left Blank



Paleontological Identification/Evaluation Report, June 2018



PLSS: Unsectioned (Rancho San Antonio)  
SMA: Private/Undetermined

Project Area

**Geology**

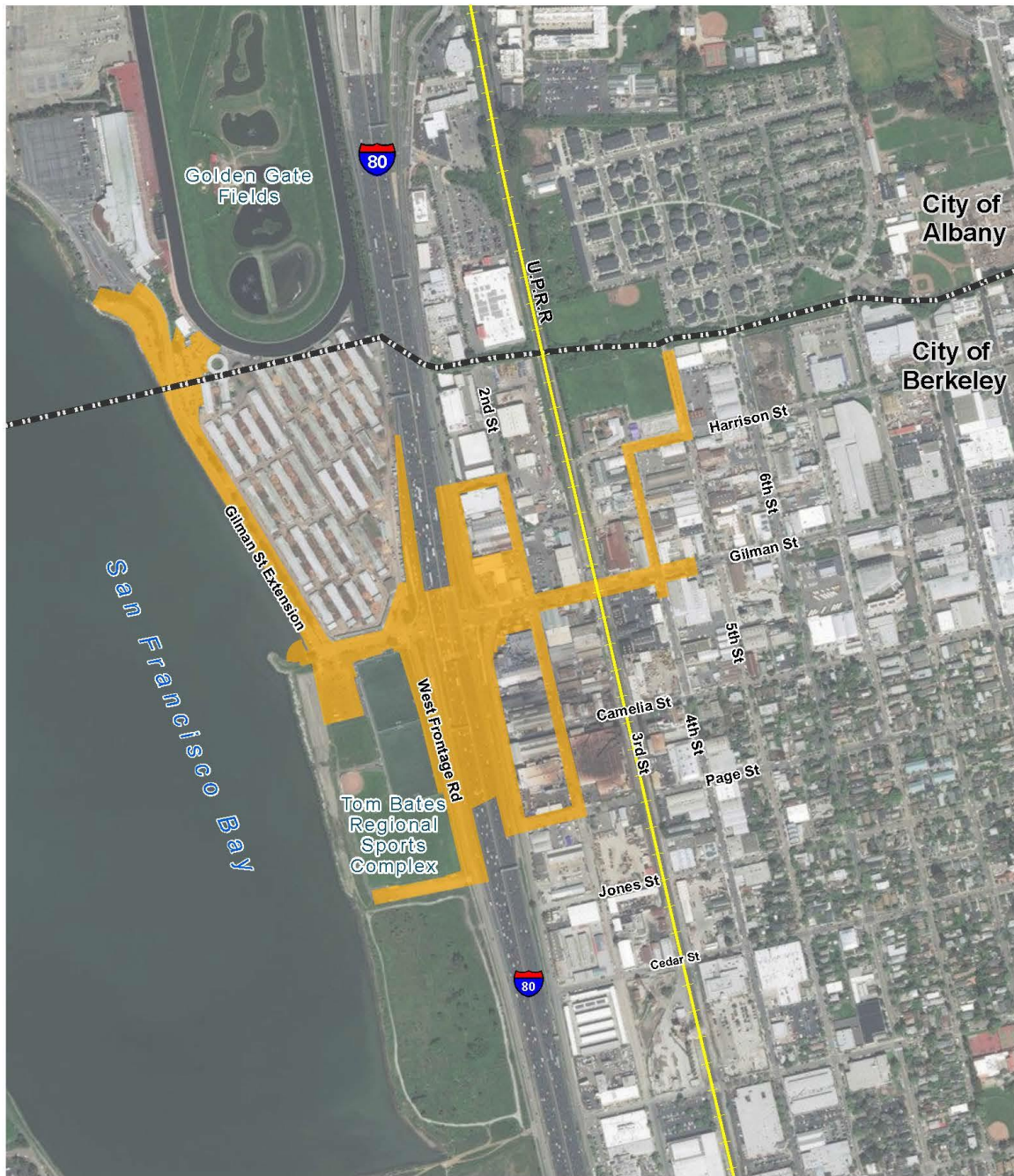
- water: San Francisco Bay (Present)
- af: artificial fill (Recent)
- Qhbr: Beach ridge deposits (Holocene)
- Qhaf: Alluvial fan and fluvial deposits (Holocene and late Pleistocene)
- Kfn: Sandstone of the Novato Quarry terrane (Late Cretaceous)

04-ALA-80  
EA 04-0A7700  
PID 0400020155  
PM 6.38/6.95

Sources: Aerial Imagery from ESRI Online  
Graymer, R.W. (2000). Geologic map and map database of the Oakland metropolitan area, Alameda, Contra Costa, and San Francisco Counties, California. USGS MF-2342. Scale 1:50,000.

Figure 4. Geologic Map

# Visual Impact Assessment



-  Project Limits
-  City Limits
-  Rail

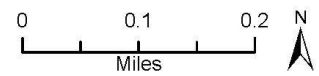
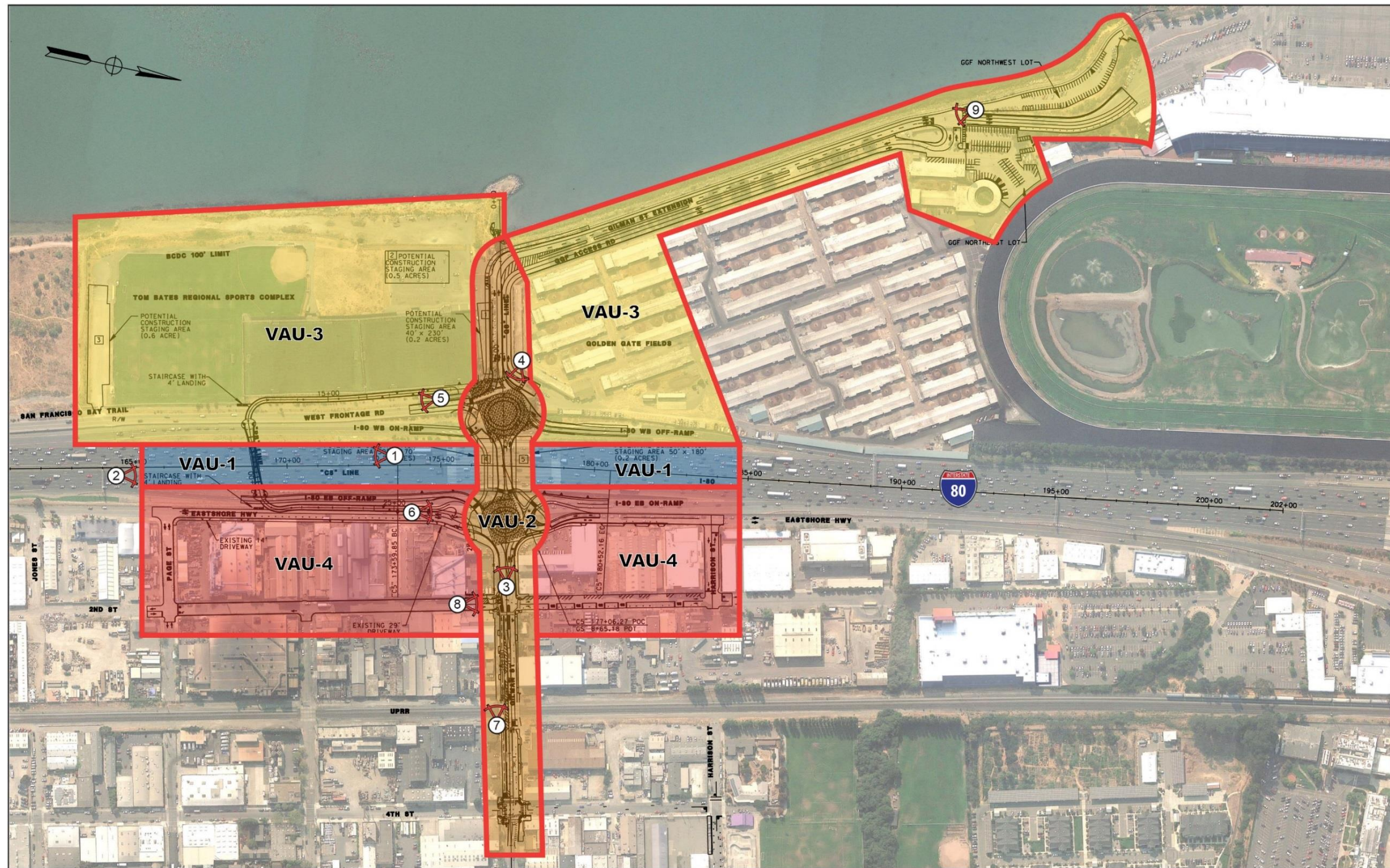


Figure 2: Project Location



# Visual Impact Assessment



**Legend:**

① Key View Point  
(see Section 8 for more information)

**VAU** - Visual Assessment Unit  
**VAU-1** - I-80  
**VAU-2** - Gilman Street  
**VAU-3** - West side sports complex, West Frontage Road, and San Francisco Bay Trail  
**VAU-4** - East side commercial, EB On & Off Ramps, and Eastshore Hwy

Figure 3: Visual Assessment Units



The Page Intentionally Left Blank