



CITY OF MENIFEE

Community Development Department

Jeff Wyman - Interim Development Director

February 23, 2017

Agua Caliente Band of Cahuilla Indians
Jeff Grubbe, Chairperson
5401 Dinah Shore Drive
Palm Springs, CA 92264

RE: Native American Consultation Request for General Plan Amendment No. 2016-287, Specific Plan No. 2016-286, Change of Zone No. 2016-288, and Tract Map No. 2016-285

Dear Native American Tribe

The City of Meniffee requests your participation in the review of General Plan Amendment No. 2016-287 (GPA 2016-287), Specific Plan No. 2016-286 (SP 2016-286), Change of Zone No. 2016-288 (CZ 2016-288), and Tract Map No. 2016-285 (TR 2016-285).

GPA 2016-287 proposes to amend the General Plan land use designation of 78.8 acres on the southwest corner of Briggs Road and Old Newport Road/Rockport Road (APNs 364-190-005 and -004) from Agriculture (AG) to Specific Plan (SP). **CZ 2016-288** proposes to change the zoning classification of 78.8 acres on the southwest corner of Briggs Road and Old Newport Road/Rockport Road (APNs 364-190-005 and -004) from Heavy Agriculture – 10 Acre Minimum (A-2-10) to Specific Plan (SP). **SP 2016-286** proposes establishment of a Specific Plan on a total 78.8 acres for 304 single-family residential lots, 20.1 acres of open space and 20.3 acres of road and easements. **TR 2016-285** (TR 37131) proposes the subdivision of 78.8 gross acres into a total of 304 single family residential lots, with 20.1 acres of trails, open space and recreation and 20.3 acres of roads, easements and other

The project site is located within the City of Meniffee. The site is bounded as follows: Old Newport Road and Tierra Shores residential development to the north, Wilderness Lakes RV Resort to the south, Briggs Road, Ramona Egg Ranch and agricultural land to the east and The Lakes residential development to the west. The project site APNs are 364-190-004 and -005.

The project site was previously used for agricultural purposes. A dairy farm was established on the site around 1981 and the dairy operation included 3,000 head of cattle. Several structures left over from the former use currently occupy the site including four residences, a workshop, and a milking building. The cattle pens were removed from the site when the dairy became inactive around 2014.

Potential impacts of the project will be analyzed in compliance with the requirements of the California Environmental Quality Act (CEQA). This project is subject to the California

Environmental Quality Act (CEQA) and Section 65352.3 of the Government Code (Senate Bill 18 [2004]).

Staff contacted the Native American Heritage Commission (NAHC) which gave the City your tribe's name. The City is seeking a consultation with your tribe concerning the potential of Native American cultural resources that may be impacted by the above project. Any information you have regarding cultural places will be kept strictly confidential and will not be divulged to the public.

The City of Menifee feels that your assistance is vital to the preservation and conservation of ancestral tribal sites during the current growth that the City is experiencing. It is the desire of the City of Menifee to protect the past and our collective heritage as we proceed towards the future. Please forward any comments or requests for meetings concerning this project to my attention by **May 24, 2017**.

Sincerely,

A handwritten signature in blue ink, reading "Ryan Fowler", is positioned above a horizontal line.

Ryan Fowler, Senior Planner

City of Menifee
Community Development Department
29714 Haun Road
Menifee, CA 92586
Phone: (951) 672-6777
Email: rfowler@cityofmenifee.us

Attachments:

USGS Map
Aerial Photograph
Tentative Tract Map



CITY OF MENIFEE

Community Development Department

Jeff Wyman - Interim Development Director

February 23, 2017

Augustine Band of Cahuilla Mission Indians
Amanda Vance, Chairperson
P.O. Box 846
Coachella, CA 92236

RE: Native American Consultation Request for General Plan Amendment No. 2016-287, Specific Plan No. 2016-286, Change of Zone No. 2016-288, and Tract Map No. 2016-285

Dear Native American Tribe

The City of Meniffee requests your participation in the review of General Plan Amendment No. 2016-287 (GPA 2016-287), Specific Plan No. 2016-286 (SP 2016-286), Change of Zone No. 2016-288 (CZ 2016-288), and Tract Map No. 2016-285 (TR 2016-285).

GPA 2016-287 proposes to amend the General Plan land use designation of 78.8 acres on the southwest corner of Briggs Road and Old Newport Road/Rockport Road (APNs 364-190-005 and -004) from Agriculture (AG) to Specific Plan (SP). **CZ 2016-288** proposes to change the zoning classification of 78.8 acres on the southwest corner of Briggs Road and Old Newport Road/Rockport Road (APNs 364-190-005 and -004) from Heavy Agriculture – 10 Acre Minimum (A-2-10) to Specific Plan (SP). **SP 2016-286** proposes establishment of a Specific Plan on a total 78.8 acres for 304 single-family residential lots, 20.1 acres of open space and 20.3 acres of road and easements. **TR 2016-285** (TR 37131) proposes the subdivision of 78.8 gross acres into a total of 304 single family residential lots, with 20.1 acres of trails, open space and recreation and 20.3 acres of roads, easements and other

The project site is located within the City of Meniffee. The site is bounded as follows: Old Newport Road and Tierra Shores residential development to the north, Wilderness Lakes RV Resort to the south, Briggs Road, Ramona Egg Ranch and agricultural land to the east and The Lakes residential development to the west. The project site APNs are 364-190-004 and -005.

The project site was previously used for agricultural purposes. A dairy farm was established on the site around 1981 and the dairy operation included 3,000 head of cattle. Several structures left over from the former use currently occupy the site including four residences, a workshop, and a milking building. The cattle pens were removed from the site when the dairy became inactive around 2014.

Potential impacts of the project will be analyzed in compliance with the requirements of the California Environmental Quality Act (CEQA). This project is subject to the California

Environmental Quality Act (CEQA) and Section 65352.3 of the Government Code (Senate Bill 18 [2004]).

Staff contacted the Native American Heritage Commission (NAHC) which gave the City your tribe's name. The City is seeking a consultation with your tribe concerning the potential of Native American cultural resources that may be impacted by the above project. Any information you have regarding cultural places will be kept strictly confidential and will not be divulged to the public.

The City of Menifee feels that your assistance is vital to the preservation and conservation of ancestral tribal sites during the current growth that the City is experiencing. It is the desire of the City of Menifee to protect the past and our collective heritage as we proceed towards the future. Please forward any comments or requests for meetings concerning this project to my attention by **May 24, 2017**.

Sincerely,



Ryan Fowler, Senior Planner

City of Menifee
Community Development Department
29714 Haun Road
Menifee, CA 92586
Phone: (951) 672-6777
Email: rfowler@cityofmenifee.us

Attachments:

USGS Map
Aerial Photograph
Tentative Tract Map



CITY OF MENIFEE

Community Development Department

Jeff Wyman - Interim Development Director

February 23, 2017

Cabazon Band of Mission Indians
Doug Welmas, Chairperson
84-245 Indio Springs Parkway
Indio, CA 92203

RE: Native American Consultation Request for General Plan Amendment No. 2016-287, Specific Plan No. 2016-286, Change of Zone No. 2016-288, and Tract Map No. 2016-285

Dear Native American Tribe

The City of Meniffee requests your participation in the review of General Plan Amendment No. 2016-287 (GPA 2016-287), Specific Plan No. 2016-286 (SP 2016-286), Change of Zone No. 2016-288 (CZ 2016-288), and Tract Map No. 2016-285 (TR 2016-285).

GPA 2016-287 proposes to amend the General Plan land use designation of 78.8 acres on the southwest corner of Briggs Road and Old Newport Road/Rockport Road (APNs 364-190-005 and -004) from Agriculture (AG) to Specific Plan (SP). **CZ 2016-288** proposes to change the zoning classification of 78.8 acres on the southwest corner of Briggs Road and Old Newport Road/Rockport Road (APNs 364-190-005 and -004) from Heavy Agriculture – 10 Acre Minimum (A-2-10) to Specific Plan (SP). **SP 2016-286** proposes establishment of a Specific Plan on a total 78.8 acres for 304 single-family residential lots, 20.1 acres of open space and 20.3 acres of road and easements. **TR 2016-285** (TR 37131) proposes the subdivision of 78.8 gross acres into a total of 304 single family residential lots, with 20.1 acres of trails, open space and recreation and 20.3 acres of roads, easements and other

The project site is located within the City of Meniffee. The site is bounded as follows: Old Newport Road and Tierra Shores residential development to the north, Wilderness Lakes RV Resort to the south, Briggs Road, Ramona Egg Ranch and agricultural land to the east and The Lakes residential development to the west. The project site APNs are 364-190-004 and -005.

The project site was previously used for agricultural purposes. A dairy farm was established on the site around 1981 and the dairy operation included 3,000 head of cattle. Several structures left over from the former use currently occupy the site including four residences, a workshop, and a milking building. The cattle pens were removed from the site when the dairy became inactive around 2014.

Potential impacts of the project will be analyzed in compliance with the requirements of the California Environmental Quality Act (CEQA). This project is subject to the California

Environmental Quality Act (CEQA) and Section 65352.3 of the Government Code (Senate Bill 18 [2004]).

Staff contacted the Native American Heritage Commission (NAHC) which gave the City your tribe's name. The City is seeking a consultation with your tribe concerning the potential of Native American cultural resources that may be impacted by the above project. Any information you have regarding cultural places will be kept strictly confidential and will not be divulged to the public.

The City of Menifee feels that your assistance is vital to the preservation and conservation of ancestral tribal sites during the current growth that the City is experiencing. It is the desire of the City of Menifee to protect the past and our collective heritage as we proceed towards the future. Please forward any comments or requests for meetings concerning this project to my attention by **May 24, 2017**.

Sincerely,



Ryan Fowler, Senior Planner

City of Menifee
Community Development Department
29714 Haun Road
Menifee, CA 92586
Phone: (951) 672-6777
Email: rfowler@cityofmenifee.us

Attachments:

USGS Map
Aerial Photograph
Tentative Tract Map



CITY OF MENIFEE

Community Development Department

Jeff Wyman - Interim Development Director

February 23, 2017

Cahuilla Band of Indians
Luther Salgado, Chairperson
52701 U.S. Highway 371
Anza, CA 92539

RE: Native American Consultation Request for General Plan Amendment No. 2016-287, Specific Plan No. 2016-286, Change of Zone No. 2016-288, and Tract Map No. 2016-285

Dear Native American Tribe

The City of Meniffee requests your participation in the review of General Plan Amendment No. 2016-287 (GPA 2016-287), Specific Plan No. 2016-286 (SP 2016-286), Change of Zone No. 2016-288 (CZ 2016-288), and Tract Map No. 2016-285 (TR 2016-285).

GPA 2016-287 proposes to amend the General Plan land use designation of 78.8 acres on the southwest corner of Briggs Road and Old Newport Road/Rockport Road (APNs 364-190-005 and -004) from Agriculture (AG) to Specific Plan (SP). **CZ 2016-288** proposes to change the zoning classification of 78.8 acres on the southwest corner of Briggs Road and Old Newport Road/Rockport Road (APNs 364-190-005 and -004) from Heavy Agriculture – 10 Acre Minimum (A-2-10) to Specific Plan (SP). **SP 2016-286** proposes establishment of a Specific Plan on a total 78.8 acres for 304 single-family residential lots, 20.1 acres of open space and 20.3 acres of road and easements. **TR 2016-285** (TR 37131) proposes the subdivision of 78.8 gross acres into a total of 304 single family residential lots, with 20.1 acres of trails, open space and recreation and 20.3 acres of roads, easements and other

The project site is located within the City of Meniffee. The site is bounded as follows: Old Newport Road and Tierra Shores residential development to the north, Wilderness Lakes RV Resort to the south, Briggs Road, Ramona Egg Ranch and agricultural land to the east and The Lakes residential development to the west. The project site APNs are 364-190-004 and -005.

The project site was previously used for agricultural purposes. A dairy farm was established on the site around 1981 and the dairy operation included 3,000 head of cattle. Several structures left over from the former use currently occupy the site including four residences, a workshop, and a milking building. The cattle pens were removed from the site when the dairy became inactive around 2014.

Potential impacts of the project will be analyzed in compliance with the requirements of the California Environmental Quality Act (CEQA). This project is subject to the California

Environmental Quality Act (CEQA) and Section 65352.3 of the Government Code (Senate Bill 18 [2004]).

Staff contacted the Native American Heritage Commission (NAHC) which gave the City your tribe's name. The City is seeking a consultation with your tribe concerning the potential of Native American cultural resources that may be impacted by the above project. Any information you have regarding cultural places will be kept strictly confidential and will not be divulged to the public.

The City of Menifee feels that your assistance is vital to the preservation and conservation of ancestral tribal sites during the current growth that the City is experiencing. It is the desire of the City of Menifee to protect the past and our collective heritage as we proceed towards the future. Please forward any comments or requests for meetings concerning this project to my attention by **May 24, 2017**.

Sincerely,



Ryan Fowler, Senior Planner

City of Menifee
Community Development Department
29714 Haun Road
Menifee, CA 92586
Phone: (951) 672-6777
Email: rfowler@cityofmenifee.us

Attachments:

USGS Map
Aerial Photograph
Tentative Tract Map



CITY OF MENIFEE

Community Development Department

Jeff Wyman - Interim Development Director

February 23, 2017

La Jolla Band of Luiseño Indians
Thomas Rodriguez, Chairperson
22000 Highway 76
Pauma Valley, CA 92061

RE: Native American Consultation Request for General Plan Amendment No. 2016-287, Specific Plan No. 2016-286, Change of Zone No. 2016-288, and Tract Map No. 2016-285

Dear Native American Tribe

The City of Meniffee requests your participation in the review of General Plan Amendment No. 2016-287 (GPA 2016-287), Specific Plan No. 2016-286 (SP 2016-286), Change of Zone No. 2016-288 (CZ 2016-288), and Tract Map No. 2016-285 (TR 2016-285).

GPA 2016-287 proposes to amend the General Plan land use designation of 78.8 acres on the southwest corner of Briggs Road and Old Newport Road/Rockport Road (APNs 364-190-005 and -004) from Agriculture (AG) to Specific Plan (SP). **CZ 2016-288** proposes to change the zoning classification of 78.8 acres on the southwest corner of Briggs Road and Old Newport Road/Rockport Road (APNs 364-190-005 and -004) from Heavy Agriculture – 10 Acre Minimum (A-2-10) to Specific Plan (SP). **SP 2016-286** proposes establishment of a Specific Plan on a total 78.8 acres for 304 single-family residential lots, 20.1 acres of open space and 20.3 acres of road and easements. **TR 2016-285** (TR 37131) proposes the subdivision of 78.8 gross acres into a total of 304 single family residential lots, with 20.1 acres of trails, open space and recreation and 20.3 acres of roads, easements and other

The project site is located within the City of Meniffee. The site is bounded as follows: Old Newport Road and Tierra Shores residential development to the north, Wilderness Lakes RV Resort to the south, Briggs Road, Ramona Egg Ranch and agricultural land to the east and The Lakes residential development to the west. The project site APNs are 364-190-004 and -005.

The project site was previously used for agricultural purposes. A dairy farm was established on the site around 1981 and the dairy operation included 3,000 head of cattle. Several structures left over from the former use currently occupy the site including four residences, a workshop, and a milking building. The cattle pens were removed from the site when the dairy became inactive around 2014.

Potential impacts of the project will be analyzed in compliance with the requirements of the California Environmental Quality Act (CEQA). This project is subject to the California

Environmental Quality Act (CEQA) and Section 65352.3 of the Government Code (Senate Bill 18 [2004]).

Staff contacted the Native American Heritage Commission (NAHC) which gave the City your tribe's name. The City is seeking a consultation with your tribe concerning the potential of Native American cultural resources that may be impacted by the above project. Any information you have regarding cultural places will be kept strictly confidential and will not be divulged to the public.

The City of Menifee feels that your assistance is vital to the preservation and conservation of ancestral tribal sites during the current growth that the City is experiencing. It is the desire of the City of Menifee to protect the past and our collective heritage as we proceed towards the future. Please forward any comments or requests for meetings concerning this project to my attention by **May 24, 2017**.

Sincerely,



Ryan Fowler, Senior Planner

City of Menifee
Community Development Department
29714 Haun Road
Menifee, CA 92586
Phone: (951) 672-6777
Email: rfowler@cityofmenifee.us

Attachments:

USGS Map
Aerial Photograph
Tentative Tract Map



CITY OF MENIFEE

Community Development Department

Jeff Wyman - Interim Development Director

February 23, 2017

Los Coyotes Band of Mission Indians
Shane Chapparosa, Chairperson
P.O. Box 189
Warner Springs, CA 92086-0189

RE: Native American Consultation Request for General Plan Amendment No. 2016-287, Specific Plan No. 2016-286, Change of Zone No. 2016-288, and Tract Map No. 2016-285

Dear Native American Tribe

The City of Meniffee requests your participation in the review of General Plan Amendment No. 2016-287 (GPA 2016-287), Specific Plan No. 2016-286 (SP 2016-286), Change of Zone No. 2016-288 (CZ 2016-288), and Tract Map No. 2016-285 (TR 2016-285).

GPA 2016-287 proposes to amend the General Plan land use designation of 78.8 acres on the southwest corner of Briggs Road and Old Newport Road/Rockport Road (APNs 364-190-005 and -004) from Agriculture (AG) to Specific Plan (SP). **CZ 2016-288** proposes to change the zoning classification of 78.8 acres on the southwest corner of Briggs Road and Old Newport Road/Rockport Road (APNs 364-190-005 and -004) from Heavy Agriculture – 10 Acre Minimum (A-2-10) to Specific Plan (SP). **SP 2016-286** proposes establishment of a Specific Plan on a total 78.8 acres for 304 single-family residential lots, 20.1 acres of open space and 20.3 acres of road and easements. **TR 2016-285** (TR 37131) proposes the subdivision of 78.8 gross acres into a total of 304 single family residential lots, with 20.1 acres of trails, open space and recreation and 20.3 acres of roads, easements and other

The project site is located within the City of Meniffee. The site is bounded as follows: Old Newport Road and Tierra Shores residential development to the north, Wilderness Lakes RV Resort to the south, Briggs Road, Ramona Egg Ranch and agricultural land to the east and The Lakes residential development to the west. The project site APNs are 364-190-004 and -005.

The project site was previously used for agricultural purposes. A dairy farm was established on the site around 1981 and the dairy operation included 3,000 head of cattle. Several structures left over from the former use currently occupy the site including four residences, a workshop, and a milking building. The cattle pens were removed from the site when the dairy became inactive around 2014.

Potential impacts of the project will be analyzed in compliance with the requirements of the California Environmental Quality Act (CEQA). This project is subject to the California

Environmental Quality Act (CEQA) and Section 65352.3 of the Government Code (Senate Bill 18 [2004]).

Staff contacted the Native American Heritage Commission (NAHC) which gave the City your tribe's name. The City is seeking a consultation with your tribe concerning the potential of Native American cultural resources that may be impacted by the above project. Any information you have regarding cultural places will be kept strictly confidential and will not be divulged to the public.

The City of Menifee feels that your assistance is vital to the preservation and conservation of ancestral tribal sites during the current growth that the City is experiencing. It is the desire of the City of Menifee to protect the past and our collective heritage as we proceed towards the future. Please forward any comments or requests for meetings concerning this project to my attention by **May 24, 2017**.

Sincerely,



Ryan Fowler, Senior Planner

City of Menifee
Community Development Department
29714 Haun Road
Menifee, CA 92586
Phone: (951) 672-6777
Email: rfowler@cityofmenifee.us

Attachments:

USGS Map
Aerial Photograph
Tentative Tract Map



CITY OF MENIFEE

Community Development Department

Jeff Wyman - Interim Development Director

February 23, 2017

Morongo Band of Mission Indians
Robert Martin, Chairperson
12700 Pumarra Road
Banning, CA 92220

RE: Native American Consultation Request for General Plan Amendment No. 2016-287, Specific Plan No. 2016-286, Change of Zone No. 2016-288, and Tract Map No. 2016-285

Dear Native American Tribe

The City of Meniffee requests your participation in the review of General Plan Amendment No. 2016-287 (GPA 2016-287), Specific Plan No. 2016-286 (SP 2016-286), Change of Zone No. 2016-288 (CZ 2016-288), and Tract Map No. 2016-285 (TR 2016-285).

GPA 2016-287 proposes to amend the General Plan land use designation of 78.8 acres on the southwest corner of Briggs Road and Old Newport Road/Rockport Road (APNs 364-190-005 and -004) from Agriculture (AG) to Specific Plan (SP). **CZ 2016-288** proposes to change the zoning classification of 78.8 acres on the southwest corner of Briggs Road and Old Newport Road/Rockport Road (APNs 364-190-005 and -004) from Heavy Agriculture – 10 Acre Minimum (A-2-10) to Specific Plan (SP). **SP 2016-286** proposes establishment of a Specific Plan on a total 78.8 acres for 304 single-family residential lots, 20.1 acres of open space and 20.3 acres of road and easements. **TR 2016-285** (TR 37131) proposes the subdivision of 78.8 gross acres into a total of 304 single family residential lots, with 20.1 acres of trails, open space and recreation and 20.3 acres of roads, easements and other

The project site is located within the City of Meniffee. The site is bounded as follows: Old Newport Road and Tierra Shores residential development to the north, Wilderness Lakes RV Resort to the south, Briggs Road, Ramona Egg Ranch and agricultural land to the east and The Lakes residential development to the west. The project site APNs are 364-190-004 and -005.

The project site was previously used for agricultural purposes. A dairy farm was established on the site around 1981 and the dairy operation included 3,000 head of cattle. Several structures left over from the former use currently occupy the site including four residences, a workshop, and a milking building. The cattle pens were removed from the site when the dairy became inactive around 2014.

Potential impacts of the project will be analyzed in compliance with the requirements of the California Environmental Quality Act (CEQA). This project is subject to the California

Environmental Quality Act (CEQA) and Section 65352.3 of the Government Code (Senate Bill 18 [2004]).

Staff contacted the Native American Heritage Commission (NAHC) which gave the City your tribe's name. The City is seeking a consultation with your tribe concerning the potential of Native American cultural resources that may be impacted by the above project. Any information you have regarding cultural places will be kept strictly confidential and will not be divulged to the public.

The City of Menifee feels that your assistance is vital to the preservation and conservation of ancestral tribal sites during the current growth that the City is experiencing. It is the desire of the City of Menifee to protect the past and our collective heritage as we proceed towards the future. Please forward any comments or requests for meetings concerning this project to my attention by **May 24, 2017**.

Sincerely,



Ryan Fowler, Senior Planner

City of Menifee
Community Development Department
29714 Haun Road
Menifee, CA 92586
Phone: (951) 672-6777
Email: rfowler@cityofmenifee.us

Attachments:

USGS Map
Aerial Photograph
Tentative Tract Map



CITY OF MENIFEE

Community Development Department

Jeff Wyman - Interim Development Director

February 23, 2017

Pala Band of Mission Indians
Robert Smith, Chairperson
12196 Pala Mission Road
Pala, CA 92059

RE: Native American Consultation Request for General Plan Amendment No. 2016-287, Specific Plan No. 2016-286, Change of Zone No. 2016-288, and Tract Map No. 2016-285

Dear Native American Tribe

The City of Meniffee requests your participation in the review of General Plan Amendment No. 2016-287 (GPA 2016-287), Specific Plan No. 2016-286 (SP 2016-286), Change of Zone No. 2016-288 (CZ 2016-288), and Tract Map No. 2016-285 (TR 2016-285).

GPA 2016-287 proposes to amend the General Plan land use designation of 78.8 acres on the southwest corner of Briggs Road and Old Newport Road/Rockport Road (APNs 364-190-005 and -004) from Agriculture (AG) to Specific Plan (SP). **CZ 2016-288** proposes to change the zoning classification of 78.8 acres on the southwest corner of Briggs Road and Old Newport Road/Rockport Road (APNs 364-190-005 and -004) from Heavy Agriculture – 10 Acre Minimum (A-2-10) to Specific Plan (SP). **SP 2016-286** proposes establishment of a Specific Plan on a total 78.8 acres for 304 single-family residential lots, 20.1 acres of open space and 20.3 acres of road and easements. **TR 2016-285** (TR 37131) proposes the subdivision of 78.8 gross acres into a total of 304 single family residential lots, with 20.1 acres of trails, open space and recreation and 20.3 acres of roads, easements and other

The project site is located within the City of Meniffee. The site is bounded as follows: Old Newport Road and Tierra Shores residential development to the north, Wilderness Lakes RV Resort to the south, Briggs Road, Ramona Egg Ranch and agricultural land to the east and The Lakes residential development to the west. The project site APNs are 364-190-004 and -005.

The project site was previously used for agricultural purposes. A dairy farm was established on the site around 1981 and the dairy operation included 3,000 head of cattle. Several structures left over from the former use currently occupy the site including four residences, a workshop, and a milking building. The cattle pens were removed from the site when the dairy became inactive around 2014.

Potential impacts of the project will be analyzed in compliance with the requirements of the California Environmental Quality Act (CEQA). This project is subject to the California

Environmental Quality Act (CEQA) and Section 65352.3 of the Government Code (Senate Bill 18 [2004]).

Staff contacted the Native American Heritage Commission (NAHC) which gave the City your tribe's name. The City is seeking a consultation with your tribe concerning the potential of Native American cultural resources that may be impacted by the above project. Any information you have regarding cultural places will be kept strictly confidential and will not be divulged to the public.

The City of Menifee feels that your assistance is vital to the preservation and conservation of ancestral tribal sites during the current growth that the City is experiencing. It is the desire of the City of Menifee to protect the past and our collective heritage as we proceed towards the future. Please forward any comments or requests for meetings concerning this project to my attention by **May 24, 2017**.

Sincerely,



Ryan Fowler, Senior Planner

City of Menifee
Community Development Department
29714 Haun Road
Menifee, CA 92586
Phone: (951) 672-6777
Email: rfowler@cityofmenifee.us

Attachments:

USGS Map
Aerial Photograph
Tentative Tract Map



CITY OF MENIFEE

Community Development Department

Jeff Wyman - Interim Development Director

February 23, 2017

Pauma Band of Luiseño Indians – Pauma & Yuima Reservation
Temet Aguilar, Chairperson
P.O. Box 369, Ext. 303
Pauma Valley, CA 92061

RE: Native American Consultation Request for General Plan Amendment No. 2016-287, Specific Plan No. 2016-286, Change of Zone No. 2016-288, and Tract Map No. 2016-285

Dear Native American Tribe

The City of Meniffee requests your participation in the review of General Plan Amendment No. 2016-287 (GPA 2016-287), Specific Plan No. 2016-286 (SP 2016-286), Change of Zone No. 2016-288 (CZ 2016-288), and Tract Map No. 2016-285 (TR 2016-285).

GPA 2016-287 proposes to amend the General Plan land use designation of 78.8 acres on the southwest corner of Briggs Road and Old Newport Road/Rockport Road (APNs 364-190-005 and -004) from Agriculture (AG) to Specific Plan (SP). **CZ 2016-288** proposes to change the zoning classification of 78.8 acres on the southwest corner of Briggs Road and Old Newport Road/Rockport Road (APNs 364-190-005 and -004) from Heavy Agriculture – 10 Acre Minimum (A-2-10) to Specific Plan (SP). **SP 2016-286** proposes establishment of a Specific Plan on a total 78.8 acres for 304 single-family residential lots, 20.1 acres of open space and 20.3 acres of road and easements. **TR 2016-285** (TR 37131) proposes the subdivision of 78.8 gross acres into a total of 304 single family residential lots, with 20.1 acres of trails, open space and recreation and 20.3 acres of roads, easements and other

The project site is located within the City of Meniffee. The site is bounded as follows: Old Newport Road and Tierra Shores residential development to the north, Wilderness Lakes RV Resort to the south, Briggs Road, Ramona Egg Ranch and agricultural land to the east and The Lakes residential development to the west. The project site APNs are 364-190-004 and -005.

The project site was previously used for agricultural purposes. A dairy farm was established on the site around 1981 and the dairy operation included 3,000 head of cattle. Several structures left over from the former use currently occupy the site including four residences, a workshop, and a milking building. The cattle pens were removed from the site when the dairy became inactive around 2014.

Potential impacts of the project will be analyzed in compliance with the requirements of the California Environmental Quality Act (CEQA). This project is subject to the California

Environmental Quality Act (CEQA) and Section 65352.3 of the Government Code (Senate Bill 18 [2004]).

Staff contacted the Native American Heritage Commission (NAHC) which gave the City your tribe's name. The City is seeking a consultation with your tribe concerning the potential of Native American cultural resources that may be impacted by the above project. Any information you have regarding cultural places will be kept strictly confidential and will not be divulged to the public.

The City of Menifee feels that your assistance is vital to the preservation and conservation of ancestral tribal sites during the current growth that the City is experiencing. It is the desire of the City of Menifee to protect the past and our collective heritage as we proceed towards the future. Please forward any comments or requests for meetings concerning this project to my attention by **May 24, 2017**.

Sincerely,



Ryan Fowler, Senior Planner

City of Menifee
Community Development Department
29714 Haun Road
Menifee, CA 92586
Phone: (951) 672-6777
Email: rfowler@cityofmenifee.us

Attachments:

USGS Map
Aerial Photograph
Tentative Tract Map



CITY OF MENIFEE

Community Development Department

Jeff Wyman - Interim Development Director

February 23, 2017

Pechanga Band of Mission Indians
Mark Macarro, Chairperson
P.O. Box 1477
Temecula, CA 92593

RE: Native American Consultation Request for General Plan Amendment No. 2016-287, Specific Plan No. 2016-286, Change of Zone No. 2016-288, and Tract Map No. 2016-285

Dear Native American Tribe

The City of Meniffee requests your participation in the review of General Plan Amendment No. 2016-287 (GPA 2016-287), Specific Plan No. 2016-286 (SP 2016-286), Change of Zone No. 2016-288 (CZ 2016-288), and Tract Map No. 2016-285 (TR 2016-285).

GPA 2016-287 proposes to amend the General Plan land use designation of 78.8 acres on the southwest corner of Briggs Road and Old Newport Road/Rockport Road (APNs 364-190-005 and -004) from Agriculture (AG) to Specific Plan (SP). **CZ 2016-288** proposes to change the zoning classification of 78.8 acres on the southwest corner of Briggs Road and Old Newport Road/Rockport Road (APNs 364-190-005 and -004) from Heavy Agriculture – 10 Acre Minimum (A-2-10) to Specific Plan (SP). **SP 2016-286** proposes establishment of a Specific Plan on a total 78.8 acres for 304 single-family residential lots, 20.1 acres of open space and 20.3 acres of road and easements. **TR 2016-285** (TR 37131) proposes the subdivision of 78.8 gross acres into a total of 304 single family residential lots, with 20.1 acres of trails, open space and recreation and 20.3 acres of roads, easements and other

The project site is located within the City of Meniffee. The site is bounded as follows: Old Newport Road and Tierra Shores residential development to the north, Wilderness Lakes RV Resort to the south, Briggs Road, Ramona Egg Ranch and agricultural land to the east and The Lakes residential development to the west. The project site APNs are 364-190-004 and -005.

The project site was previously used for agricultural purposes. A dairy farm was established on the site around 1981 and the dairy operation included 3,000 head of cattle. Several structures left over from the former use currently occupy the site including four residences, a workshop, and a milking building. The cattle pens were removed from the site when the dairy became inactive around 2014.

Potential impacts of the project will be analyzed in compliance with the requirements of the California Environmental Quality Act (CEQA). This project is subject to the California

Environmental Quality Act (CEQA) and Section 65352.3 of the Government Code (Senate Bill 18 [2004]).

Staff contacted the Native American Heritage Commission (NAHC) which gave the City your tribe's name. The City is seeking a consultation with your tribe concerning the potential of Native American cultural resources that may be impacted by the above project. Any information you have regarding cultural places will be kept strictly confidential and will not be divulged to the public.

The City of Menifee feels that your assistance is vital to the preservation and conservation of ancestral tribal sites during the current growth that the City is experiencing. It is the desire of the City of Menifee to protect the past and our collective heritage as we proceed towards the future. Please forward any comments or requests for meetings concerning this project to my attention by **May 24, 2017**.

Sincerely,



Ryan Fowler, Senior Planner

City of Menifee
Community Development Department
29714 Haun Road
Menifee, CA 92586
Phone: (951) 672-6777
Email: rfowler@cityofmenifee.us

Attachments:

USGS Map
Aerial Photograph
Tentative Tract Map



CITY OF MENIFEE

Community Development Department

Jeff Wyman - Interim Development Director

February 23, 2017

Ramona Band of Cahuilla Mission Indians
Joseph Hamilton, Chairperson
P.O. Box 391670
Anza, CA 92539

RE: Native American Consultation Request for General Plan Amendment No. 2016-287, Specific Plan No. 2016-286, Change of Zone No. 2016-288, and Tract Map No. 2016-285

Dear Native American Tribe

The City of Meniffee requests your participation in the review of General Plan Amendment No. 2016-287 (GPA 2016-287), Specific Plan No. 2016-286 (SP 2016-286), Change of Zone No. 2016-288 (CZ 2016-288), and Tract Map No. 2016-285 (TR 2016-285).

GPA 2016-287 proposes to amend the General Plan land use designation of 78.8 acres on the southwest corner of Briggs Road and Old Newport Road/Rockport Road (APNs 364-190-005 and -004) from Agriculture (AG) to Specific Plan (SP). **CZ 2016-288** proposes to change the zoning classification of 78.8 acres on the southwest corner of Briggs Road and Old Newport Road/Rockport Road (APNs 364-190-005 and -004) from Heavy Agriculture – 10 Acre Minimum (A-2-10) to Specific Plan (SP). **SP 2016-286** proposes establishment of a Specific Plan on a total 78.8 acres for 304 single-family residential lots, 20.1 acres of open space and 20.3 acres of road and easements. **TR 2016-285** (TR 37131) proposes the subdivision of 78.8 gross acres into a total of 304 single family residential lots, with 20.1 acres of trails, open space and recreation and 20.3 acres of roads, easements and other

The project site is located within the City of Meniffee. The site is bounded as follows: Old Newport Road and Tierra Shores residential development to the north, Wilderness Lakes RV Resort to the south, Briggs Road, Ramona Egg Ranch and agricultural land to the east and The Lakes residential development to the west. The project site APNs are 364-190-004 and -005.

The project site was previously used for agricultural purposes. A dairy farm was established on the site around 1981 and the dairy operation included 3,000 head of cattle. Several structures left over from the former use currently occupy the site including four residences, a workshop, and a milking building. The cattle pens were removed from the site when the dairy became inactive around 2014.

Potential impacts of the project will be analyzed in compliance with the requirements of the California Environmental Quality Act (CEQA). This project is subject to the California

Environmental Quality Act (CEQA) and Section 65352.3 of the Government Code (Senate Bill 18 [2004]).

Staff contacted the Native American Heritage Commission (NAHC) which gave the City your tribe's name. The City is seeking a consultation with your tribe concerning the potential of Native American cultural resources that may be impacted by the above project. Any information you have regarding cultural places will be kept strictly confidential and will not be divulged to the public.

The City of Menifee feels that your assistance is vital to the preservation and conservation of ancestral tribal sites during the current growth that the City is experiencing. It is the desire of the City of Menifee to protect the past and our collective heritage as we proceed towards the future. Please forward any comments or requests for meetings concerning this project to my attention by **May 24, 2017**.

Sincerely,



Ryan Fowler, Senior Planner

City of Menifee
Community Development Department
29714 Haun Road
Menifee, CA 92586
Phone: (951) 672-6777
Email: rfowler@cityofmenifee.us

Attachments:

USGS Map
Aerial Photograph
Tentative Tract Map



CITY OF MENIFEE

Community Development Department

Jeff Wyman - Interim Development Director

February 23, 2017

Rincon Band of Mission Indians
Bo Mazetti, Chairperson
1 West Tribal Road
Valley Center, CA 92082

RE: Native American Consultation Request for General Plan Amendment No. 2016-287, Specific Plan No. 2016-286, Change of Zone No. 2016-288, and Tract Map No. 2016-285

Dear Native American Tribe

The City of Meniffee requests your participation in the review of General Plan Amendment No. 2016-287 (GPA 2016-287), Specific Plan No. 2016-286 (SP 2016-286), Change of Zone No. 2016-288 (CZ 2016-288), and Tract Map No. 2016-285 (TR 2016-285).

GPA 2016-287 proposes to amend the General Plan land use designation of 78.8 acres on the southwest corner of Briggs Road and Old Newport Road/Rockport Road (APNs 364-190-005 and -004) from Agriculture (AG) to Specific Plan (SP). **CZ 2016-288** proposes to change the zoning classification of 78.8 acres on the southwest corner of Briggs Road and Old Newport Road/Rockport Road (APNs 364-190-005 and -004) from Heavy Agriculture – 10 Acre Minimum (A-2-10) to Specific Plan (SP). **SP 2016-286** proposes establishment of a Specific Plan on a total 78.8 acres for 304 single-family residential lots, 20.1 acres of open space and 20.3 acres of road and easements. **TR 2016-285** (TR 37131) proposes the subdivision of 78.8 gross acres into a total of 304 single family residential lots, with 20.1 acres of trails, open space and recreation and 20.3 acres of roads, easements and other

The project site is located within the City of Meniffee. The site is bounded as follows: Old Newport Road and Tierra Shores residential development to the north, Wilderness Lakes RV Resort to the south, Briggs Road, Ramona Egg Ranch and agricultural land to the east and The Lakes residential development to the west. The project site APNs are 364-190-004 and -005.

The project site was previously used for agricultural purposes. A dairy farm was established on the site around 1981 and the dairy operation included 3,000 head of cattle. Several structures left over from the former use currently occupy the site including four residences, a workshop, and a milking building. The cattle pens were removed from the site when the dairy became inactive around 2014.

Potential impacts of the project will be analyzed in compliance with the requirements of the California Environmental Quality Act (CEQA). This project is subject to the California

Environmental Quality Act (CEQA) and Section 65352.3 of the Government Code (Senate Bill 18 [2004]).

Staff contacted the Native American Heritage Commission (NAHC) which gave the City your tribe's name. The City is seeking a consultation with your tribe concerning the potential of Native American cultural resources that may be impacted by the above project. Any information you have regarding cultural places will be kept strictly confidential and will not be divulged to the public.

The City of Menifee feels that your assistance is vital to the preservation and conservation of ancestral tribal sites during the current growth that the City is experiencing. It is the desire of the City of Menifee to protect the past and our collective heritage as we proceed towards the future. Please forward any comments or requests for meetings concerning this project to my attention by **May 24, 2017**.

Sincerely,



Ryan Fowler, Senior Planner

City of Menifee
Community Development Department
29714 Haun Road
Menifee, CA 92586
Phone: (951) 672-6777
Email: rfowler@cityofmenifee.us

Attachments:

USGS Map
Aerial Photograph
Tentative Tract Map



CITY OF MENIFEE

Community Development Department

Jeff Wyman - Interim Development Director

February 23, 2017

San Luis Rey Band of Mission Indians
San Luis Rey, Tribal Council
1889 Sunset Drive
Vista, CA 92081

RE: Native American Consultation Request for General Plan Amendment No. 2016-287, Specific Plan No. 2016-286, Change of Zone No. 2016-288, and Tract Map No. 2016-285

Dear Native American Tribe

The City of Meniffee requests your participation in the review of General Plan Amendment No. 2016-287 (GPA 2016-287), Specific Plan No. 2016-286 (SP 2016-286), Change of Zone No. 2016-288 (CZ 2016-288), and Tract Map No. 2016-285 (TR 2016-285).

GPA 2016-287 proposes to amend the General Plan land use designation of 78.8 acres on the southwest corner of Briggs Road and Old Newport Road/Rockport Road (APNs 364-190-005 and -004) from Agriculture (AG) to Specific Plan (SP). **CZ 2016-288** proposes to change the zoning classification of 78.8 acres on the southwest corner of Briggs Road and Old Newport Road/Rockport Road (APNs 364-190-005 and -004) from Heavy Agriculture – 10 Acre Minimum (A-2-10) to Specific Plan (SP). **SP 2016-286** proposes establishment of a Specific Plan on a total 78.8 acres for 304 single-family residential lots, 20.1 acres of open space and 20.3 acres of road and easements. **TR 2016-285** (TR 37131) proposes the subdivision of 78.8 gross acres into a total of 304 single family residential lots, with 20.1 acres of trails, open space and recreation and 20.3 acres of roads, easements and other

The project site is located within the City of Meniffee. The site is bounded as follows: Old Newport Road and Tierra Shores residential development to the north, Wilderness Lakes RV Resort to the south, Briggs Road, Ramona Egg Ranch and agricultural land to the east and The Lakes residential development to the west. The project site APNs are 364-190-004 and -005.

The project site was previously used for agricultural purposes. A dairy farm was established on the site around 1981 and the dairy operation included 3,000 head of cattle. Several structures left over from the former use currently occupy the site including four residences, a workshop, and a milking building. The cattle pens were removed from the site when the dairy became inactive around 2014.

Potential impacts of the project will be analyzed in compliance with the requirements of the California Environmental Quality Act (CEQA). This project is subject to the California

Environmental Quality Act (CEQA) and Section 65352.3 of the Government Code (Senate Bill 18 [2004]).

Staff contacted the Native American Heritage Commission (NAHC) which gave the City your tribe's name. The City is seeking a consultation with your tribe concerning the potential of Native American cultural resources that may be impacted by the above project. Any information you have regarding cultural places will be kept strictly confidential and will not be divulged to the public.

The City of Menifee feels that your assistance is vital to the preservation and conservation of ancestral tribal sites during the current growth that the City is experiencing. It is the desire of the City of Menifee to protect the past and our collective heritage as we proceed towards the future. Please forward any comments or requests for meetings concerning this project to my attention by **May 24, 2017**.

Sincerely,

A handwritten signature in blue ink, reading "Ryan Fowler", is positioned above a horizontal line.

Ryan Fowler, Senior Planner

City of Menifee
Community Development Department
29714 Haun Road
Menifee, CA 92586
Phone: (951) 672-6777
Email: rfowler@cityofmenifee.us

Attachments:

USGS Map
Aerial Photograph
Tentative Tract Map



CITY OF MENIFEE

Community Development Department

Jeff Wyman - Interim Development Director

February 23, 2017

Santa Rosa Band of Mission Indians
Steven Estrada, Chairperson
P.O. Box 391820
Anza, CA 92539

RE: Native American Consultation Request for General Plan Amendment No. 2016-287, Specific Plan No. 2016-286, Change of Zone No. 2016-288, and Tract Map No. 2016-285

Dear Native American Tribe

The City of Meniffee requests your participation in the review of General Plan Amendment No. 2016-287 (GPA 2016-287), Specific Plan No. 2016-286 (SP 2016-286), Change of Zone No. 2016-288 (CZ 2016-288), and Tract Map No. 2016-285 (TR 2016-285).

GPA 2016-287 proposes to amend the General Plan land use designation of 78.8 acres on the southwest corner of Briggs Road and Old Newport Road/Rockport Road (APNs 364-190-005 and -004) from Agriculture (AG) to Specific Plan (SP). **CZ 2016-288** proposes to change the zoning classification of 78.8 acres on the southwest corner of Briggs Road and Old Newport Road/Rockport Road (APNs 364-190-005 and -004) from Heavy Agriculture – 10 Acre Minimum (A-2-10) to Specific Plan (SP). **SP 2016-286** proposes establishment of a Specific Plan on a total 78.8 acres for 304 single-family residential lots, 20.1 acres of open space and 20.3 acres of road and easements. **TR 2016-285** (TR 37131) proposes the subdivision of 78.8 gross acres into a total of 304 single family residential lots, with 20.1 acres of trails, open space and recreation and 20.3 acres of roads, easements and other

The project site is located within the City of Meniffee. The site is bounded as follows: Old Newport Road and Tierra Shores residential development to the north, Wilderness Lakes RV Resort to the south, Briggs Road, Ramona Egg Ranch and agricultural land to the east and The Lakes residential development to the west. The project site APNs are 364-190-004 and -005.

The project site was previously used for agricultural purposes. A dairy farm was established on the site around 1981 and the dairy operation included 3,000 head of cattle. Several structures left over from the former use currently occupy the site including four residences, a workshop, and a milking building. The cattle pens were removed from the site when the dairy became inactive around 2014.

Potential impacts of the project will be analyzed in compliance with the requirements of the California Environmental Quality Act (CEQA). This project is subject to the California Environmental Quality Act (CEQA) and Section 65352.3 of the Government Code (Senate Bill 18 [2004]).

Staff contacted the Native American Heritage Commission (NAHC) which gave the City your tribe's name. The City is seeking a consultation with your tribe concerning the potential of Native American cultural resources that may be impacted by the above project. Any information you have regarding cultural places will be kept strictly confidential and will not be divulged to the public.

The City of Menifee feels that your assistance is vital to the preservation and conservation of ancestral tribal sites during the current growth that the City is experiencing. It is the desire of the City of Menifee to protect the past and our collective heritage as we proceed towards the future. Please forward any comments or requests for meetings concerning this project to my attention by **May 24, 2017**.

Sincerely,



Ryan Fowler, Senior Planner

City of Menifee
Community Development Department
29714 Haun Road
Menifee, CA 92586
Phone: (951) 672-6777
Email: rfowler@cityofmenifee.us

Attachments:

USGS Map
Aerial Photograph
Tentative Tract Map



CITY OF MENIFEE

Community Development Department

Jeff Wyman - Interim Development Director

February 23, 2017

Soboba Band of Luiseño Indians
Rosemary Morillo, Chairperson
P.O. Box 487
San Jacinto, CA 92583

RE: Native American Consultation Request for General Plan Amendment No. 2016-287, Specific Plan No. 2016-286, Change of Zone No. 2016-288, and Tract Map No. 2016-285

Dear Native American Tribe

The City of Meniffee requests your participation in the review of General Plan Amendment No. 2016-287 (GPA 2016-287), Specific Plan No. 2016-286 (SP 2016-286), Change of Zone No. 2016-288 (CZ 2016-288), and Tract Map No. 2016-285 (TR 2016-285).

GPA 2016-287 proposes to amend the General Plan land use designation of 78.8 acres on the southwest corner of Briggs Road and Old Newport Road/Rockport Road (APNs 364-190-005 and -004) from Agriculture (AG) to Specific Plan (SP). **CZ 2016-288** proposes to change the zoning classification of 78.8 acres on the southwest corner of Briggs Road and Old Newport Road/Rockport Road (APNs 364-190-005 and -004) from Heavy Agriculture – 10 Acre Minimum (A-2-10) to Specific Plan (SP). **SP 2016-286** proposes establishment of a Specific Plan on a total 78.8 acres for 304 single-family residential lots, 20.1 acres of open space and 20.3 acres of road and easements. **TR 2016-285** (TR 37131) proposes the subdivision of 78.8 gross acres into a total of 304 single family residential lots, with 20.1 acres of trails, open space and recreation and 20.3 acres of roads, easements and other

The project site is located within the City of Meniffee. The site is bounded as follows: Old Newport Road and Tierra Shores residential development to the north, Wilderness Lakes RV Resort to the south, Briggs Road, Ramona Egg Ranch and agricultural land to the east and The Lakes residential development to the west. The project site APNs are 364-190-004 and -005.

The project site was previously used for agricultural purposes. A dairy farm was established on the site around 1981 and the dairy operation included 3,000 head of cattle. Several structures left over from the former use currently occupy the site including four residences, a workshop, and a milking building. The cattle pens were removed from the site when the dairy became inactive around 2014.

Potential impacts of the project will be analyzed in compliance with the requirements of the California Environmental Quality Act (CEQA). This project is subject to the California Environmental Quality Act (CEQA) and Section 65352.3 of the Government Code (Senate Bill 18 [2004]).

Staff contacted the Native American Heritage Commission (NAHC) which gave the City your tribe's name. The City is seeking a consultation with your tribe concerning the potential of Native American cultural resources that may be impacted by the above project. Any information you have regarding cultural places will be kept strictly confidential and will not be divulged to the public.

The City of Menifee feels that your assistance is vital to the preservation and conservation of ancestral tribal sites during the current growth that the City is experiencing. It is the desire of the City of Menifee to protect the past and our collective heritage as we proceed towards the future. Please forward any comments or requests for meetings concerning this project to my attention by **May 24, 2017**.

Sincerely,



Ryan Fowler, Senior Planner

City of Menifee
Community Development Department
29714 Haun Road
Menifee, CA 92586
Phone: (951) 672-6777
Email: rfowler@cityofmenifee.us

Attachments:

USGS Map
Aerial Photograph
Tentative Tract Map



CITY OF MENIFEE

Community Development Department

Jeff Wyman - Interim Development Director

February 15, 2017

Agua Caliente Band of Cahuilla Indians

Jeff Grubbe, Chairperson

5401 Dinah Shore Drive

Palm Springs, CA 92264

RE: Native American Consultation Request for General Plan Amendment No. 2016-287, Specific Plan No. 2016-286, Change of Zone No. 2016-288, and Tract Map No. 2016-285

Dear Native American Tribe

The City of Meniffee requests your participation in the review of General Plan Amendment No. 2016-287 (GPA 2016-287), Specific Plan No. 2016-286 (SP 2016-286), Change of Zone No. 2016-288 (CZ 2016-288), and Tract Map No. 2016-285 (TR 2016-285).

GPA 2016-287 proposes to amend the General Plan land use designation of 78.8 acres on the southwest corner of Briggs Road and Old Newport Road/Rockport Road (APNs 364-190-005 and -004) from Agriculture (AG) to Specific Plan (SP). **CZ 2016-288** proposes to change the zoning classification of 78.8 acres on the southwest corner of Briggs Road and Old Newport Road/Rockport Road (APNs 364-190-005 and -004) from Heavy Agriculture – 10 Acre Minimum (A-2-10) to Specific Plan (SP). **SP 2016-286** proposes establishment of a Specific Plan on a total 78.8 acres for 304 single-family residential lots, 20.1 acres of open space and 20.3 acres of road and easements. **TR 2016-285** (TR 37131) proposes the subdivision of 78.8 gross acres into a total of 304 single family residential lots, with 20.1 acres of trails, open space and recreation and 20.3 acres of roads, easements and other

The project site is located within the City of Meniffee. The site is bounded as follows: Old Newport Road and Tierra Shores residential development to the north, Wilderness Lakes RV Resort to the south, Briggs Road, Ramona Egg Ranch and agricultural land to the east and The Lakes residential development to the west. The project site APNs are 364-190-004 and -005.

The project site was previously used for agricultural purposes. A dairy farm was established on the site around 1981 and the dairy operation included 3,000 head of cattle. Several structures left over from the former use currently occupy the site including four residences, a workshop, and a milking building. The cattle pens were removed from the site when the dairy became inactive around 2014.

Potential impacts of the project will be analyzed in compliance with the requirements of the California Environmental Quality Act (CEQA). This project is subject to the California

Environmental Quality Act (CEQA) and Section 65352.3 of the Government Code (Senate Bill 18 [2004])).

Staff contacted the Native American Heritage Commission (NAHC) which gave the City your tribe's name. The City is seeking a consultation with your tribe concerning the potential of Native American cultural resources that may be impacted by the above project. Any information you have regarding cultural places will be kept strictly confidential and will not be divulged to the public.

The City of Menifee feels that your assistance is vital to the preservation and conservation of ancestral tribal sites during the current growth that the City is experiencing. It is the desire of the City of Menifee to protect the past and our collective heritage as we proceed towards the future. Please forward any comments or requests for meetings concerning this project to my attention by May 15, 2017.

Sincerely,



Ryan Fowler, Senior Planner

City of Menifee
Community Development Department
29714 Haun Road
Menifee, CA 92586
Phone: (951) 672-6777
Email: rfowler@cityofmenifee.us

Attachments:

USGS Map
Aerial Photograph
Tentative Tract Map



CITY OF MENIFEE

Community Development Department

Jeff Wyman - Interim Development Director

February 23, 2017

Torres-Martinez Desert Cahuilla Indians
Mary Resvaloso, Chairperson
P.O. Box 1160
Thermal, CA 92274

RE: Native American Consultation Request for General Plan Amendment No. 2016-287, Specific Plan No. 2016-286, Change of Zone No. 2016-288, and Tract Map No. 2016-285

Dear Native American Tribe

The City of Meniffee requests your participation in the review of General Plan Amendment No. 2016-287 (GPA 2016-287), Specific Plan No. 2016-286 (SP 2016-286), Change of Zone No. 2016-288 (CZ 2016-288), and Tract Map No. 2016-285 (TR 2016-285).

GPA 2016-287 proposes to amend the General Plan land use designation of 78.8 acres on the southwest corner of Briggs Road and Old Newport Road/Rockport Road (APNs 364-190-005 and -004) from Agriculture (AG) to Specific Plan (SP). **CZ 2016-288** proposes to change the zoning classification of 78.8 acres on the southwest corner of Briggs Road and Old Newport Road/Rockport Road (APNs 364-190-005 and -004) from Heavy Agriculture – 10 Acre Minimum (A-2-10) to Specific Plan (SP). **SP 2016-286** proposes establishment of a Specific Plan on a total 78.8 acres for 304 single-family residential lots, 20.1 acres of open space and 20.3 acres of road and easements. **TR 2016-285** (TR 37131) proposes the subdivision of 78.8 gross acres into a total of 304 single family residential lots, with 20.1 acres of trails, open space and recreation and 20.3 acres of roads, easements and other

The project site is located within the City of Meniffee. The site is bounded as follows: Old Newport Road and Tierra Shores residential development to the north, Wilderness Lakes RV Resort to the south, Briggs Road, Ramona Egg Ranch and agricultural land to the east and The Lakes residential development to the west. The project site APNs are 364-190-004 and -005.

The project site was previously used for agricultural purposes. A dairy farm was established on the site around 1981 and the dairy operation included 3,000 head of cattle. Several structures left over from the former use currently occupy the site including four residences, a workshop, and a milking building. The cattle pens were removed from the site when the dairy became inactive around 2014.

Potential impacts of the project will be analyzed in compliance with the requirements of the California Environmental Quality Act (CEQA). This project is subject to the California

Environmental Quality Act (CEQA) and Section 65352.3 of the Government Code (Senate Bill 18 [2004]).

Staff contacted the Native American Heritage Commission (NAHC) which gave the City your tribe's name. The City is seeking a consultation with your tribe concerning the potential of Native American cultural resources that may be impacted by the above project. Any information you have regarding cultural places will be kept strictly confidential and will not be divulged to the public.

The City of Menifee feels that your assistance is vital to the preservation and conservation of ancestral tribal sites during the current growth that the City is experiencing. It is the desire of the City of Menifee to protect the past and our collective heritage as we proceed towards the future. Please forward any comments or requests for meetings concerning this project to my attention by **May 24, 2017**.

Sincerely,



Ryan Fowler, Senior Planner

City of Menifee
Community Development Department
29714 Haun Road
Menifee, CA 92586
Phone: (951) 672-6777
Email: rfowler@cityofmenifee.us

Attachments:

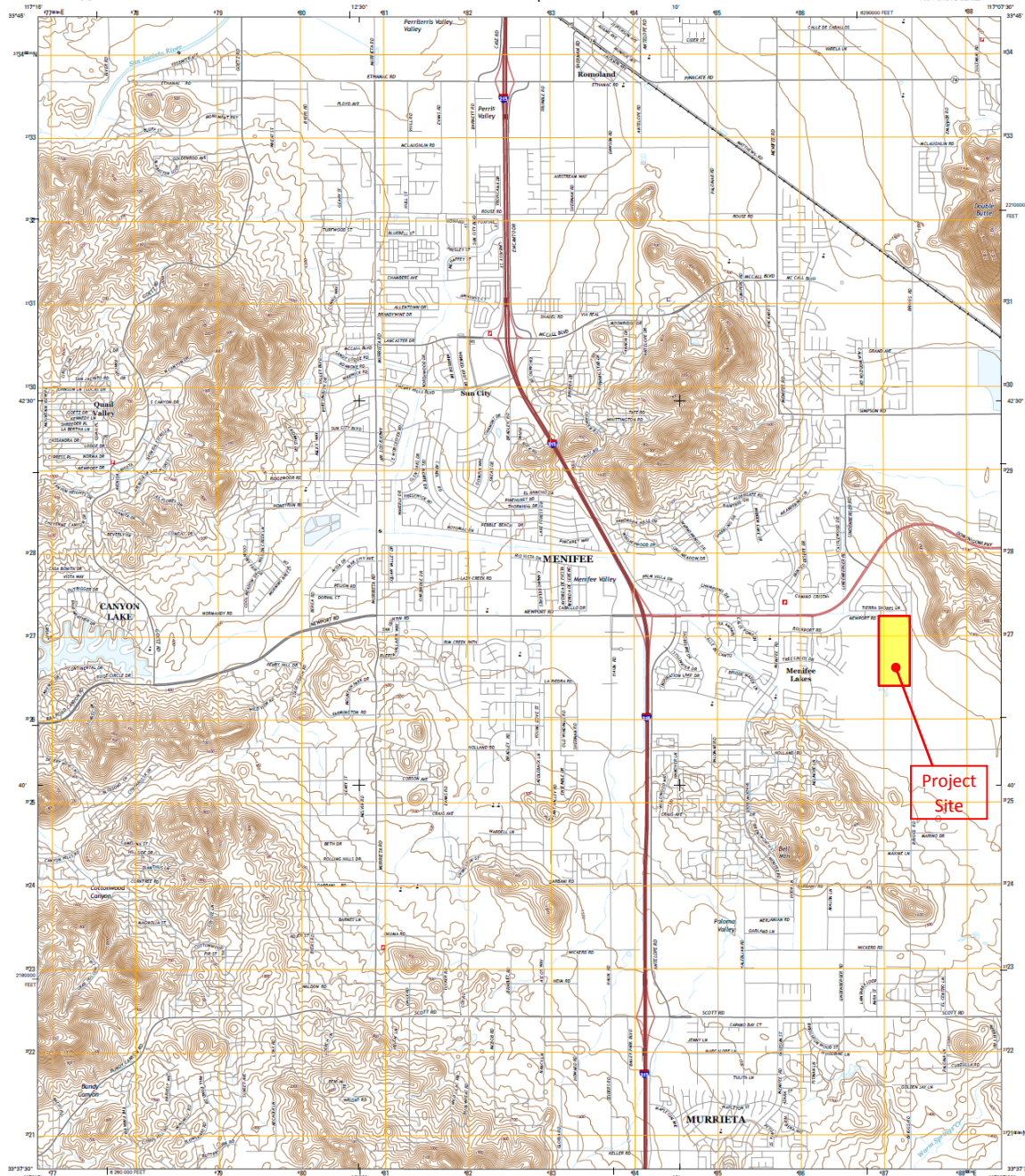
USGS Map
Aerial Photograph
Tentative Tract Map



U.S. DEPARTMENT OF THE INTERIOR
U.S. GEOLOGICAL SURVEY



ROMOLAND QUADRANGLE
CALIFORNIA-RIVERSIDE CO.
7.5-MINUTE SERIES

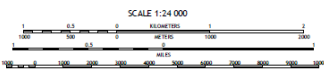
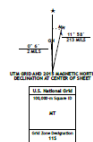


Produced by the United States Geological Survey

World Geodetic System of 1984 (WGS84) Projection and
1:250,000 scale (National Traction Series, Zone 11S)
10 000 Feet Grid (California Coordinate System of 1983 (Zone 11S))

This map is not a legal document. Romoland and its
geography for this map are for informational purposes only.
Romoland and its geography are not to be shown. Please consult before
entering private lands.

Source: 1:250,000 scale, Nov 2010
Data: 1:250,000 scale, Nov 2010
Map: 1:250,000 scale, Nov 2010
Projection: National Geographic, Nov 2010
Datum: North American, Nov 2010
Scale: 1:250,000 scale, Nov 2010
Public Land Survey System: 1:250,000 scale, Nov 2010



CONTOUR INTERVAL 10 FEET
NORTH AMERICAN DATUM OF 1983
This map was produced to conform with the
National Geodetic Survey US Topographic Standard, 2011.
A metadata file associated with this product is available at: www.usgs.gov

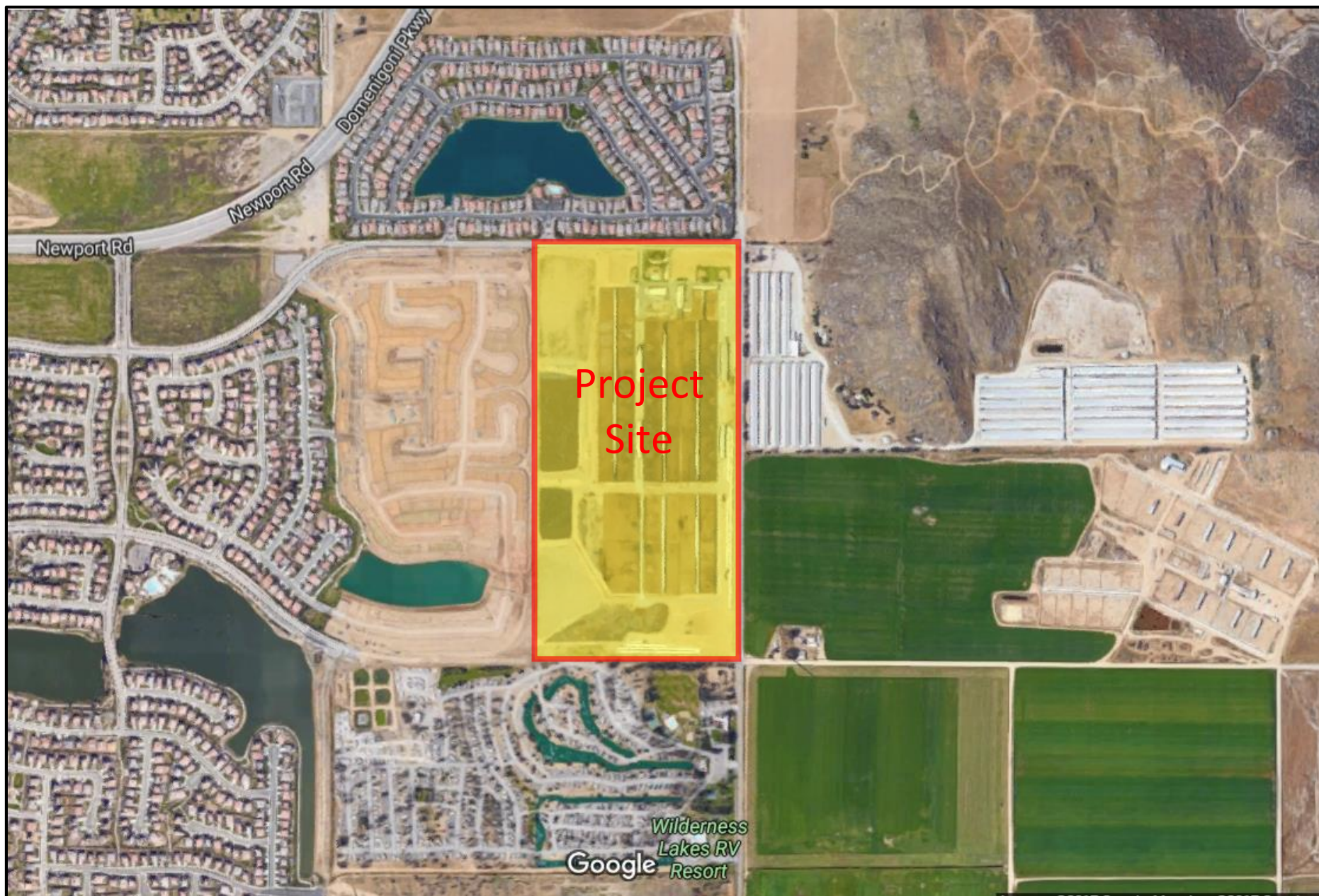


1	2	3	4	5	6	7	8	9	10
1	2	3	4	5	6	7	8	9	10
1	2	3	4	5	6	7	8	9	10
1	2	3	4	5	6	7	8	9	10

ROAD CLASSIFICATION
Expressway
Secondary Hwy
Ramp
Local Connector
Local Road
4000
US Route
State Road

ROMOLAND, CA
2015





APPLICANT

name
address
address
(308) xxx-xxxx

LANDOWNER

THE ABACHERLI FAMILY TRUST
29875 NEWPORT ROAD
MENIFEE, CA 92584

PREPARER

EXCEL ENGINEERING
440 STATE PLACE
ESCONDIDO, CA 92029
PHONE (760) 745-8118
FAX (760) 745-1890

ACREAGE

NET AREA
79.681 GROSS AREA

FLOOD ZONE DESIGNATION

THIS SITE IS LOCATED IN ZONE A (NO BASE FLOOD ELEVATIONS DETERMINED) AS SHOWN ON THE FLOOD INSURANCE RATE MAP, COMMUNITY-PANEL NO. 060245 2070 H MAP REVISED AUGUST 18, 2014

ZONING

ZONING FOR THIS SITE IS IN THE SCENIC HIGHWAY COMMERCIAL ZONE (C-P-S).

LEGAL DESCRIPTION

A PORTION OF THE EAST HALF OF THE NORTHEAST QUARTER OF SECTION 1, TOWNSHIP 6 SOUTH, RANGE 3 WEST, IN THE CITY OF MENIFEE, COUNTY OF RIVERSIDE, STATE OF CALIFORNIA, SAN BERNARDINO BASE AND MERIDIAN

ASSESSOR'S PARCEL NUMBER

364-190-004, 005

NOTES

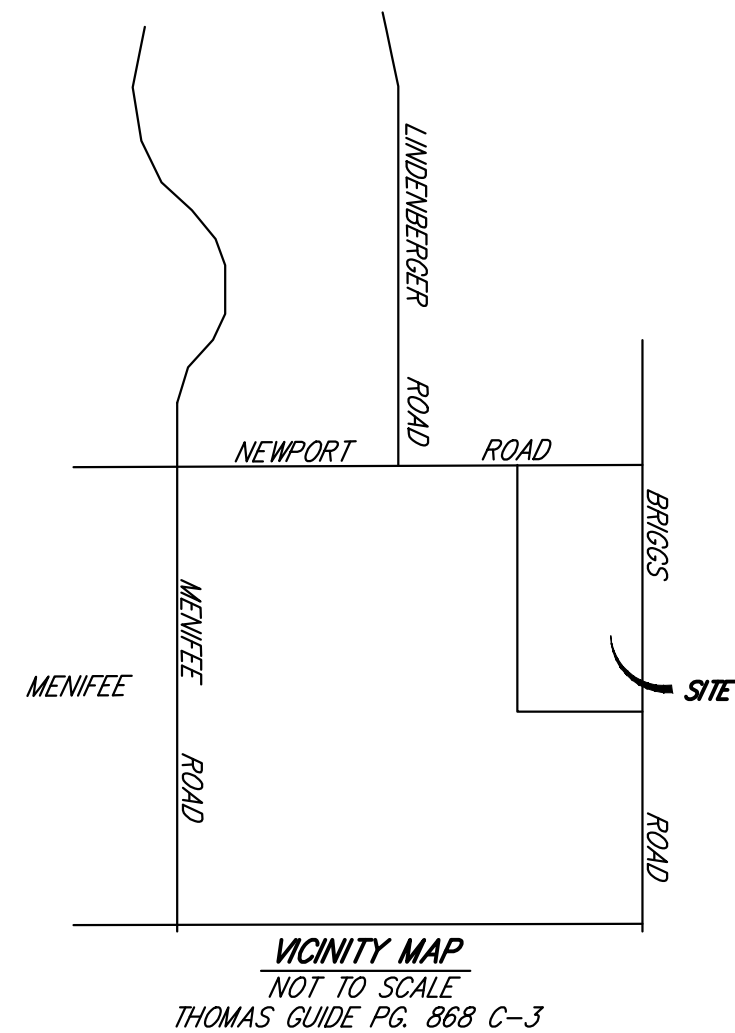
- THIS SITE IS NOT A LIQUEFACTION ZONE
- THIS SITE IS NOT IN A SEISMIC SPECIAL STUDY ZONE
- GEOLOGIC HAZARDS WERE NOT ENCOUNTERED ON THIS SITE
- NO KNOWN EXISTING WELLS WITHIN 200 FEET OF PROPERTY BOUNDARY
- NO SUBSURFACE SEPTIC DISPOSAL PROPOSED

REFERENCE INFORMATION:

- THIS TENTATIVE MAP INCLUDES ALL OF THE CONTINUOUS OWNERSHIP OF THE LANDOWNER.
- PRELIMINARY EARTHWORK CALCULATIONS INDICATE TRACT _____ WILL BALANCE ON SITE. TRACT _____ WILL GENERATE APPROXIMATELY _____ C.Y. RAW CUT AND _____ C.Y. RAW FILL.
- NO KNOWN EXISTING WELLS WITHIN 200 FEET OF PROPERTY BOUNDARY
- NO SUBSURFACE SEPTIC DISPOSAL PROPOSED

LEGEND

	EXISTING	PROPOSED
R.O.W.	---	---
EASEMENT LINE	---	---
LOT LINE	---	---
CURB & GUTTER	---	---
CURB	---	---
SIDEWALK	---	---
HANDICAP ACCESS PATH	---	---
P.C.C. SWALE	---	---
A.C. PAVEMENT	---	---



TENTATIVE TRACT
FOR
ROCKPORT RANCH
MENIFEE, CA

