



## **Photo Location #6**



**VIEW 6**  
**ALPINE MEADOWS**  
**BASE TERMINAL**  
**EXISTING CONDITIONS**

B2B GONDOLA EIS

FIGURE D-6a



**Existing Conditions**

Viewpoint Details

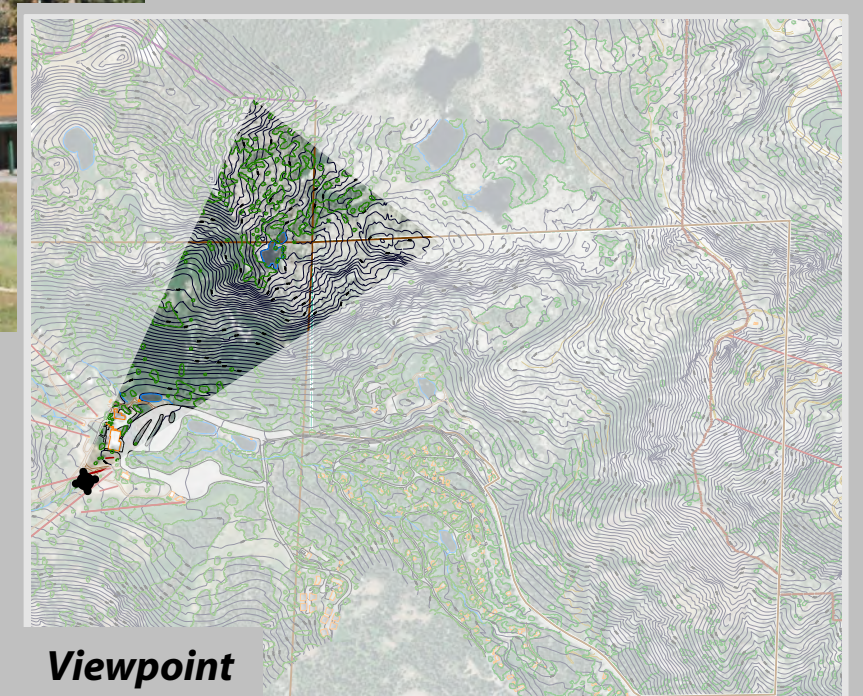
Viewpoint elevation = 6,970'

Photograph taken by Grant Kaye using a Canon EOS 5D Mark III camera on 03/30/2016 at 1:21 pm, with a 42mm focal length to emulate the human eye.

Prepared By:

 **SE GROUP**

September 2018



**Viewpoint**





Alternative 2

*Viewpoint Details*

*Viewpoint elevation = 6,970'*

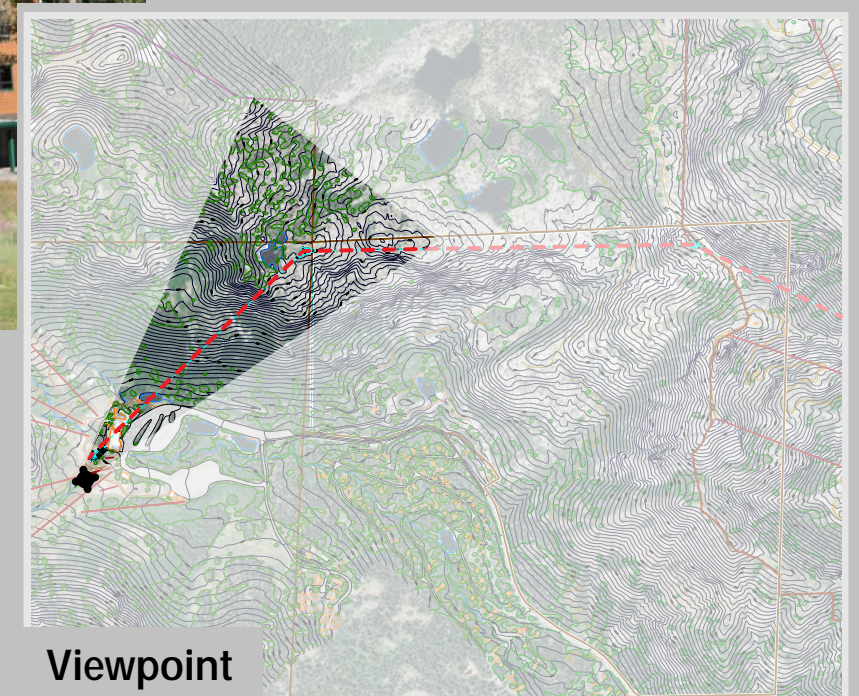
*Photograph taken by Grant Kaye using a Canon EOS 5D Mark III camera on 03/30/2016 at 1:21 pm, with a 42mm focal length to emulate the human eye.*

Prepared By:



September 2018

**VIEW 6**  
**ALPINE MEADOWS**  
**BASE TERMINAL**  
**ALTERNATIVE 2**  
**SIMULATED CONDITIONS**  
B2B GONDOLA EIS      FIGURE D-6b



Viewpoint





Alternative 3

*Viewpoint Details*

*Viewpoint elevation = 6,970'*

*Photograph taken by Grant Kaye using a Canon EOS 5D Mark III camera on 03/30/2016 at 1:21 pm, with a 42mm focal length to emulate the human eye.*

Prepared By:



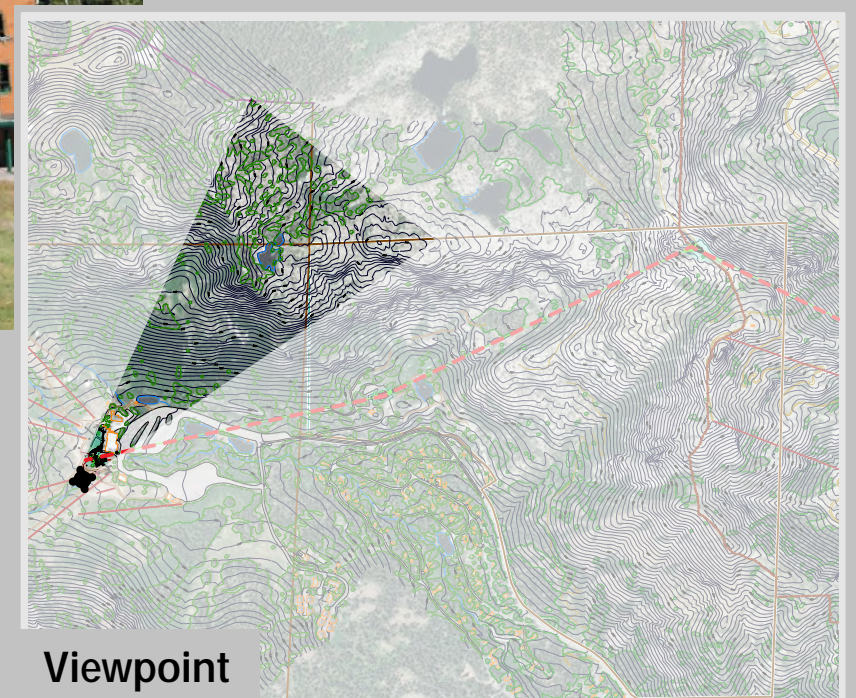
September 2018

**VIEW 6**  
**ALPINE MEADOWS**  
**BASE TERMINAL**  
**ALTERNATIVE 3**

**SIMULATED CONDITIONS**

B2B GONDOLA EIS

FIGURE D-6c



Viewpoint





Alternative 4

#### *Viewpoint Details*

*Viewpoint elevation = 6,970'*

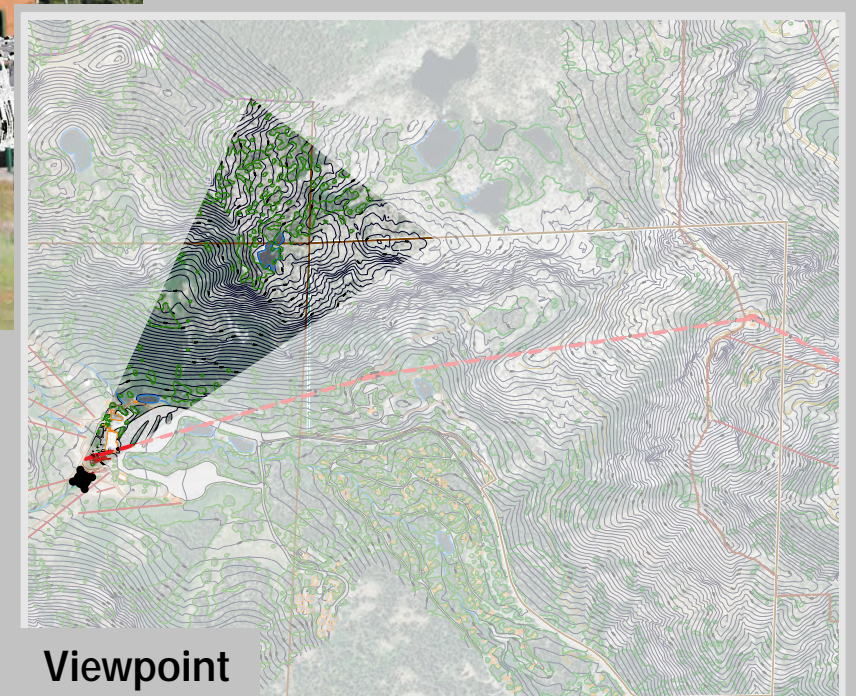
*Photograph taken by Grant Kaye using a Canon EOS 5D Mark III camera on 03/30/2016 at 1:21 pm, with a 42mm focal length to emulate the human eye.*

Prepared By:



September 2018

**VIEW 6**  
**ALPINE MEADOWS**  
**BASE TERMINAL**  
**ALTERNATIVE 4**  
**SIMULATED CONDITIONS**  
B2B GONDOLA EIS      FIGURE D-6d



Viewpoint



## **Photo Location #7**





**VIEW 7**  
**ALPINE MEADOWS**  
**BASE TERMINAL**  
**EXISTING CONDITIONS**

B2B GONDOLA EIS

FIGURE D-7a

**Existing Conditions**

*Viewpoint Details*

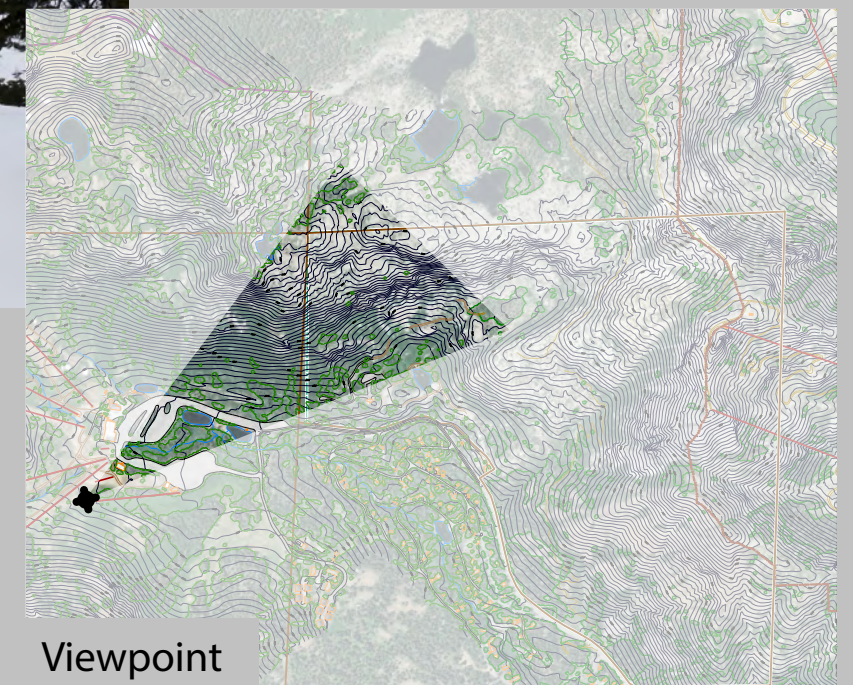
*Viewpoint elevation = 6,970'*

*Photograph taken by Grant Kaye using a Canon EOS 5D Mark III camera on  
08/17/2017 at 11:45 am, with a 42mm focal length to emulate the human eye.*

Prepared By:



September 2018



Viewpoint





**VIEW 7**  
**ALPINE MEADOWS**  
**BASE TERMINAL**  
**ALTERNATIVE 2**  
**SIMULATED CONDITIONS**  
B2B GONDOLA EIS      FIGURE D-7b

**Alternative 2**

*Viewpoint Details*

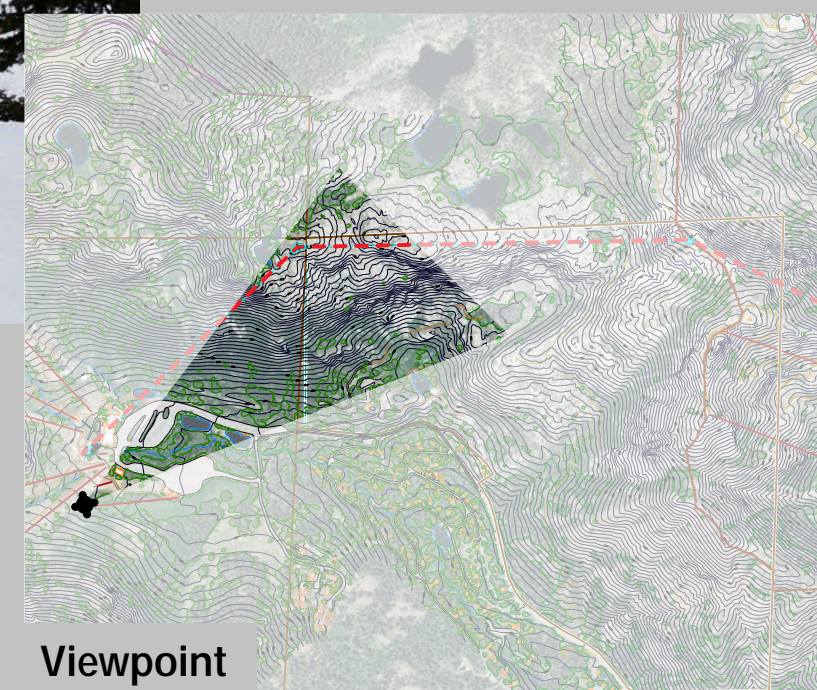
*Viewpoint elevation = 6,970'*

*Photograph taken by Grant Kaye using a Canon EOS 5D Mark III camera on 08/17/2017 at 11:45 am, with a 42mm focal length to emulate the human eye.*

Prepared By:



September 2018



**Viewpoint**





**VIEW 7**  
**ALPINE MEADOWS**  
**BASE TERMINAL**  
**ALTERNATIVE 3**  
**SIMULATED CONDITIONS**  
B2B GONDOLA EIS      FIGURE D-7c

**Alternative 3**

*Viewpoint Details*

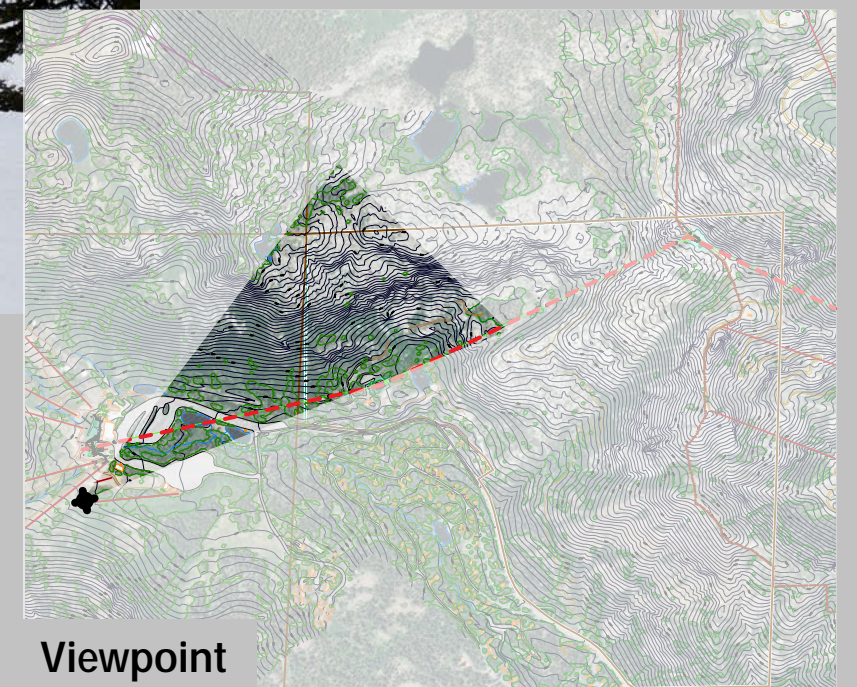
*Viewpoint elevation = 6,970'*

*Photograph taken by Grant Kaye using a Canon EOS 5D Mark III camera on 08/17/2017 at 11:45 am, with a 42mm focal length to emulate the human eye.*

Prepared By:



September 2018



**Viewpoint**





**VIEW 7**  
**ALPINE MEADOWS**  
**BASE TERMINAL**  
**ALTERNATIVE 4**  
**SIMULATED CONDITIONS**  
B2B GONDOLA EIS      FIGURE D-7d

**Alternative 4**

*Viewpoint Details*

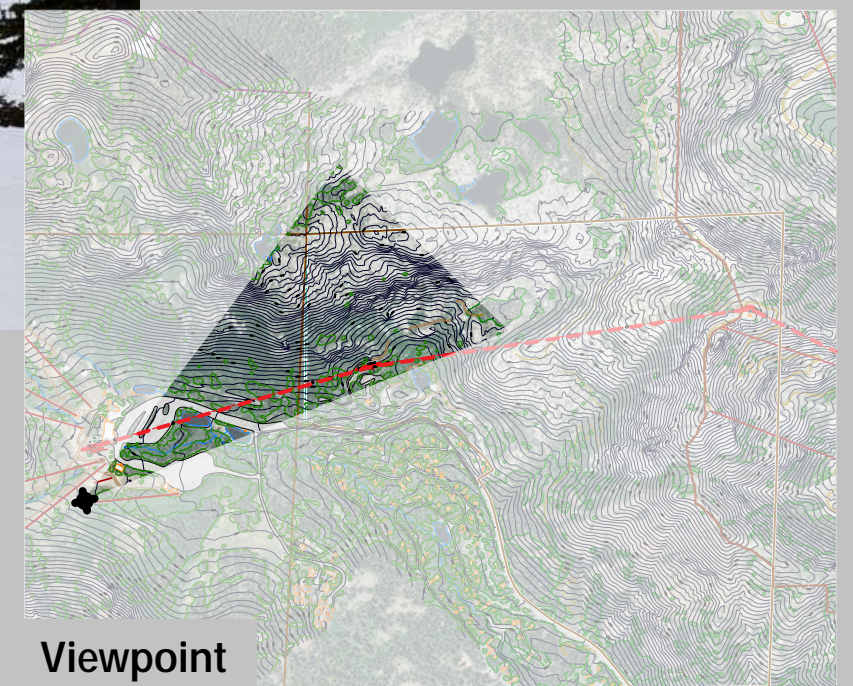
*Viewpoint elevation = 6,970'*

*Photograph taken by Grant Kaye using a Canon EOS 5D Mark III camera on 08/17/2017 at 11:45 am, with a 42mm focal length to emulate the human eye.*

Prepared By:



September 2018



**Viewpoint**



## **Photo Location #8**





Existing Conditions

#### Viewpoint Details

Viewpoint elevation = 6,970'

Photograph taken by Grant Kaye using a Canon EOS 5D Mark III camera on 08/17/2017 at 11:45 am, with a 42mm focal length to emulate the human eye.

Prepared By:

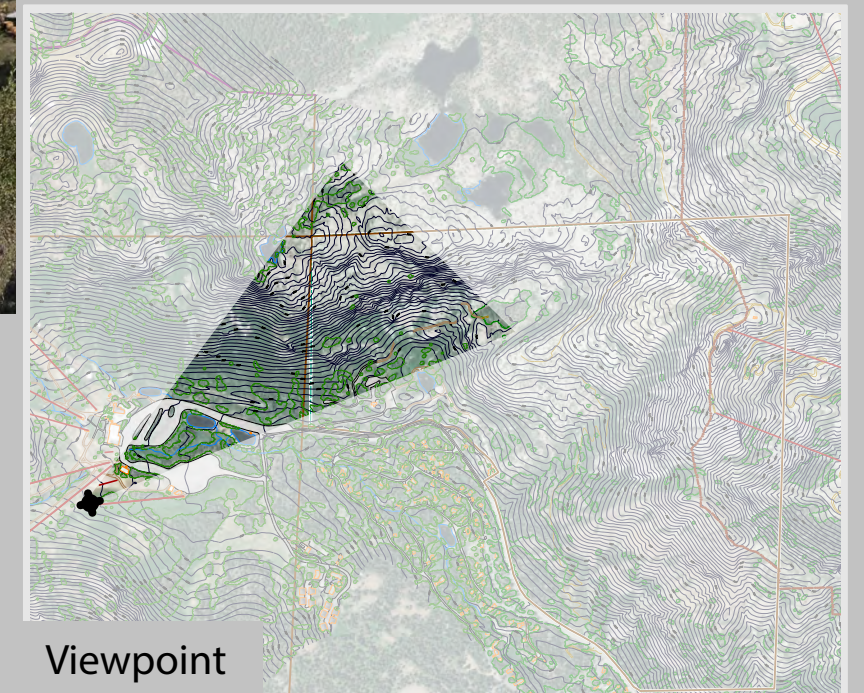


September 2018

## VIEW 8 ALPINE MEADOWS BASE TERMINAL EXISTING CONDITIONS

B2B GONDOLA EIS

FIGURE D-8a



Viewpoint





Alternative 2

Viewpoint Details

Viewpoint elevation = 6,970'

Photograph taken by Grant Kaye using a Canon EOS 5D Mark III camera on 08/17/2017 at 11:45 am, with a 42mm focal length to emulate the human eye.

Prepared By:



September 2018

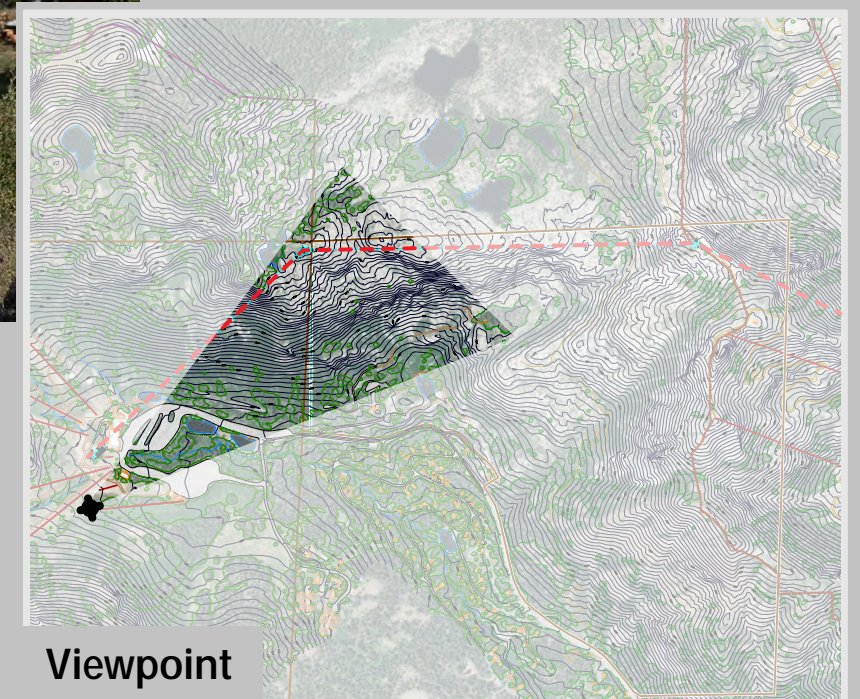


**VIEW 8  
ALPINE MEADOWS  
BASE TERMINAL  
ALTERNATIVE 2**

**SIMULATED CONDITIONS**

B2B GONDOLA EIS

FIGURE D-8b



Viewpoint





Alternative 3

#### Viewpoint Details

Viewpoint elevation = 6,970'

Photograph taken by Grant Kaye using a Canon EOS 5D Mark III camera on 08/17/2017 at 11:45 am, with a 42mm focal length to emulate the human eye.

Prepared By:



September 2018

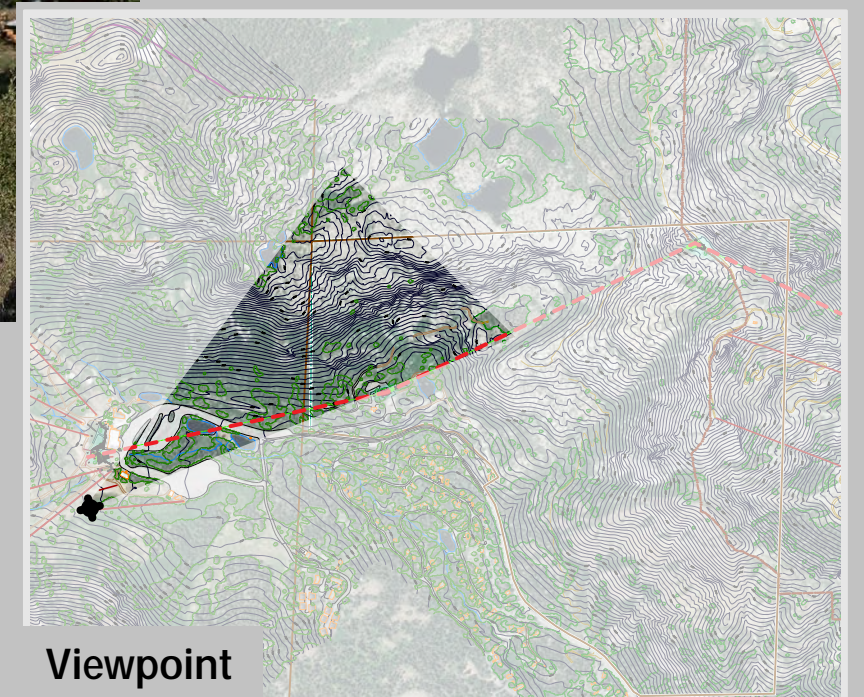


## VIEW 8 ALPINE MEADOWS BASE TERMINAL ALTERNATIVE 3

SIMULATED CONDITIONS

B2B GONDOLA EIS

FIGURE D-8c



Viewpoint





Alternative 4

#### Viewpoint Details

Viewpoint elevation = 6,970'

Photograph taken by Grant Kaye using a Canon EOS 5D Mark III camera on 08/17/2017 at 11:45 am, with a 42mm focal length to emulate the human eye.

Prepared By:



September 2018

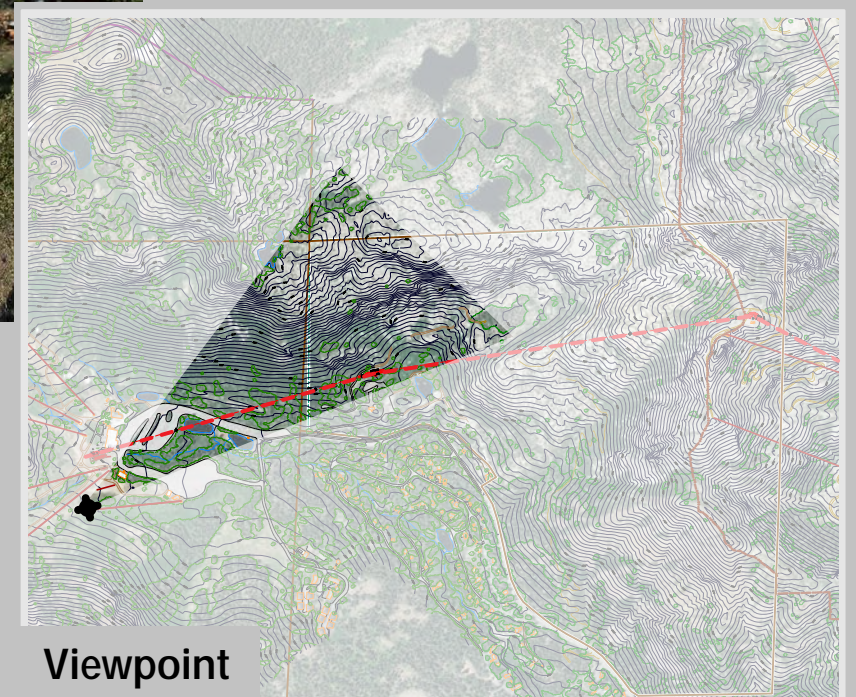


## VIEW 8 ALPINE MEADOWS BASE TERMINAL ALTERNATIVE 4

SIMULATED CONDITIONS

B2B GONDOLA EIS

FIGURE D-8d



Viewpoint



## **Photo Location #9**





**VIEW 9**  
**FIVE LAKES TRAIL**  
**SWITCHBACK 1**  
**EXISTING CONDITIONS**

B2B GONDOLA EIS

FIGURE D-9a

Existing Conditions

*Viewpoint Details*

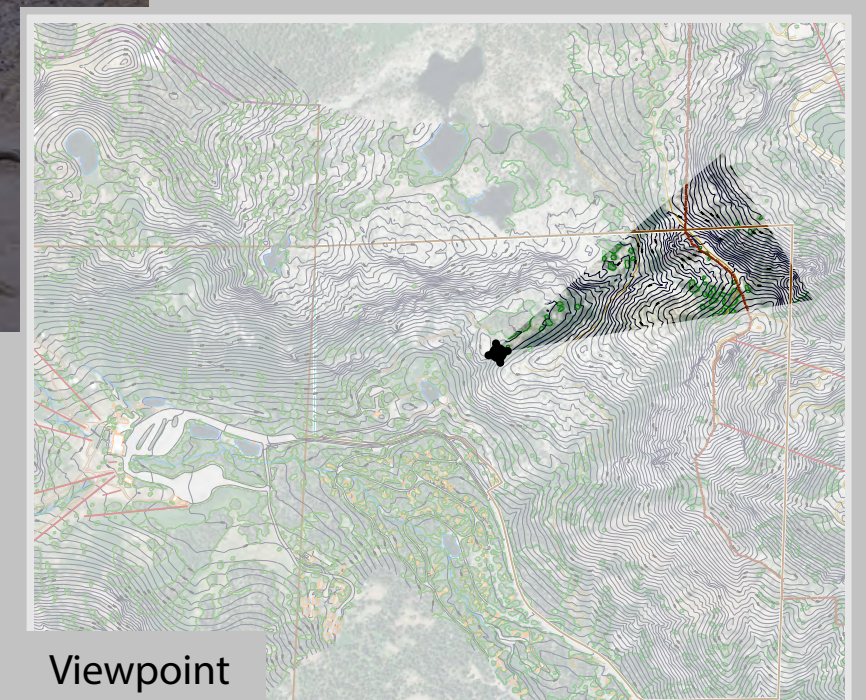
*Viewpoint elevation = 7,300'*

*Photograph taken by Grant Kaye using a Canon EOS 5D Mark III camera on  
06/30/2015 at 8:28 am, with a 42mm focal length to emulate the human eye.*

Prepared By:



September 2018



Viewpoint





Alternative 2

#### *Viewpoint Details*

*Viewpoint elevation = 7,300'*

*Photograph taken by Grant Kaye using a Canon EOS 5D Mark III camera on 06/30/2015 at 8:28 am, with a 42mm focal length to emulate the human eye.*

Prepared By:

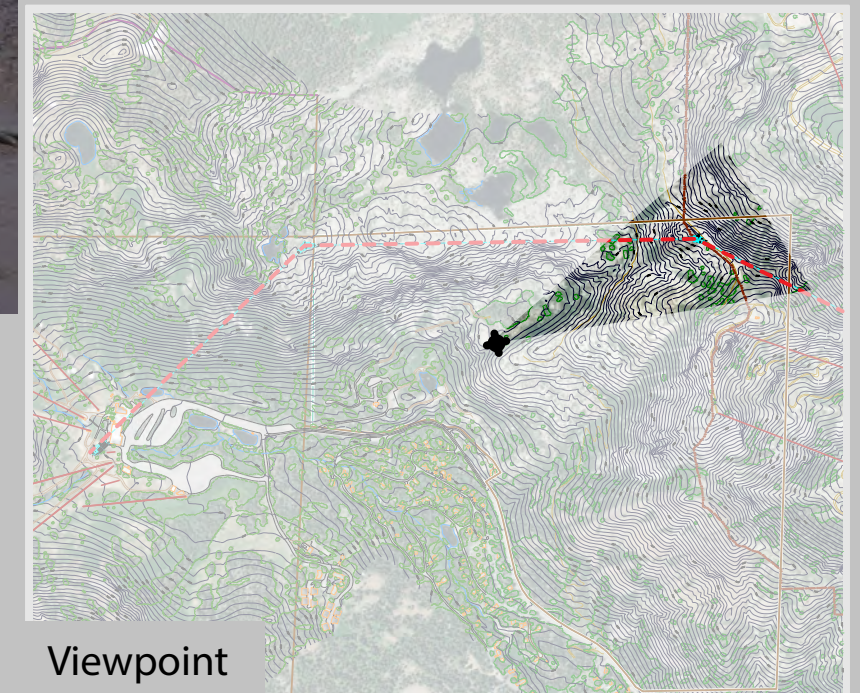


September 2018



## **VIEW 9 FIVE LAKES TRAIL SWITCHBACK 1 ALTERNATIVE 2**

**SIMULATED CONDITIONS**  
B2B GONDOLA EIS      FIGURE D-9b



Viewpoint





Alternative 3

*Viewpoint Details*

*Viewpoint elevation = 7,300'*

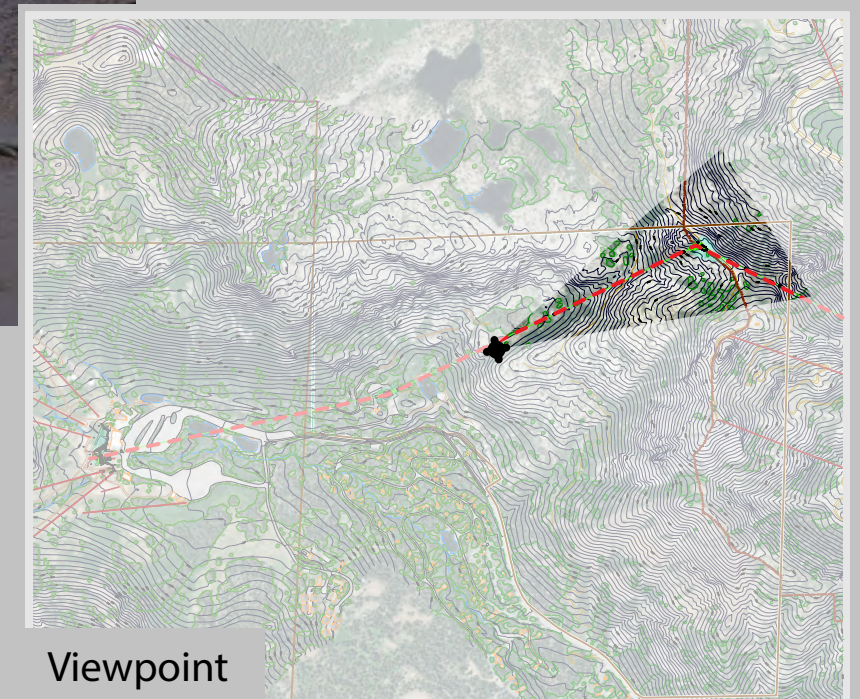
*Photograph taken by Grant Kaye using a Canon EOS 5D Mark III camera on 06/30/2015 at 8:28 am, with a 42mm focal length to emulate the human eye.*

Prepared By:



September 2018

**VIEW 9**  
**FIVE LAKES TRAIL**  
**SWITCHBACK 1**  
**ALTERNATIVE 3**  
**SIMULATED CONDITIONS**  
B2B GONDOLA EIS      FIGURE D-9c



Viewpoint





Alternative 4

Viewpoint Details

Viewpoint elevation = 7,300'

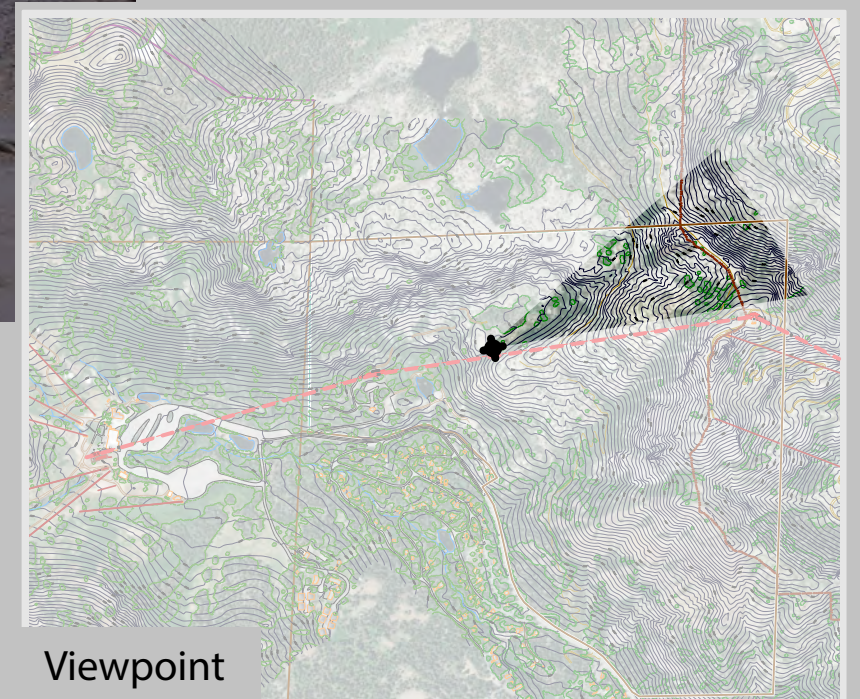
Photograph taken by Grant Kaye using a Canon EOS 5D Mark III camera on 06/30/2015 at 8:28 am, with a 42mm focal length to emulate the human eye.

Prepared By:



September 2018

**VIEW 9**  
**FIVE LAKES TRAIL**  
**SWITCHBACK 1**  
**ALTERNATIVE 4**  
**SIMULATED CONDITIONS**  
B2B GONDOLA EIS      FIGURE D-9d



Viewpoint



## **Photo Location #10**





Existing Conditions

*Viewpoint Details*

*Viewpoint elevation = 7,261'*

*Photograph taken by Grant Kaye using a Canon EOS 5D Mark III camera on 06/30/2015 at 8:05 am, with a 42mm focal length to emulate the human eye.*

Prepared By:

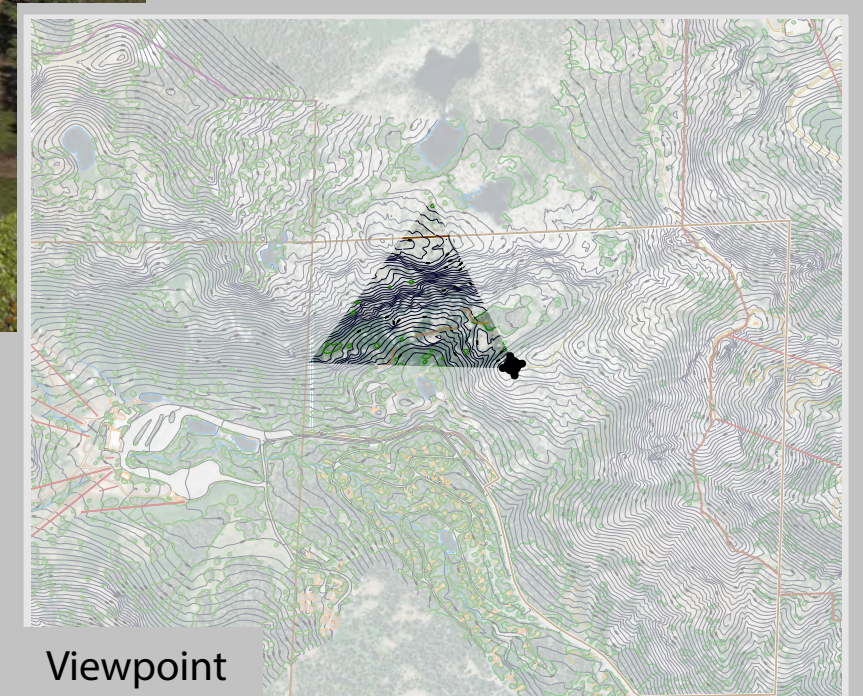


September 2018

**VIEW 10**  
**FIVE LAKES TRAIL**  
**SWITCHBACK 2**  
**EXISTING CONDITIONS**

B2B GONDOLA EIS

FIGURE D-10a



Viewpoint





Alternative 2

Viewpoint Details

Viewpoint elevation = 7,261'

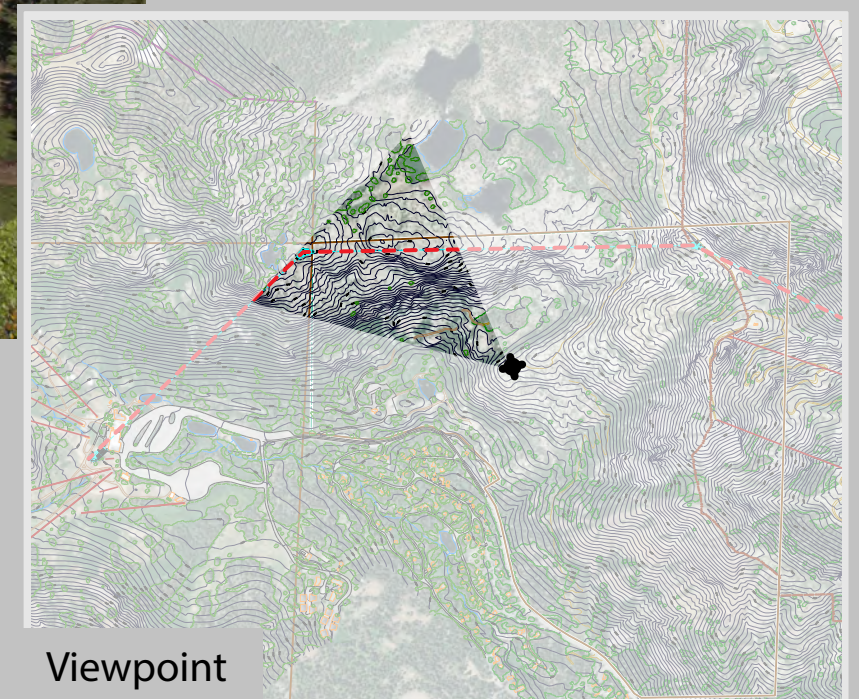
Photograph taken by Grant Kaye using a Canon EOS 5D Mark III camera on 06/30/2015 at 8:05 am, with a 42mm focal length to emulate the human eye.

Prepared By:



September 2018

**VIEW 10**  
**FIVE LAKES TRAIL**  
**SWITCHBACK 2**  
**ALTERNATIVE 2**  
**SIMULATED CONDITIONS**  
B2B GONDOLA EIS      FIGURE D-10b



Viewpoint





Alternative 3

*Viewpoint Details*

*Viewpoint elevation = 7,261'*

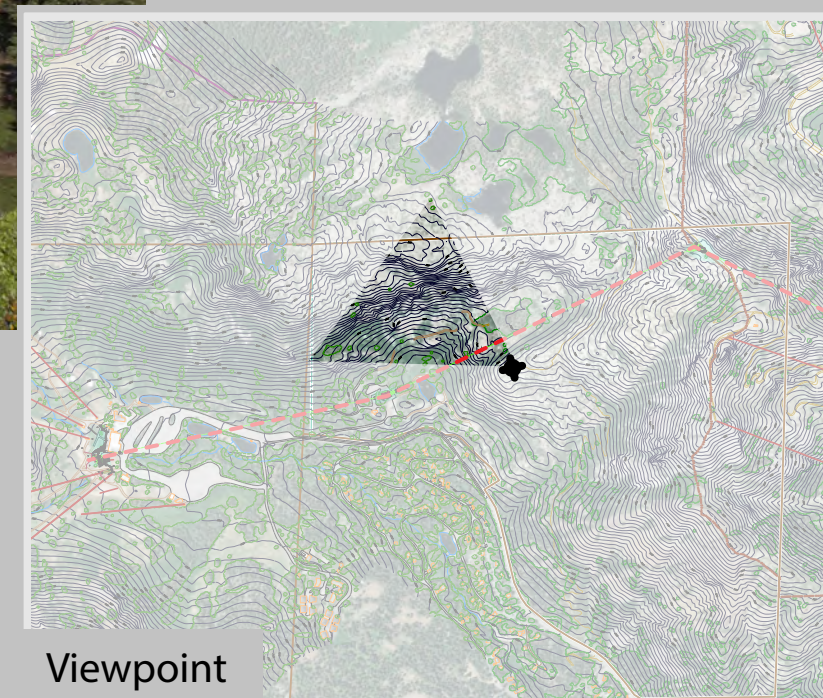
*Photograph taken by Grant Kaye using a Canon EOS 5D Mark III camera on 06/30/2015 at 8:05 am, with a 42mm focal length to emulate the human eye.*

Prepared By:



September 2018

**VIEW 10**  
**FIVE LAKES TRAIL**  
**SWITCHBACK 2**  
**ALTERNATIVE 3**  
**SIMULATED CONDITIONS**  
B2B GONDOLA EIS      FIGURE D-10c



Viewpoint





Alternative 4

*Viewpoint Details*

*Viewpoint elevation = 7,261'*

*Photograph taken by Grant Kaye using a Canon EOS 5D Mark III camera on 06/30/2015 at 8:05 am, with a 42mm focal length to emulate the human eye.*

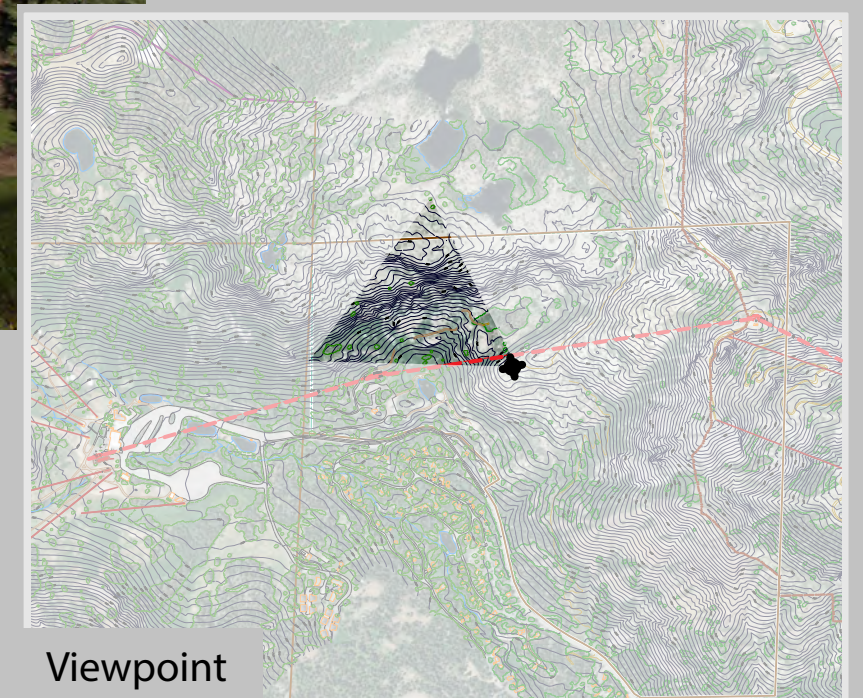
Prepared By:



September 2018



**VIEW 10**  
**FIVE LAKES TRAIL**  
**SWITCHBACK 2**  
**ALTERNATIVE 4**  
**SIMULATED CONDITIONS**  
 B2B GONDOLA EIS      FIGURE D-10d



Viewpoint